



GEMINI G.E.L. ^{AT} JONI MOISANT WEYL

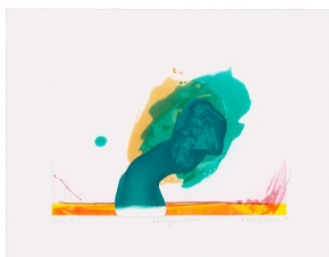
In the Project Space:

RICHARD TUTTLE



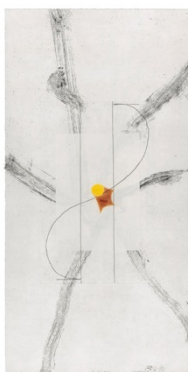
Nature-Media/V 2014
2-color etching
20 x 18" (50.8 x 45.7 cm)
Edition of 35, #17
RT13-3530

\$ 2,500
frame 385



"For John Altoon" 2011
4-color etching with collage and unique pencil hand-drawing
by the artist
17 x 22" (43.2 x 55.9 cm)
Edition of 35, #22
RT11-3512

3,800
frame 480



Blossom 2017
4-color etching with chine collé and red pen addition
by the artist
22 x 11" (55.9 x 27.9 cm)
Edition of 30, #14
RT15-3553

2,500
frame 480



Yellow Circle 2018
Ceramic tile and vapor-coated polished steel
19 x 24 x 18" (48.3 x 61 x 45.7 cm)
Edition of 7, #6
RT17-2236

14,000



GEMINI G.E.L. ^{AT} JONI MOISANT WEYL

In the Project Space:

RICHARD TUTTLE



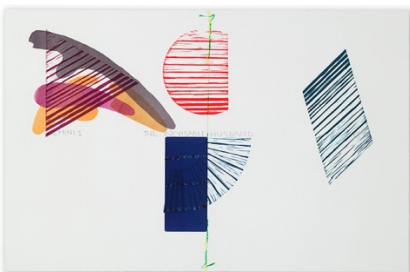
Tile, VI (nine inches), 2011
Durango low-fire clay with black slip, Nichrome wire and
painted white wooden frame
13 5/8 x 13 3/4 x 3" (34.6 x 34.9 x 7.6 cm)
A series of 11 unique works, #6
RT11-2226

Price on request



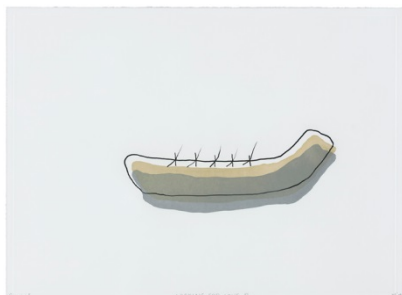
The Inevitable Husband, C, 2015
7-color linocut, pencil hand-drawing, title and signature elements
applied by the artist
26 x 38" (66 x 96.5 cm)
Edition of 30. #24
RT14-231

4,500
frame 750



The Inevitable Husband, B, 2015
10-color linocut with embossing, hand-drawn title and signature
elements applied by the artist
24 1/4 x 37 1/2" (61.6 x 95.3 cm)
Edition of 30, #24
RT14-230

4,500
frame 750



Looking for Love III, 2015
3-color aquatint
each 22 x 30 1/8" (55.9 x 76.5 cm)
Editions of 28, #13
RT14-3538

2,800
frame 580