



GEMINI G.E.L. ^{AT} JONI MOISANT WEYL

Photographic Impressions

May 9 – August 31, 2018

East Gallery – Print Room



ANN HAMILTON

face...susan 2003

1-color photo-gravure, signed and numbered on verso

29 1/2 x 42" (74.9 x 106.7 cm)

Edition of 20, #11

AH03-3357



ANN HAMILTON

face...bobby 2003

1-color photo-gravure, signed and numbered on verso

29 1/2 x 42" (74.9 x 106.7 cm)

Edition of 20, #11

AH03-3350

West Gallery



ANN HAMILTON

Peregrine Falcon (Sepia) 2017

Four panel, 11-color screenprint

63 3/4 x 48" (161.9 x 121.9 cm)

Edition of 12, #10

AH15-5392A



GEMINI G.E.L. ^{AT} JONI MOISANT WEYL

Photographic Impressions

May 9 – August 31, 2018



ANN HAMILTON

Pigeon Guillemot 2017

Four panel, 6-color screenprint

63 3/4" x 48" (161.9 x 121.9 cm)

Edition of 12, #10

AH15-5393



ANN HAMILTON

visite vi 2009

Lithographic chine-colle on screenprint, with collaged fabric

55 x 29 1/2" (139.7 x 74.9 cm)

Edition of 25, #14

AH09-4005



JOHN BALDESSARI

Hands & Feet: Hands, Baseball & Glove 2017

8-color screenprint

24 x 32 3/4" (61 x 83.2 cm)

Edition of 50, #21

JBA16-5397



GEMINI G.E.L. ^{AT} JONI MOISANT WEYL

Photographic Impressions

May 9 – August 31, 2018



JOHN BALDESSARI

Hands & Feet: Hands & Purse 2017

7-color screenprint

36 x 26 1/4 " (91.4 x 66.7 cm)

Edition of 50, #21

JBA16-5401



JOHN BALDESSARI

Hands & Feet: Hands, Tiger & Teeth 2017

7-color screenprint

30 x 26 " (76.2 x 66 cm)

Edition of 50, #21

JBA16-5395



BRUCE NAUMAN

Cockeye Lips (from Infrared Outtakes) 2006

Photographed by Jack Fulton (1968)

Epson UltraChrome K3 inkjet print

19 x 28" (48.3 x 71.1 cm)

Edition of 60, #19

BN06-9006



BRUCE NAUMAN

Neck Pull (from Infrared Outtakes) 2006

Photographed by Jack Fulton (1968)

Epson UltraChrome K3 inkjet print

19 x 28" (48.3 x 71.1 cm)

Edition of 60, #19

BN06-9007



GEMINI G.E.L. ^{AI} JONI MOISANT WEYL

Photographic Impressions

May 9 – August 31, 2018



BRUCE NAUMAN

Hands Only (from Infrared Outtakes) 2006

Photographed by Jack Fulton (1968)

Epson UltraChrome K3 inkjet print

19 x 28" (48.3 x 71.1 cm)

Edition of 60, #19

BN06-9008



BRUCE NAUMAN

Opened Eye (from Infrared Outtakes) 2006

Photographed by Jack Fulton (1968)

Epson UltraChrome K3 inkjet print

19 x 28" (48.3 x 71.1 cm)

Edition of 60, #19

BN06-9009



ROBERT RAUSCHENBERG & DARRYL POTTORF

Quattro Mani / Marrakech III 2000

18-color screenprint

36 x 36" (91.4 x 91.4 cm)

Edition of 50, #30

DP/RR99-5271



GEMINI G.E.L. ^{AT} JONI MOISANT WEYL

Photographic Impressions

May 9 – August 31, 2018



ROBERT RAUSCHENBERG

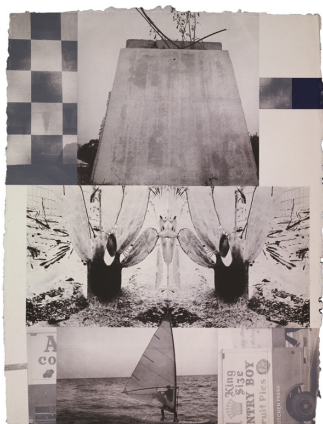
Fence 1991

4-color lithograph

44 1/2 x 30 1/4" (113 x 76.8 cm)

Edition of 57, #29

RR91-1283



ROBERT RAUSCHENBERG

Rookery Mounds – Crystal 1979

3-color lithograph

41 x 31" (104.1 x 78.7 cm)

Edition of 55, #5

RR79-898

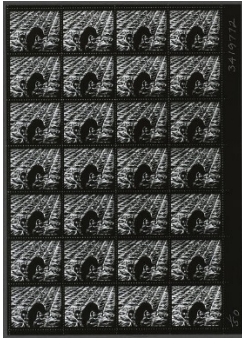


GEMINI G.E.L. ^{AT} JONI MOISANT WEYL

Photographic Impressions

May 9 – August 31, 2018

Project Space



JONATHAN BOROFSKY

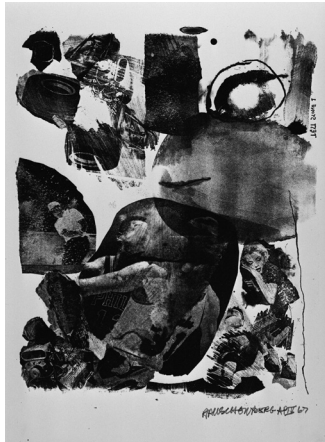
Berlin Dream Stamp (Negative Version) 1991

Black & white photo print with perforations

13 x 9" (33 x 22.9 cm)

Edition of 50, #21

JB85-9005A



ROBERT RAUSCHENBERG

Test Stone #1 1967

1-color lithograph

18 x 14" (45.7 x 35.6 cm)

Edition of 77, #66

RR67-101



RICHARD SERRA

Still from 'Hand Catching Lead' 2009

2-color lithograph/screenprint

18 x 21" (45.7 x 53.3 cm)

Edition of 117 plus 34 AP, AP 20/34

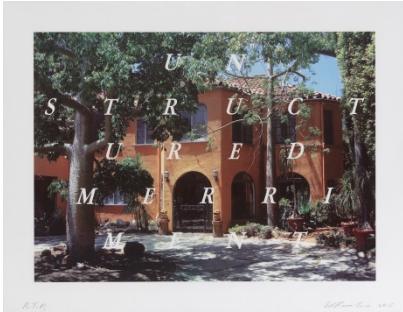
RS09-1595



GEMINI G.E.L. ^{AT} JONI MOISANT WEYL

Photographic Impressions

May 9 – August 31, 2018



ED RUSCHA

Unstructured Merriment 2016
19-color lithograph/screenprint
23 1/4 x 30" (59.1 x 76.2 cm)
Edition of 60, #39
ER15-1636



SOPHIE CALLE

Tapis de Fleurs 2014
Color inkjet print mounted on ragboard
with screenprinted text, framed
41 1/2 x 54 1/2 x 2" (105.4 x 138.4 x 5.1 cm)
Edition of 35, #17
SC14-2235A



DAVID HAMMONS

Obama Shrine - 16th Century-Obama, Japan 2012
4-color screenprint on paper and Mylar
9 x 11" (22.9 x 27.9 cm)
Edition of 150, #130
DHA12-5358