



GEMINI G.E.L. <sup>AT</sup> JONI MOISANT WEYL

**ROBERT RAUSCHENBERG: *SELECTED SERIES***

June 1 – September 30, 2017



PLANK



MARK



ARK



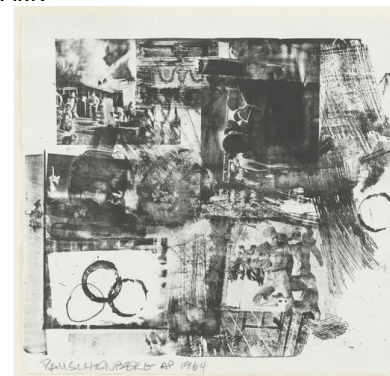
SINK



KAR



RANK



PRIZE

Series of seven 1-color lithographs, supplementary plates for the deluxe edition of *XXXIV DRAWINGS FOR DANTE'S INFERNO 1964*

Each 15 1/2 x 16" (39.37 cm x 40.64 cm)

Editions of 43

Published by Universal Arts Limited Edition



GEMINI G.E.L. <sup>AT</sup> JONI MOISANT WEYL

**ROBERT RAUSCHENBERG: *SELECTED SERIES***

June 1 – September 30, 2017



**STORYLINE I**  
21 1/2 x 17" (54.6 x 43.2 cm)  
Edition of 62, AP IX



**STORYLINE II**  
22 x 18" (55.9 x 45.7 cm)  
Edition of 59, #58



**STORYLINE III**  
21 1/2 x 17 1/2" (54.6 x 44.5 cm)  
Edition of 72, #71



**LOVE ZONE**  
27 x 23" (68.6 x 58.4 cm)  
Edition of 60, TP II



**FLOWER RE-RUN**  
23 1/2 x 18 1/2" (59.7 x 40 cm)  
Edition of 52, TP II



**STILL**  
30 x 22" (76.2 x 55.9 cm)  
Edition of 34, AP VI

**REELS (B+C), 1968**  
Series of six lithographs  
RR68-171-176



GEMINI G.E.L. <sup>AT</sup> JONI MOISANT WEYL

**ROBERT RAUSCHENBERG: *SELECTED SERIES***

June 1 – September 30, 2017



**BOREALIS SHARES II** 1990  
Screenprinted brass/handpainted patinas by artist  
75" x 40 3/4" x 23" (190.5 x 103.5 x 58.4 cm)  
26 unique works  
RR90-173 (#15)



**BELLINI #4** 1988  
Intaglio in 7 colors on Arches paper  
60 x 38 1/2" (152.4 cm x 97.79 cm)  
ULAE seal embossed lower left corner  
Edition of 47, HC 1



GEMINI G.E.L. <sup>AT</sup> JONI MOISANT WEYL

**ROBERT RAUSCHENBERG: *SELECTED SERIES***

June 1 – September 30, 2017



TIDES 1969  
3-color lithograph  
42 x 30" (106.68 cm x 76.2 cm)  
Edition of 28, #4  
Published by Universal Arts Limited Edition



DRIFTS 1969  
3-color lithograph  
42 x 30" (106.68 cm x 76.2 cm)  
Edition of 35, #26  
Published by Universal Arts Limited Edition



GULF 1969  
3-color lithograph  
42 x 30" (106.68 cm x 76.2 cm)  
Edition of 31, #24  
Published by Universal Arts Limited Edition



GEMINI G.E.L. <sup>AT</sup> JONI MOISANT WEYL

**ROBERT RAUSCHENBERG: *SELECTED SERIES***

June 1 – September 30, 2017



CARDBIRD IV

39 1/4 in. x 39 in. (99.7 x 99.1 cm)



CARDBIRD II

54 in. x 33 in. (137.2 x 83.8 cm)



CARDBIRD I

45 in. x 30 in. (114.3 x 76.2 cm)



CARDBIRD III

36 in. x 36 in. (91.4 x 91.4 cm)



CARDBIRD VII

33 in. x 33 1/4 in. (83.8 x 84.5 cm)

**CARDBIRD SERIES 1971**

Collage print with corrugated cardboard, tape,  
photo-offset lithograph, and screenprint

Editions of 75

Gemini ID No. RR71-2016-2022



GEMINI G.E.L. <sup>AT</sup> JONI MOISANT WEYL

**ROBERT RAUSCHENBERG: *SELECTED SERIES***

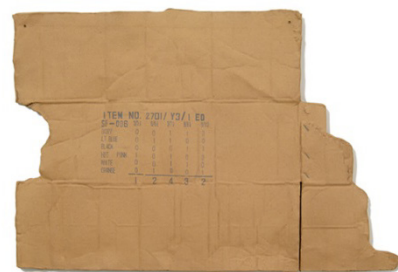
June 1 – September 30, 2017



TAMPA CLAY PIECE 4  
9 1/2 × 17 × 1 1/2"  
(22.9 × 43.2 × 2.5 cm)



TAMPA CLAY PIECE 1  
14 1/2 × 15 1/2 × 3/4"  
(35.6 × 38.1 × 1.9 cm)



TAMPA CLAY PIECE 2  
15 1/2 × 23 1/2 × 3/4"  
(38.1 × 58.4 cm x 1.9 cm)



TAMPA CLAY PIECE 3  
19 1/2 × 24 × 5 1/2"  
(49.5 × 61 × 14 cm)

**TAMPA CLAY PIECES, 1972-73**

Fired clay with screenprinted decal and soil patina

Editions of 20 (10 Roman numerals, 10 Arabic numerals)

Published by Graphicstudio, USF



GEMINI G.E.L. <sup>AT</sup> JONI MOISANT WEYL

**ROBERT RAUSCHENBERG: *SELECTED SERIES***

June 1 – September 30, 2017



On view in the Main Gallery:

SHADOW (TRACKS) 1976

Clay, dirt, resin, and fiberglass with a wet soil patina

29 x 36" (73.7 x 91.4 cm)

Total castings: 18



Also available:

TEST STONE #3 1967

2-color lithograph

23 x 31" (58.4 x 78.7 cm)

Edition of 71

RR67-103



GEMINI G.E.L. <sup>AT</sup> JONI MOISANT WEYL

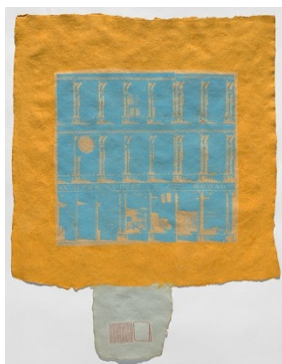
IN THE PROJECT SPACE:

**ROBERT RAUSCHENBERG: *SELECTED WORKS FROM THE 60s & 70s***

June 1 – September 30, 2017



PAGES & FUSES, LINK 1974  
Handmade paper, pigment and screenprinted tissue  
laminated to paper pulp  
25 x 20" (63.5 x 50.8 cm)  
Edition of 29, CTP 2  
RR73-636



PAGES & FUSES, HIND 1974  
Handmade paper, pigment and screenprinted tissue  
laminated to paper pulp  
26 x 20" (66.0 x 50.8 cm)  
Edition of 34, #15  
RR73-637



TAMPA CLAY PIECE 5 1974  
Clay slip and fiberglass bag with collage and soil patina  
34 x 18 x 3" (86.4 x 45.7 x 7.6 cm)  
Edition of 20 (10 Roman numerals, 10 Arabic numerals)  
Published by Graphicstudio





GEMINI G.E.L. <sup>AT</sup> JONI MOISANT WEYL

IN THE PROJECT SPACE:  
**ROBERT RAUSCHENBERG: *SELECTED WORKS FROM THE 60s & 70s***

June 1 – September 30, 2017



TEST STONE #1 1967  
1-color lithograph  
18 x 14" (45.7 x 35.6 cm)  
Edition of 77, #66  
RR67-101



GUARDIAN 1968  
3-color lithograph  
42 x 30" (106.68 cm x 76.2 cm)  
Edition of 44, #3  
Published by Universal Limited Arts Edition



LANDMARK 1968  
2-color lithograph  
42 x 30" (106.68 cm x 76.2 cm)  
Edition of 40, Trial Proof  
Published by Universal Limited Arts Edition



---

GEMINI G.E.L. <sup>AT</sup> JONI MOISANT WEYL

IN THE PROJECT SPACE:  
**ROBERT RAUSCHENBERG: *SELECTED WORKS FROM THE 60s & 70s***

June 1 – September 30, 2017



WATER STOP 1968

5-color lithograph

54 x 32" (137.16 cm x 81.28 cm)

Edition of 28, PP 3

Published by Universal Limited Arts Edition