



GEMINI G.E.L. ^{AT} JONI MOISANT WEYL

ROCK PAPER NATURE

January 8-March 16, 2019



SOPHIE CALLE

TAPIS DE FLEURS 2014

Color inkjet print mounted on ragboard with
screenprinted text, framed

41 1/2 x 54 1/2 x 2" (105.4 x 138.4 x 5.1 cm)

Edition of 35, #17

SC14-2235A



ANN HAMILTON

KAKAPO GROUND PARROT (SEPIA) 2017

7-color screenprint

35 1/2 x 25" (90.2 x 63.5 cm)

Edition of 25, #20

AH15-5391A



VIJA CELMINS

NIGHT SKY 2 (REVERSED) 2002

3-color photogravure/aquatint/ photo-
etching/drypoint

20 3/4 x 24 1/2" (52.7 x 62.2 cm)

Edition of 65, #27

VC02-3336



VIJA CELMINS

UNTITLED (WEB 3) 2002

1-color aquatint/drypoint

21 x 24 1/2" (53.3 x 62.2 cm)

Edition of 65, #20

VC02-3332



GEMINI G.E.L. ^{AI} JONI MOISANT WEYL

ROCK PAPER NATURE

January 8-March 16, 2019



ROBERT GOBER

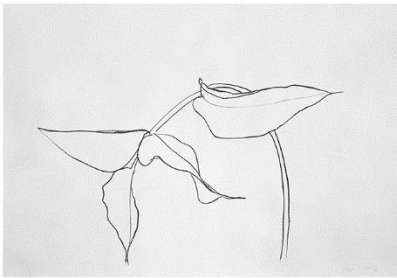
UNTITLED 2002

4-color lithograph

51 x 36" (129.5 x 91.4 cm)

Edition of 65, #57

ROGO01-1485



ELLSWORTH KELLY

PHILODENDRON I 1984

1-color lithograph

25 x 36" (63.5 x 91.4 cm)

Edition of 30, AP 7

EK83-1088



ELLSWORTH KELLY

SUNFLOWER II 2004

1-color lithograph

37 x 29" (94 x 73.7 cm)

Edition of 60, #26

EK95-1399



ELLSWORTH KELLY

LEAF VII 1978

1-color lithograph

30 x 42" (76.2 x 106.7 cm)

Edition of 20, #12

EK78-869



GEMINI G.E.L. ^{AT} JONI MOISANT WEYL

ROCK PAPER NATURE

January 8-March 16, 2019

ANN HAMILTON

PIGEON GUILLEMOT 2017

4-panel, 28-color screenprint

overall 63 3/4 x 48" (161.9 x 121.9 cm)

Edition of 12, #10

AH15-5393



JOHN BALDESSARI

HANDS & FEET: HANDS, TIGER & TEETH 2017

7-color screenprint

30 x 26" (76.2 x 66 cm)

Edition of 50, #21

JBA16-5395



JOHN BALDESSARI

HANDS & FEET: HANDS & FISH 2017

7-color screenprint

36 x 17" (91.4 x 43.2 cm)

Edition of 50, #21

JBA16-5398



GEMINI G.E.L. ^{AT} JONI MOISANT WEYL

ROCK PAPER NATURE

January 8-March 16, 2019



SUSAN ROTHENBERG

K 2004

1-color lithograph

13 x 17 3/4" (33 x 45.1 cm)

Edition of 250, #196

SR04-1513



TACITA DEAN

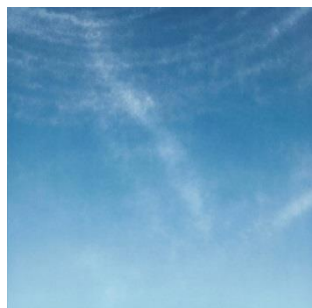
LA EXUBERANCE 13 2016

Hand-drawn 3-color blend lithograph

29 7/8 x 29 7/8" (75.9 x 75.9 cm)

Edition of 36, #14

TD15-1654



TACITA DEAN

LA EXUBERANCE 14 2016

Hand-drawn 3-color blend lithograph

29 7/8 x 29 7/8" (75.9 x 75.9 cm)

Edition of 36, #14

TD15-1655



JOHN BALDESSARI

JUMP (WITH VOLCANO) 1994

9-color lithograph/screenprint

48 x 24" (121.9 x 61 cm)

Edition of 56, #16

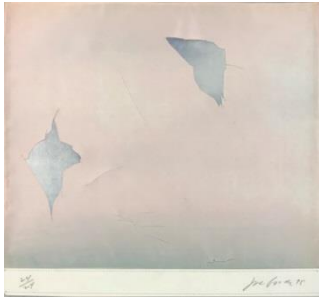
JBA91-1267



GEMINI G.E.L. ^{AT} JONI MOISANT WEYL

ROCK PAPER NATURE

January 8-March 16, 2019



JOE GOODE

UNTITLED 1975

3-color screenprint on fabric, double layered,
water sprayed and sewn together

Uniquely cut and torn by the artist

20 1/2 x 24" (52.1 x 61.0 cm)

24 unique works, #24

JG75-5140



RICHARD SERRA

VIDEY AFANGAR #6 1991

1-color etching

10 1/2 x 12" (26.7 x 30.5 cm)

Edition of 75, #55

RS90-3162



RICHARD SERRA

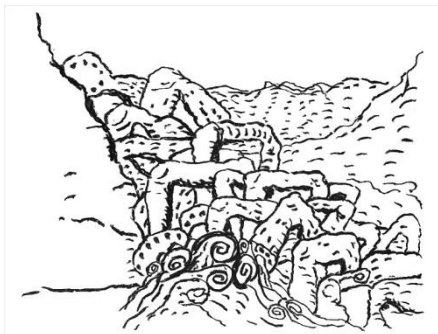
ICELAND 1991

1-color intaglio construction

35 1/4 x 55 1/2" (89.5 x 141 cm)

Edition of 46, #28

RS90-3174



PHILIP GUSTON

SEA GROUP 1983

1-color lithograph

32 x 42 1/2" (81.3 x 108 cm)

Edition of 50, #38

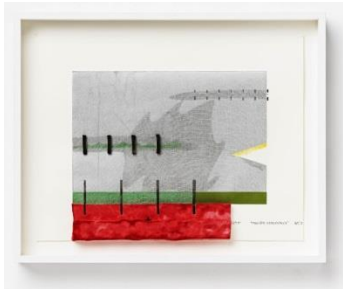
PG79-917



GEMINI G.E.L. ^{AT} JONI MOISANT WEYL

ROCK PAPER NATURE

January 8-March 16, 2019



RICHARD TUTTLE

"PACIFIC SERIOUSLY" 2012

6-color spit bite, aquatint, chine colle and paper pulp construction, each with unique hand-drawing by the artist
framed 20 1/4 x 25 1/4 x 3" (51.4 x 64.1 x 7.6 cm)

Edition of 38, #24

RT11-224



RICHARD TUTTLE

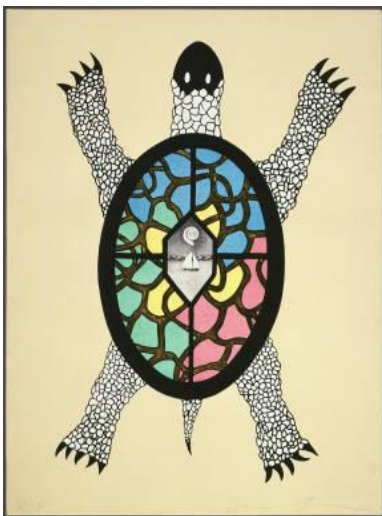
PLANT GROWTH 2012

Ceramic earthenware

12 1/2 x 16 x 16" (31.8 x 40.6 x 40.6 cm)

Edition of 12, #6

RT12-228



JONATHAN BOROFSKY

TURTLE 1991

9-color lithograph/3-color screenprint with hand-applied gold-leafing

59 x 44" (149.9 x 111.8 cm)

Edition of 35, #14

JB90-1237



GEMINI G.E.L. ^{AT} JONI MOISANT WEYL

ROCK PAPER NATURE

January 8-March 16, 2019



ROBERT RAUSCHENBERG

GULF 1969

3-color lithograph

42 x 30" (106.68 cm x 76.2 cm)

Edition of 31, #24

Published by Universal Arts Limited Edition



ROBERT RAUSCHENBERG

TIDES 1969

3-color lithograph

42 x 30" (106.68 cm x 76.2 cm)

Edition of 28, #4

Published by Universal Arts Limited Edition



ROBERT RAUSCHENBERG

DRIFTS 1969

3-color lithograph

42 x 30" (106.68 cm x 76.2 cm)

Edition of 35, #26

Published by Universal Arts Limited Edition



GEMINI G.E.L. ^{AT} JONI MOISANT WEYL

ROCK PAPER NATURE

January 8-March 16, 2019



TERRY WINTERS

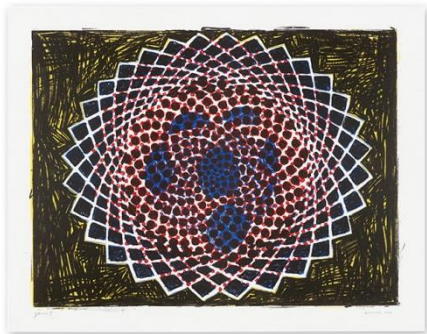
CLOCKS AND CLOUDS/1 2013

4-color lithograph

36 x 46" (91.4 x 116.8 cm)

Edition of 35, #17

TW13-1626



TERRY WINTERS

CLOCKS AND CLOUDS/2 2013

6-color lithograph

36 x 46" (91.4 x 116.8 cm)

Edition of 35, #17

TW12-1623



MALCOLM MORLEY

RITE OF PASSAGE 1989

19-color etching

46 1/2 x 32 1/2" (118.1 x 82.6 cm)

Edition of 52, #36

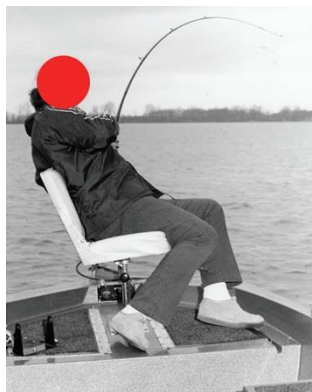
MM88-3148



GEMINI G.E.L. ^{AT} JONI MOISANT WEYL

ROCK PAPER NATURE

January 8-March 16, 2019



JOHN BALDESSARI

BIG CATCH 2016

8-color screenprint

32 x 25 1/4" (81.3 x 64.1 cm)

Edition of 65, #24

JBA16-5394



FRANZ WEST

HONEYMOON 2012

Papier-mache, with wire mesh

approx. diameter 39 x 3/4" (99.1 x 1.9 cm)

Edition of 30, #15

FW11-225

Please ask to view:



WILLIAM CRUTCHFIELD

TAWNY OWL STATE I 1968

2-color lithograph and watercolor applied by the artist

20 x 14" (50.8 x 35.6 cm)

Edition of 75, PPII

WC67-1185