

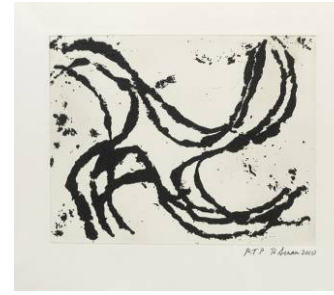


GEMINI G.E.L. ^{AT} JONI MOISANT WEYL

Richard Serra
Junction #1-13 2010
1-color etching
16 x 18" (40.6 x 45.7 cm)
Edition of 50
RS10-3485-3497



Junction #1 (RS10-3485)



Junction #2 (RS10-3486)



Junction #3 (RS10-3487)



Junction #4 (RS10-3488)



Junction #5 (RS10-3489)



Junction #6 (RS10-3490)



Junction #7 (RS10-3491)



Junction #8 (RS10-3492)



Junction #9 (RS10-3493)



Junction #10 (RS10-3494)



Junction #11 (RS10-3495)



Junction #12 (RS10-3496)



Junction #13 (RS10-3497)



GEMINI G.E.L. ^{AT} JONI MOISANT WEYL

Enjoying a collaboration that spans almost four decades, Richard Serra has been creating prints almost exclusively at the Los Angeles based artists' workshop Gemini G.E.L. In 2010, Serra completed a series of 13 etchings titled *Junction*, exploring what can loosely be described as an "x" shape. With edition sizes of 50, these small-scale prints (16 x 18 inches each) took a dramatic turn away from the large-scale and ink-heavy series *Weights and Levels*, published earlier in the same year. *Junction* is also a departure from Serra's larger body of work, presenting a surprisingly playful and expressive spirit that is typically absent not only in his printmaking but in his drawing and sculptural works as well. Using molten Paintstik, Serra's signature medium of choice, he drew each of the thirteen images directly onto a mylar sheet. That image was then transferred onto an etching plate, which delivered the rich, saturated and highly textured surface onto creamy, beige-colored paper.

Richard Serra was born November 2, 1939, in San Francisco. Best known for his large-scale sculptural work, Serra's prints offer another way to view his 3-dimensional work – an angle that may have been unanticipated, an unforeseen effect. Viewed alone, Serra's prints are highly sophisticated, bold and elegant images; viewed armed with knowledge of Serra's sculptural projects, they take on new life, with each medium informing the other. Serra was honored with solo exhibitions at the Kunsthalle Tübingen, Germany, in 1978; the Musée National d'Art Moderne, Paris, in 1984; the Museum Haus Lange, Krefeld, Germany, in 1985; and the Museum of Modern Art, New York, in 1986. The 1990s saw further honors for Serra's work: a retrospective of his drawings at the Bonnefantenmuseum, Maastricht; the Wilhelm Lehmbruck prize for sculpture in Duisburg in 1991; and the following year, a retrospective at Museo Nacional Centro de Arte Reina Sofía, Madrid. In 1997–98, his *Torqued Ellipses* (1997) were exhibited at MoCA Los Angeles and the Dia Center for the Arts, New York. Since 2000, Serra has created major installations of his sculpture internationally, including *The Matter of Time* at the Guggenheim Museum Bilbao, Spain – an installation of record-breaking size and duration – and *Promenade* at the Grand Palais in Paris (2008). In 2007, the Museum of Modern Art in New York presented a Serra career retrospective, which was the museum's largest-ever sculpture exhibition to date, and in 2011, the first retrospective of his drawings opened at the Metropolitan Museum of Art.