



**GEMINI G.E.L. <sup>AI</sup> JONI MOISANT WEYL**

**GEMINI G.E.L. <sup>AI</sup> JONI MOISANT WEYL**

535 West 24<sup>th</sup> Street, 3<sup>rd</sup> Floor, New York, NY 10011  
(212) 249-3324 Telephone  
(323) 791-2525 <<< during print fair only  
gemini@joniweyl.com www.joniweyl.com  
www.nga.gov/gemini – online catalogue raisonné

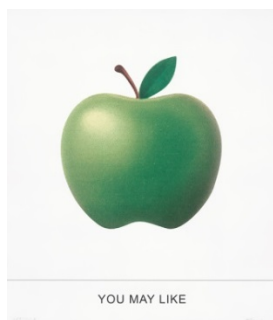
*International Fine Print Dealers Association*  
**Fine Art Print Fair 2018**  
October 24 – October 28, 2018

**JOHN BALDESSARI**



WHISKEY IN THE JAR 2018  
Multi-color screenprint  
33 x 28" (83.8 x 71.1 cm)  
Edition of 50  
JBA17-5407

\$ 5,000  
frame 650



ADAM WASN'T INTO IT 2018  
Multi-color screenprint  
33 x 28" (83.8 x 71.1 cm)  
Edition of 50, #26  
JBA17-5408

5,000  
frame 650



TRIAD 2018  
Multi-color screenprint  
34 1/2 x 28" (87.6 x 71.1 cm)  
Edition of 50, #26  
JBA17-5409

5,000  
frame 650



GEMINI G.E.L. <sup>AT</sup> JONI MOISANT WEYL

**JOHN BALDESSARI—continued**



BOSS 2018  
Multi-color screenprint  
31 x 28" (83.8 x 71.1 cm)  
Edition of 50  
JBA17-5410

\$ 5,000  
*frame 650*



YOGURT 2018  
Multi-color screenprint  
33 1/4 x 28" (84.5 x 71.1 cm)  
Edition of 50, #26  
JBA17-5411

5,000  
*frame 650*



BEST MEN 2018  
Multi-color screenprint  
33 x 28" (83.8 x 71.1 cm)  
Edition of 50, #26  
JBA17-5412

5,000  
*frame 650*



TRUFFLE BUTTER 2018  
Multi-color screenprint  
32 1/2 x 28" (82.6 x 71.1 cm)  
Edition of 50, #26  
JBA17-5413

5,000  
*frame 650*



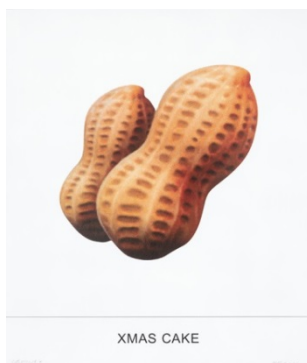
GEMINI G.E.L. <sup>AI</sup> JONI MOISANT WEYL

**JOHN BALDESSARI—continued**



AND ONE SARDINE 2018  
Multi-color screenprint  
35 1/2 x 28" (83.8 x 71.1 cm)  
Edition of 50  
JBA17-5414

\$ 5,000  
*frame 650*



I HAVE AN ELEPHANT 2018  
Multi-color screenprint  
33 x 28" (83.8 x 71.1 cm)  
Edition of 50, #26  
JBA17-5415

5,000  
*frame 650*



HANDS & FEET: HANDS, GLOVES & PERSON 2017  
8-color screenprint  
26 1/4 x 36" (66.7 x 91.4 cm)  
Edition of 50  
JBA16-5400

4,500



HANDS & FEET: HANDS & PURSE 2017  
7-color screenprint  
36 x 26 1/4" (91.4 x 66.7 cm)  
Edition of 50  
JBA16-5401

5,000



GEMINI G.E.L. <sup>AT</sup> JONI MOISANT WEYL

**JOHN BALDESSARI—continued**



HANDS & FEET: KNEES 2017  
8-color screenprint  
32 x 30 3/4" (81.3 x 78.1 cm)  
Edition of 50  
JBA16-5402

\$ 5,000



KARL LAGERFELD 2015  
20-color screenprint  
40 x 30 5/8" (101.6 x 77.8 cm)  
Edition of 50  
JBA14-5379

13,500



NUMBERED LEGS 2015  
20-color screenprint  
21 x 43 1/2" (53.3 x 110.5 cm)  
Edition of 50  
JBA14-5380

25,000\*



FALL LINE 2015  
13-color screenprint  
48 x 19" (121.9 x 48.3 cm)  
Edition of 50  
JBA14-5378

20,000\*

\* Denotes limited availability



GEMINI G.E.L. <sup>AT</sup> JONI MOISANT WEYL

**JOHN BALDESSARI—continued**



THREE MEN LEAVING HOUSE  
(FLOWER PLANTERS NEAR DOOR)

THE NEWS: THREE MEN LEAVING HOUSE... 2014

\$ 6,500

18-color screenprint  
38 1/4 x 35 1/8" (97.2 x 89.2 cm)  
Edition of 50  
JBA13-5366



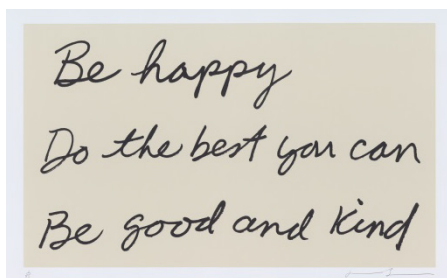
PERSON HOLDING UMBRELLA  
(HORIZONTALLY) IN SNOWSTORM

THE NEWS: PERSON HOLDING UMBRELLA... 2014

7,500

18-color screenprint  
31 x 35 1/4" (78.7 x 89.5 cm)  
Edition of 50  
JBA13-5367

**JONATHAN BOROFKY**



MY MOTHER'S WORDS 2010

10,000\*

2-color screenprint  
34 1/2 x 55" (87.6 x 139.7 cm)  
Edition of 45  
JB08-5318

**VIJA CELMINS**



NIGHT SKY 3 2002

22,000\*

1-color photogravure/aquatint/drypoint  
19 3/4 x 23 3/4" (50.2 x 60.3 cm)  
Edition of 65  
VC02-3337

\* Denotes limited availability



GEMINI G.E.L. <sup>AI</sup> JONI MOISANT WEYL

**VIJA CELMINS—continued**



UNTITLED (WEB 4) 2002  
1-color photogravure/aquatint/drypoint  
20 1/2 x 24 1/4" (52.1 x 61.6 cm)  
Edition of 65  
VC02-3335

\$ 14,000\*



UNTITLED (WEB 3) 2002  
1-color aquatint/drypoint  
21 x 24 1/2" (53.3 x 62.2 cm)  
Edition of 65  
VC02-3332

14,000\*



NIGHT SKY 2 (REVERSED) 2002  
3-color photogravure/aquatint/photo-etching/drypoint  
20 3/4 x 24 1/2" (52.7 x 62.2 cm)  
Edition of 65  
VC02-3336

7,000

**WILLIAM CRUTCHFIELD**



TAWNY OWL STATE I 1968  
2-color lithograph and watercolor applied by the artist  
20 x 14" (50.8 x 35.6 cm)  
Edition of 75, PPII  
WC67-1185

1,500

\* Denotes limited availability



GEMINI G.E.L. <sup>AT</sup> JONI MOISANT WEYL

TACITA DEAN



LA EXUBERANCE 13 2016  
Hand-drawn 3-color blend lithograph  
29 7/8 x 29 7/8" (75.9 x 75.9 cm)  
Edition of 36, #14  
TD15-1654

\$ 6,000  
*frame 850*



LA EXUBERANCE 2016  
Hand-drawn 3-color blend lithograph  
Each 29 7/8 x 29 7/8" (75.9 x 75.9 cm)  
Editions of 36  
TD15-1642-1656

6,000 each

Pictured, left to right:  
LA Exuberance 2, 6, 7, 11, 12, 14

DAN FLAVIN



(TO DON JUDD, COLORIST) 3 1987  
1-color lithograph  
29 1/2 x 40 1/4" (74.9 x 102.2 cm)  
Edition of 30, AP 6  
DF86-1131

24,000\*  
*framed*



(TO DON JUDD, COLORIST) 5 1987  
1-color lithograph  
29 x 40 3/4" (73.7 x 103.5 cm)  
Edition of 30, AP 6  
DF86-1133

24,000\*  
*framed*

\* Denotes limited availability



GEMINI G.E.L. <sup>AT</sup> JONI MOISANT WEYL

**FRANK GEHRY**



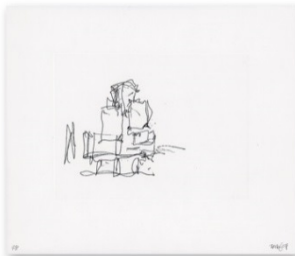
VUITTON/KOREA 2016  
1-color etching  
15 1/2 x 18" (39.4 x 45.7 cm)  
Edition of 35, #16  
FG16-3551

\$ 1,800  
*frame 275*



HOUSE STUDY 2 2016  
1-color etching  
37 1/4 x 17" (94.6 x 43.2 cm)  
Edition of 35  
FG16-3548

3,500



HOUSE STUDY DETAIL C 2016  
1-color etching  
15 1/2 x 18" (39.4 x 45.7 cm)  
Edition of 35  
FG16-3550

1,800



WALT DISNEY CONCERT HALL 2009  
1-color lithograph  
14 x 18" (35.6 x 45.7 cm)  
Edition of 35  
FG08-1589

2,800



SITONME 2008  
1-color lithograph  
12 x 14" (30.5 x 35.6 cm)  
Edition of 150  
FG07-1547

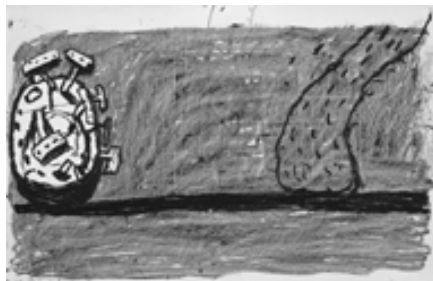
2,500





GEMINI G.E.L. <sup>AT</sup> JONI MOISANT WEYL

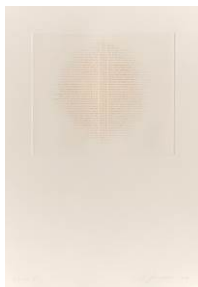
**PHILIP GUSTON**



SCENE 1981  
1-color lithograph  
20 x 29 3/4" (50.8 x 75.6 cm)  
Edition of 50, #40  
PG79-930

\$6,000  
frame 500

**ANN HAMILTON**



THE ANIMAL HAND 2017  
Blind embossment with hand-applied ink  
16 3/8 x 11 1/2" (41.6 x 29.2 cm)  
Edition of 35  
AH17-3558

1,800



THE EQUAL AND INALIENABLE RIGHTS OF ALL 2017  
Blind embossment with hand-applied ink  
34 1/4 x 21" (87 x 78.7 cm)  
Edition of 35  
AH17-3557

4,000



KAKAPO GROUND PARROT (SEPIA) 2017  
9-color screenprint  
35 1/2 x 25" (90.1 x 63.5 cm)  
Edition of 25  
AH15-5391A

2,500

Please ask to see additional work in this series



GEMINI G.E.L. <sup>AT</sup> JONI MOISANT WEYL

**ANN HAMILTON—continued**



BROWN GREATER GALAGO 2017  
10-color screenprint  
35 1/2 x 25" (90.1 x 63.5 cm)  
Edition of 25  
AH15-5390

\$ 2,500

Please ask to see additional work in this series



blue victory 2012  
Inkjet print, with fabric collage  
14 x 14" (35.6 x 35.6 cm)  
Edition of 150  
AH12-2231

2,000

**DAVID HOCKNEY**



GOING ROUND 1994  
22-color lithograph/screenprint, 4 panels  
overall 49 x 66" (124.5 x 167.6 cm)  
Edition of 48  
DH93-1363

Price on request

**JASPER JOHNS**



MAP 2012  
2-color lithograph  
14 x 11 1/2" (35.6 x 29.2 cm)  
Edition of 150  
JJ12-1612

10,000



GEMINI G.E.L. <sup>AT</sup> JONI MOISANT WEYL

**ELLSWORTH KELLY**



BLUE CURVE 2013  
1-color lithograph  
30 x 22" (76.2 x 55.9 cm)  
Editions of 50  
EK12-1617

\$ 12,000



RED CURVE 2013  
1-color lithograph  
30 x 22" (76.2 x 55.9 cm)  
Edition of 50  
EK12-1616

12,000



SMALL BLUE CURVE 2012  
1-color lithograph  
17 5/8 x 12 1/2" (44.8 x 31.75 cm)  
Edition of 100  
EK12-1615

6,000



SMALL RED CURVE 2012  
1-color lithograph  
17 5/8 x 12 1/2" (44.8 x 31.75 cm)  
Edition of 100  
EK12-1614

7,000



GREEN CURVES 2013  
1-color lithograph  
14 x 10" (35.6 x 25.4 cm)  
Edition of 150  
EK12-1610

7,500\*



RED CURVES 2013  
1-color lithograph  
14 x 10" (35.6 x 25.4 cm)  
Edition of 150  
EK12-1609

9,000\*

\* Denotes limited availability



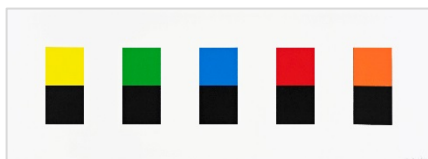
GEMINI G.E.L. <sup>AT</sup> JONI MOISANT WEYL

ELLSWORTH KELLY—continued



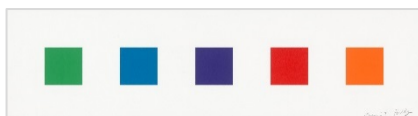
UNTITLED (FOR OBAMA) 2012  
1-color lithograph  
14 x 10" (35.6 x 25.4 cm)  
Edition of 150  
EK12-1608

\$ 5,000



COLOR OVER BLACK 2012  
6-color lithograph  
28 x 77" (71.1 x 195.6 cm)  
Edition of 35  
EK12-1607

45,000



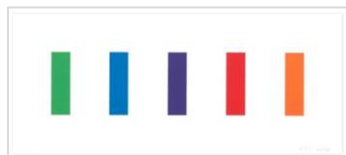
COLOR SQUARES 1 2011  
5-color lithograph  
21 x 77" (53.3 x 195.6 cm)  
Edition of 35  
EK11-1600

55,000\*



COLOR SQUARES 3 2011  
5-color lithograph  
5 1/4 x 13 1/4" (13.3 x 33.7 cm)  
Edition of 60  
EK11-1601

9,000\*



COLOR PANELS 2011  
5-color lithograph  
14 x 33" (35.6 x 83.8 cm)  
Edition of 45  
EK11-1603

10,000



DARTMOUTH 2011  
5-color lithograph  
14 x 28 1/2" (35.6 x 72.4 cm)  
Edition of 45  
EK11-1604

10,000



BLUE GRAY GREEN RED 2008  
4-color lithograph  
12 x 14" (30.5 x 35.6 cm)  
Edition of 150, SP 11  
EK08-1578

7,500  
frame 250

\* Denotes limited availability



GEMINI G.E.L. <sup>AT</sup> JONI MOISANT WEYL

ELLSWORTH KELLY—continued



RED CURVE 2006  
1-color lithograph  
12 x 6 3/4" (30.5 x 17.2 cm)  
Edition of 100  
EK05-1533

\$ 7,500



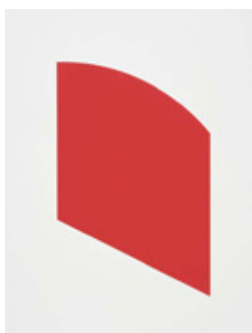
SUNFLOWER I 2004  
1-color lithograph  
37 x 29" (94 x 73.7 cm)  
Edition of 50  
EK95-1398

22,000\*



ORANGE 2004  
1-color lithograph  
16 x 12" (40.6 x 30.5 cm)  
Edition of 250  
EK04-1507

8,000\*



RED 2003  
1-color lithograph  
29 x 23 3/8" (73.6 x 59.4 cm)  
Edition of 45  
EK03-1501

14,000\*

\* Denotes limited availability



GEMINI G.E.L. <sup>AT</sup> JONI MOISANT WEYL

**ELLSWORTH KELLY—continued**



UNTITLED (GRAY) 1988  
2-color lithograph  
42 3/8 x 46 1/8" (107.6 x 117.2 cm)  
Edition of 18, AP 6  
EK87-1173

\$ 22,000\*  
*framed*



UNTITLED (PURPLE) 1988  
2-color lithograph  
51 x 46" (129.5 x 116.8 cm)  
Edition of 18, AP 6  
EK87-1171

36,000\*  
*framed*



UNTITLED (RED) 1988  
2-color lithograph  
44 3/4 x 40 3/4" (113.7 x 103.5 cm)  
Edition of 18, AP 6  
EK87-1170

36,000\*  
*framed*

**ROY LICHTENSTEIN**



YELLOW BRUSHSTROKE 1985  
2-color photo etching  
31 x 19 7/8" (78.7 x 50.5 cm)  
Edition of 40, AP 8  
RL84-3128

30,000\*

\* Denotes limited availability



GEMINI G.E.L. <sup>AT</sup> JONI MOISANT WEYL

MAN RAY



HANDS 1966  
2-color screenprint on Plexiglas  
27 x 21" (68.6 x 53.3 cm)  
Edition of 40, AP VIII  
MR66-1195

\$ 12,500\*  
framed

BRICE MARDEN



OBAMA LETTER 2012  
1-color photogravure/etching  
14 x 14" (35.6 x 35.6 cm)  
Edition of 150  
BM12-3521

3,800



ETCHING FOR OBAMA 2008  
1-color etching  
14 x 12" (35.5 x 30.4 cm)  
Edition of 150  
BM08-3444

3,000



GREYER MUSES 2001  
2-color etching/1-color lithograph  
22 x 30" (55.9 x 76.2 cm)  
Edition of 45  
BM99-1433

30,000\*



RED LINE MUSES 2001  
2-color etching/1-color lithograph  
22 x 30" (55.9 x 76.2 cm)  
Edition of 45  
BM99-1432

30,000\*

\* Denotes limited availability



GEMINI G.E.L. <sup>AI</sup> JONI MOISANT WEYL

**JULIE MEHRETU**



MYRIADS, ONLY BY DARK 2014  
4-panel, multi-colored aquatint and spit bite  
Each panel 81 1/4 x 45 1/4" (205.7 x 114.3 cm)  
Edition of 30  
JM13-3531

\$ 275,000\*



AUGURIES 2010  
12-panel, 10-color etching  
87 x 180" (221 x 457.2 cm)  
Edition of 24  
JM10-3478

325,000\*



HAKA 2012  
1-color etching, with chine-collé  
12 x 14" (30.5 x 35.6 cm)  
Edition of 150  
JM12-3519

3,800



UNTITLED 1 (AMULETS) 2008  
1-color etching/chine-collé  
12 x 14" (30.5 x 35.6 cm)  
Edition of 150, AP11  
JM08-3441

5,400\*  
*framed*

**BRUCE NAUMAN**



COCKEYE LIPS FROM INFRARED OUTTAKES 2006  
Photographed by Jack Fulton (1968)  
Epson UltraChrome K3 inkjet print  
20 x 28" (50.8 x 71.1 cm)  
Edition of 60,  
BN06-9006

5,500

Please ask to see other work in this series

\* Denotes limited availability





GEMINI G.E.L. <sup>AT</sup> JONI MOISANT WEYL

**BRUCE NAUMAN—continued**



UNTITLED 1994  
1-color etching  
19 3/4 x 22" (50.2 x 55.9 cm)  
Edition of 50  
BN93-3206

\$ 4,000

Please ask to see other work in this series



NO - STATE 1981  
2-color lithograph  
30 x 43" (76.2 x 109.2 cm)  
Edition of 25, #2  
BN80-991A

25,000\*  
*framed*



M.AMPERE 1973  
2-color lithograph  
31 x 45 1/4" (78.7 x 114.9 cm)  
Edition of 50, #13  
Published by Cirrus Editions

15,000\*



VISION 1973  
1-color lithograph  
25 x 33 1/16" (63.5 x 84.0 cm)  
Edition of 40, #17  
BN72-494

15,000\*

**CLAES OLDENBURG**



MUSICAL HEARTS 2012  
2-color screenprint  
14 x 11 1/8" (35.6 x 28.3 cm)  
Edition of 150  
CO12-5363

3,800

\* Denotes limited availability



GEMINI G.E.L. <sup>AT</sup> JONI MOISANT WEYL

**LAURA OWENS**



UNTITLED 2001  
3-color etching with hand-cut Japanese fabric  
collaged elements  
20 x 16" (50.8 x 40.6 cm)  
Edition of 90, PP  
Published by Counter Editions

\$ 1,200\*  
*framed*

**KEN PRICE**



LIVING WITH ROCKS 2008  
3-color lithograph/screenprint  
14 x 14" (35.6 x 35.6 cm)  
Edition of 150  
KP08-1578

5,500  
*frame 250*

**ROBERT RAUSCHENBERG**



L.A. UNCOVERED #5 1998  
11-color screenprint  
31 x 22 3/4" (78.7 x 57.8 cm)  
Edition of 50  
RR98-5254

15,000\*



L.A. UNCOVERED #9 1998  
11-color screenprint  
31 x 22 1/2" (78.7 x 57.2 cm)  
Edition of 55  
RR98-5258

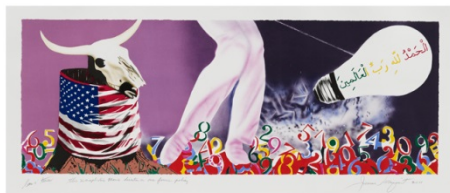
10,000

\* Denotes limited availability



GEMINI G.E.L. <sup>AT</sup> JONI MOISANT WEYL

**JAMES ROSENQUIST**



THE XENOPHOBIC MOVIE DIRECTOR OR  
OUR FOREIGN POLICY 2011  
18-color lithograph/screenprint  
25 x 58" (63.5 x 147.3 cm)  
Edition of 42  
JR11-1598

\$ 10,000

**ED RUSCHA**



UNSTRUCTURED MERRIMENT 2016  
19-color lithograph/screenprint  
23 1/4 x 30" (59.1 x 76.2 cm)  
Edition of 60, #36  
ER15-1636

15,000  
frame 500



WE THE PEOPLE 2012  
2-color lithograph  
14 x 14" (35.6 x 35.6 cm)  
Edition of 150  
ER12-1619

4,500

**ANALIA SABAN**



PRESSED PAINT (CADMIUM RED) 2017  
Acrylic paint pressed in linen  
Approx. 34 x 27" (86.4 x 68.6 cm)  
A series of 26 unique works (projected), #15  
AS17-255

8,500\*

Please inquire about additional works in this series

\* Denotes limited availability



GEMINI G.E.L. <sup>AT</sup> JONI MOISANT WEYL

**ANALIA SABAN—continued**



PITCHER #1 (SPILLED INTERIOR) 2017  
Stenciled ink monoprint  
22 x 30" (55.8 x 76.2 cm)  
Series of 34 unique works, #15  
AS17-246

\$ 3,500  
*frame 750*

[Please inquire about additional works in this series](#)



BRUSHSTROKE MATRIX XXL 2017  
Squeegeed vinyl paint monoprint with embossment on  
Somerset Satin White paper  
26 1/8 x 44 1/4" (66.3 x 112.4 cm)  
Series of 34 unique works  
AS16-239

3,500



BRUSHSTROKE MATRIX XS 2017  
Squeegeed vinyl paint monoprint with embossment on  
Somerset Satin White paper  
26 1/8 x 44 1/4" (66.3 x 112.4 cm)  
Series of 34 unique works  
AS16-244

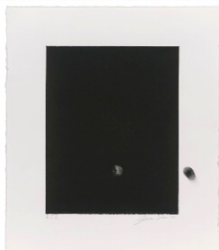
3,500

[Please inquire about additional works in this series](#)



ELECTRIC TOOTHBRUSH (ONE-CONTINUOUS LINE)  
2016  
1 color etching  
54 1/4 x 41 1/2" (137.8 x 105.4 cm)  
Edition of 18  
AS15-3542

6,500



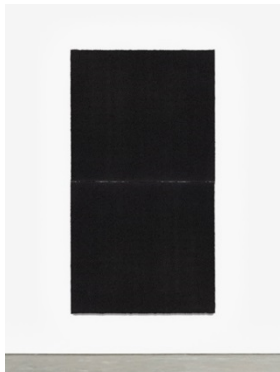
FINGERPRINT 2016  
1-color monotype  
13 x 11" (33 x 27.9 cm)  
A series of 38 unique works  
AS15-233

1,500



GEMINI G.E.L. <sup>AT</sup> JONI MOISANT WEYL

**RICHARD SERRA**



EQUAL VIII 2018  
Paintstik and silica on two sheets of handmade paper  
overall 71 1/2 x 39" (181.61 x 99 cm)  
Edition of 24  
RS16-4035

\$ 28,000



FINALLY FINISHED 2017  
1-color etching  
75 x 59 3/4" (190.5 x 151.7 cm)  
Edition of 62  
RS17-3556

POR



FINALLY FINISHED II 2017  
1-color etching  
75 x 59 3/4" (190.5 x 151.7 cm)  
Edition of 42, #25  
RS17-3562

60,000\*  
frame 3,700



FINALLY FINISHED III 2018  
1-color etching  
74 1/2 x 59 1/2" (190.5 x 151.7 cm)  
Edition of 44  
RS17-3563

60,000\*

\* Denotes limited availability



GEMINI G.E.L. <sup>AT</sup> JONI MOISANT WEYL

**RICHARD SERRA—continued**



FINALLY FINISHED IV 2018  
1-color etching  
74 1/2 x 60" (190.5 x 151.7 cm)  
Edition of 44  
RS17-3564

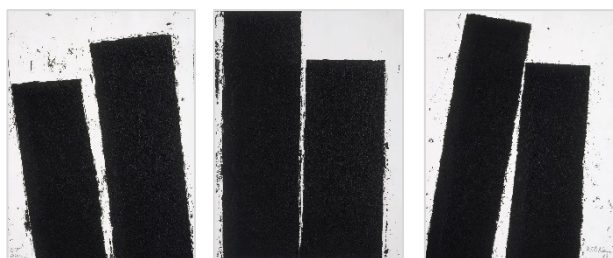
\$ 60,000\*



JUNCTION #5 2010  
1-color etching  
16 x 18" (40.6 x 45.7 cm)  
Edition of 50, #40  
RS10-3489

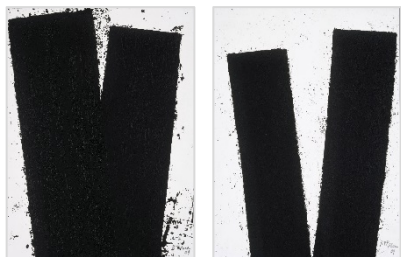
3,000  
frame 300

Please ask to view additional works from this series



PROMENADE NOTEBOOK DRAWING I-V 2009  
1-color etchings  
15 3/4 x 11 3/4" (40 x 29.8 cm) each  
Editions of 50  
RS09-3462-3466

30,000

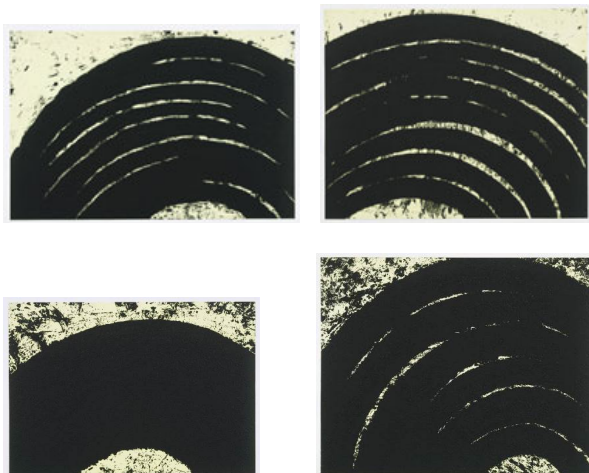


\* Denotes limited availability



GEMINI G.E.L. <sup>AT</sup> JONI MOISANT WEYL

**RICHARD SERRA—continued**



PATHS AND EDGES 2007

\$ 7,000 - 3,000

1-color etchings  
Signed and numbered on verso  
Various dimensions  
Editions of 60

Pictured: RS07-3415, RS07-3417,  
RS07-3422, RS07-3423



L.A.9.8. 1999

18,000\*

1-color etching  
21 1/2 x 34" (54.6 x 86.4 cm)  
Edition of 43  
RS98-3278

**BEN SHAHN**



LEVANA 1966

6,000

1-color lithograph with stamping  
30 x 22" (76.2 x 55.9 cm)  
Edition of 125, PP II  
BS66-1197

\* Denotes limited availability



GEMINI G.E.L. <sup>AT</sup> JONI MOISANT WEYL

**JOEL SHAPIRO**



GO (FOR OBAMA) 2012  
3-color screenprint  
13 1/2 x 14" (34.3 x 35.6 cm)  
Edition of 150  
JS12-5264

\$ 2,500



UP DOWN AROUND (b) 2011  
10-color screenprint/lithograph  
36 x 24" (91.4 x 61 cm)  
Edition of 45  
JS11-5344

4,000



BOAT, BIRD, MOTHER AND CHILD (a) 2009  
2-color (5 printings) screenprint  
33 x 26" (83.8 x 66 cm)  
Edition of 38  
JS09-5319

3,500

**SAUL STEINBERG**



LEGS 1992  
6-color etching  
21 1/4 x 25 3/4" (54 x 65.4 cm)  
Edition of 50, #22  
ST83-3106

2,300

**RICHARD TUTTLE**



YELLOW CIRCLE 2018  
Ceramic tile and vapor-coated polished steel  
19 x 24 x 18" (48.3 x 61 x 45.7 cm)  
Edition of 7, #6  
RT17-2236

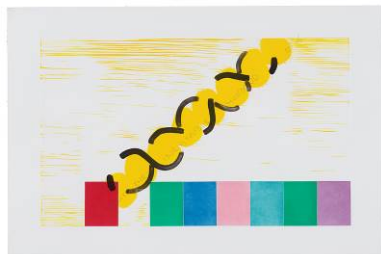
14,000





GEMINI G.E.L. <sup>AT</sup> JONI MOISANT WEYL

**RICHARD TUTTLE—continued**



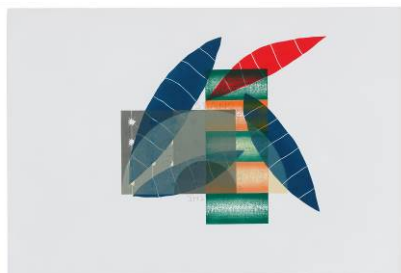
THE INEVITABLE HUSBAND, A 2015  
9-color linocut with aquatint and woodblock, pencil  
hand-drawing, title and signature elements applied  
by the artist  
22 3/4 x 33 7/8" (57.8 x 86 cm)  
Edition of 30  
RT14-229

\$ 4,500



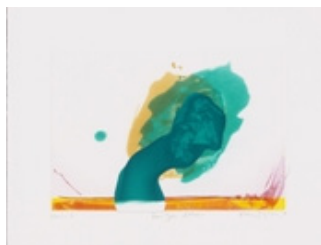
THE INEVITABLE HUSBAND, B 2015  
10-color linocut with embossing, hand-drawn title and  
signature elements applied by the artist  
24 1/4 x 37 1/2" (61.6 x 95.3 cm)  
Edition of 30  
RT14-230

4,500



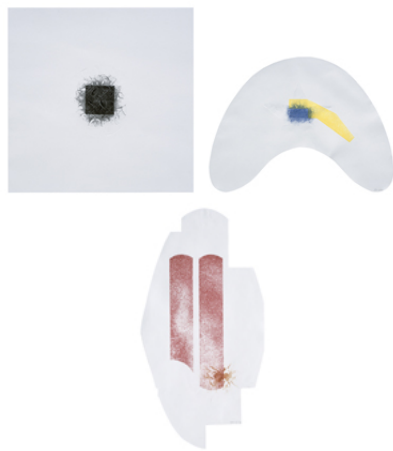
THE INEVITABLE HUSBAND, C 2015  
7-color linocut, pencil hand-drawing,  
title and signature elements applied by the artist  
26 x 38" (66 x 96.5 cm)  
Edition of 30  
RT14-231

4,500



"FOR JOHN ALTOON" 2011  
4-color etching with collage and pencil hand-drawing  
17 x 22" (43.2 x 55.9 cm)  
Edition of 35  
RT11-3512

3,800



METAL SHOES, 1, METAL SHOES, 3, METAL SHOES 5,  
2009  
Aquatints with copper plate embossments  
Various dimensions  
Editions of 30  
RT09-3470-3474

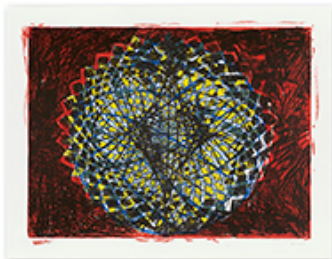
2,000-2,500



---

GEMINI G.E.L. <sup>AT</sup> JONI MOISANT WEYL

**TERRY WINTERS**



CLOCKS AND CLOUDS/1 2013  
4-color lithograph  
36 x 46" (91.4 x 116.8 cm)  
Edition of 35  
TW13-1626

\$ 6,000



CLOCKS AND CLOUDS/2 2013  
6-color lithograph  
36 x 46" (91.4 x 116.8 cm)  
Edition of 35  
TW12-1623

6,000



CLOCKS AND CLOUDS/5 2013  
6-color lithograph  
36 x 46" (91.4 x 116.8 cm)  
Edition of 35  
TW13-1625

6,000



CLOCKS AND CLOUDS/6 2013  
4-color lithograph  
36 x 46" (91.4 x 116.8 cm)  
Edition of 35  
TW13-1624

6,000