



GEMINI G.E.L. ^{AT} JONI MOISANT WEYL

GEMINI G.E.L. ^{AT} JONI MOISANT WEYL

535 West 24th Street, 3rd Floor, New York, NY 10011
(212) 249-3324 Telephone
(323) 791-2525 (Joni mobile)
gemi*ni*@joniweyl.com www.joniweyl.com
www.nga.gov/gemi*ni* – online catalogue raisonné

The Drake Hotel, Chicago Presentation
September 27 – September 30, 2018

JOHN BALDESSARI



BEST MEN 2018
Multi-color screenprint
33 x 28" (83.8 x 71.1 cm)
Edition of 50
JBA17-5412

\$ 5,000

Please inquire about additional works in this series



BOSS 2018
Multi-color screenprint
31 x 28" (83.8 x 71.1 cm)
Edition of 50
JBA17-5410

5,000

Please inquire about additional works in this series



AND ONE SARDINE 2018
Multi-color screenprint
35 1/2 x 28" (83.8 x 71.1 cm)
Edition of 50
JBA17-5414

5,000

Please inquire about additional works in this series



GEMINI G.E.L. ^{AT} JONI MOISANT WEYL

JOHN BALDESSARI—continued



HANDS & FEET: HANDS, DINNER TABLE & PERSON 2017 \$ 5,000
7-color screenprint
28 3/4 x 36" (73 x 91.4 cm)
Edition of 50
JBA16-5399



HANDS & FEET: HANDS, GLOVES & PERSON 2017 4,500
8-color screenprint
26 1/4 x 36" (66.7 x 91.4 cm)
Edition of 50
JBA16-5400



BIG CATCH 2016 7,500*
8-color screenprint *frame 590*
32 x 25 1/4" (81.3 x 64.1 cm)
Edition of 65, #24
JBA16-5394



TRAPEZOID 2016 8,000
3-color screenprint
36 1/4 x 36" (92.1 x 91.4 cm)
Edition of 60
JBA15-5386

* Denotes limited availability



GEMINI G.E.L. ^{AT} JONI MOISANT WEYL

JOHN BALDESSARI — continued



OCTAGON 2016
3-color screenprint
40 3/4 x 36" (103.5 x 91.4 cm)
Edition of 60
JBA15-5384

\$ 8,000



KARL LAGERFELD 2015
20-color screenprint
40 x 30 5/8" (101.6 x 77.8 cm)
Edition of 50
JBA14-5379

13,500



NUMBERED LEGS 2015
20-color screenprint
21 x 43 1/2" (53.3 x 110.5 cm)
Edition of 50
JBA14-5380

25,000*



FALL LINE 2015
13-color screenprint
48 x 19" (121.9 x 48.3 cm)
Edition of 50
JBA14-5378

20,000*

* Denotes limited availability



GEMINI G.E.L. ^{AT} JONI MOISANT WEYL

JOHN BALDESSARI — continued



PEA
SOUP

EIGHT SOUPS: PEA SOUP 2012

Color screenprint

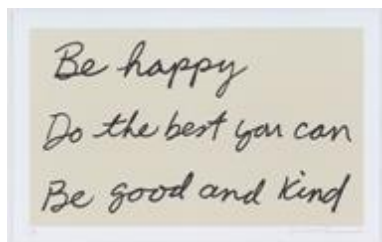
38 x 24 1/4" (96.5 x 61.6 cm)

Edition of 50, #35

JBA12-5352

\$ 15,600*
framed

JONATHAN BOROFKY



MY MOTHER'S WORDS 2010

2-color screenprint

34 1/2 x 55" (87.6 x 139.7 cm)

Edition of 45

JB08-5318

10,000*

SOPHIE CALLE



THE ADDRESS BOOK 2009

Portfolio of 28 prints in screenprinted binder,
with 3 related prints

15 1/4 x 12 5/8" (38.7 x 32.1 cm)

Edition of 45

SC09-2220

12,000

VIJA CELMINS



NIGHT SKY 3 2002

1-color photogravure/aquatint/drypoint

19 3/4 x 23 3/4" (50.2 x 60.3 cm)

Edition of 65

VC02-3337

18,000*

* Denotes limited availability



GEMINI G.E.L. ^{AT} JONI MOISANT WEYL

VIJA CELMINS — continued



UNTITLED (WEB 4) 2002
1-color photogravure/aquatint/drypoint
20 1/2 x 24 1/4" (52.1 x 61.6 cm)
Edition of 65
VC02-3335

\$ 14,000*



UNTITLED (WEB 3) 2002
1-color aquatint/drypoint
21 x 24 1/2" (53.3 x 62.2 cm)
Edition of 65
VC02-3332

14,000*



NIGHT SKY 2 (REVERSED) 2002
3-color photogravure/aquatint/photo-
etching/drypoint
20 3/4 x 24 1/2" (52.7 x 62.2 cm)
Edition of 65
VC02-3336

7,000



NIGHT SKY 1 (REVERSED) 2002
3-color photogravure/aquatint/photo-
etching/drypoint
21 x 24 1/2" (53.3 x 62.2 cm)
Edition of 65
VC02-3333

10,000*

WILLIAM CRUTCHFIELD



TAWNY OWL STATE I 1968
2-color lithograph and watercolor applied by the artist
20 x 14" (50.8 x 35.6 cm)
Edition of 75, PPII
WC67-1185

1,500

* Denotes limited availability



GEMINI G.E.L. ^{AT} JONI MOISANT WEYL

WILLEM DE KOONING



UNTITLED 1972
Cast pewter edition sculpture
6 1/2 x 11 x 2 3/8" (16.5 x 27.9 x 6 cm)
Edition of 100, #43
WDK72-2036

\$ 60,000

TACITA DEAN



LA EXUBERANCE 13 2016
Hand-drawn 3-color blend lithograph
29 7/8 x 29 7/8" (75.9 x 75.9 cm)
Edition of 36, #14
TD15-1654

6,000
frame 850



LA EXUBERANCE 2016
Hand-drawn 3-color blend lithograph
Each 29 7/8 x 29 7/8" (75.9 x 75.9 cm)
Editions of 36
TD15-1642-1656

6,000 each

Pictured, left to right:
LA Exuberance 2, 6, 7,
11, 12, 14

RICHARD DIEBENKORN



UNTITLED #1 1993
2-color lithograph, Estate Stamped
16 x 14" (40.6 x 35.6 cm)
Edition of 57
RIDI90-1262A

2,500



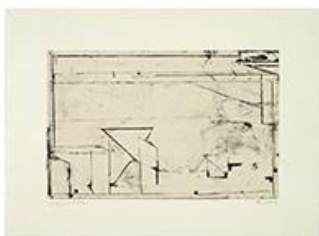
GEMINI G.E.L. ^{AT} JONI MOISANT WEYL

RICHARD DIEBENKORN — continued



UNTITLED #3 1993
6-color lithograph, Estate Stamped
11 x 15 1/8" (27.9 x 38.4 cm)
Edition of 68, #57
RIDI92-1331

\$ 2,500
frame 340



UNTITLED #6 1993
3-color lithograph, Estate Stamped
11 1/4 x 15 1/4" (28.6 x 38.7 cm)
Edition of 65
RIDI92-1333A

2,500



UNTITLED #7 1993
4-color lithograph, Estate Stamped
16 x 12 1/8" (40.6 x 30.8 cm)
Edition of 68
RIDI92-1334

2,500



UNTITLED #8 1993
4-color lithograph, Estate Stamped
15 1/4 x 11 1/8" (38.7 x 28.3 cm)
Edition of 59
RIDI92-1335

2,500

FRANK GEHRY



HOUSE STUDY 2 2016
1-color etching
37 1/4 x 17" (94.6 x 43.2 cm)
Edition of 35
FG16-3548

3,500



GEMINI G.E.L. ^{AT} JONI MOISANT WEYL

FRANK GEHRY — continued



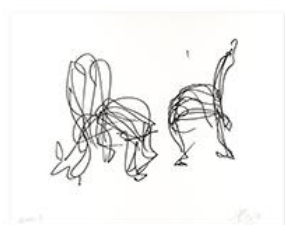
HOUSE STUDY DETAIL C 2016
1-color etching
15 1/2 x 18" (39.4 x 45.7 cm)
Edition of 35, #16
FG16-3550

\$ 1,800
frame 275



WALT DISNEY CONCERT HALL 2009
1-color lithograph
14 x 18" (35.6 x 45.7 cm)
Edition of 35
FG08-1589

2,800



SITONME 2008
1-color lithograph
12 x 14" (30.5 x 35.6 cm)
Edition of 150
FG07-1547

2,500

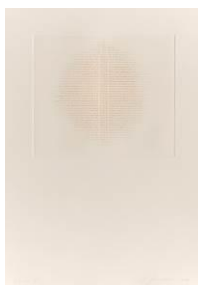
JOE GOODE



UNTITLED 1975
3-color screenprint on fabric, double layered, water
sprayed and sewn together
Uniquely cut and torn by the artist
20 1/2 x 24" (52.1 x 61.0 cm)
Edition of 24 unique works, #24
JG75-5140

5,000*
frame 500

ANN HAMILTON



THE ANIMAL HAND 2017
Blind embossment with hand-applied ink
16 3/8 x 11 1/2" (41.6 x 29.2 cm)
Edition of 35
AH17-3558

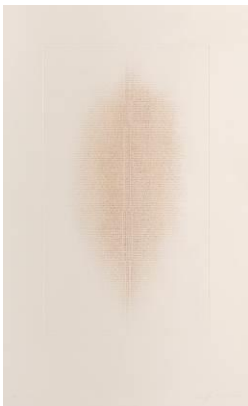
1,800

* Denotes limited availability



GEMINI G.E.L. ^{AT} JONI MOISANT WEYL

ANN HAMILTON — continued



THE EQUAL AND INALIENABLE RIGHTS OF ALL 2017 \$ 4,000
Blind embossment with hand-applied ink
34 1/4 x 21" (87 x 78.7 cm)
Edition of 35
AH17-3557



PAGE 24 2017 6,000
Unique cloth and word collage on book endpaper framed
unframed 8 3/8 x 5 1/2" (21.3 x 14 cm)
framed 16 3/4 x 13 7/8" (42.5 x 35.2 cm)
A series of unique works
AH17-251



KAKAPO GROUND PARROT (SEPIA) 2017 2,500
9-color screenprint frame 550
35 1/2 x 25" (90.1 x 63.5 cm)
Edition of 25, #20
AH15-5391A



KAKAPO GROUND PARROT 2017 2,500
9-color screenprint
35 1/2 x 25" (90.1 x 63.5 cm)
Edition of 25
AH15-5391



GEMINI G.E.L. ^{AT} JONI MOISANT WEYL

ANN HAMILTON — continued



BROWN GREATER GALAGO (SEPIA) 2017
10-color screenprint
35 1/2 x 25" (90.1 x 63.5 cm)
Edition of 25
AH15-5390A

\$ 2,500



BROWN GREATER GALAGO 2017
10-color screenprint
35 1/2 x 25" (90.1 x 63.5 cm)
Edition of 25
AH15-5390

2,500



shell 2007
Felt multiple with cotton stitching and black wire hanger
52 x 44 x 6" (132.1 x 111.8 x 15.2 cm)
Edition of 25, #10
AH07-2218

15,000

DAVID HOCKNEY



HENRY READING NEWSPAPER 1977
1-color lithograph
24 7/16 x 18 1/8" (62.1 x 46 cm)
Edition of 71, #20
DH76-807

10,000
framed



GEMINI G.E.L. ^{AT} JONI MOISANT WEYL

JASPER JOHNS



MAP 2012
2-color lithograph
14 x 11 1/2" (35.6 x 29.2 cm)
Edition of 150
JJ12-1612

\$ 10,000

ELLSWORTH KELLY



BLUE CURVE 2013
1-color lithograph
30 x 22" (76.2 x 55.9 cm)
Edition of 50
EK12-1617

12,000



RED CURVE 2013
1-color lithograph
30 x 22" (76.2 x 55.9 cm)
Edition of 50
EK12-1616

12,000



SMALL BLUE CURVE 2012
1-color lithograph
17 5/8 x 12 1/2" (44.8 x 31.75 cm)
Edition of 100
EK12-1615

6,000



SMALL RED CURVE 2012
1-color lithograph
17 5/8 x 12 1/2" (44.8 x 31.75 cm)
Edition of 100
EK12-1614

7,000



GEMINI G.E.L. ^{AT} JONI MOISANT WEYL

ELLSWORTH KELLY — continued



GREEN CURVES 2013
1-color lithograph
14 x 10" (35.6 x 25.4 cm)
Edition of 150
EK12-1610

\$ 7,500*



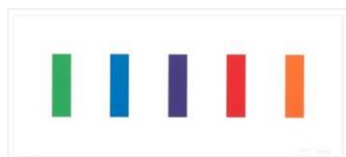
RED CURVES 2013
1-color lithograph
14 x 10" (35.6 x 25.4 cm)
Edition of 150
EK12-1609

9,000*



UNTITLED (FOR OBAMA) 2012
1-color lithograph
14 x 10" (35.6 x 25.4 cm)
Edition of 150
EK12-1608

5,000



COLOR PANELS 2011
5-color lithograph
14 x 33" (35.6 x 83.8 cm)
Edition of 45
EK11-1603

10,000



DARTMOUTH 2011
5-color lithograph
14 x 28 1/2" (35.6 x 72.4 cm)
Edition of 45
EK11-1604

10,000



BLUE GRAY GREEN RED 2008
4-color lithograph
12 x 14" (30.5 x 35.6 cm)
Edition of 150, SP 11
EK08-1578

7,500
frame 250



RED CURVE 2006
1-color lithograph
12 x 6 3/4" (30.5 x 17.2 cm)
Edition of 100
EK05-1533

7,500

* Denotes limited availability



GEMINI G.E.L. AT JONI MOISANT WEYL

ELLSWORTH KELLY — continued



ORANGE 2004
1-color lithograph
16 x 12" (40.6 x 30.5 cm)
Edition of 250
EK04-1507

\$ 8,000



SUNFLOWER I 2004
1-color lithograph
37 x 29" (94 x 73.7 cm)
Edition of 50
EK95-1398

22,000*

ROY LICHTENSTEIN



YELLOW BRUSHSTROKE 1985
2-color photo etching
31 x 19 7/8" (78.7 x 50.5 cm)
Edition of 40, AP 8
RL84-3128

30,000*

MAN RAY



HANDS 1966
2-color screenprint on Plexiglas
27 x 21" (68.6 x 53.3 cm)
Edition of 40, AP VIII
MR66-1195

12,500*
framed

* Denotes limited availability



GEMINI G.E.L. AT JONI MOISANT WEYL

BRICE MARDEN



GREYER MUSES 2001
2-color etching/1-color lithograph
22 x 30" (55.9 x 76.2 cm)
Edition of 45
BM99-1433

\$ 30,000*



RED LINE MUSES 2001
2-color etching/1-color lithograph
22 x 30" (55.9 x 76.2 cm)
Edition of 45
BM99-1432

30,000*

JULIE MEHRETU



ACHILLE (EPOCH) 2015
9-color aquatint with spit-bite
32 3/4 x 46 3/4" (83.2 x 118.7 cm)
Edition of 60
JM15-3545

18,000*



MYRIADS, ONLY BY DARK 2014
4-panel, multi-colored aquatint and spit bite
Each panel 81 1/4 x 45 1/4" (205.7 x 114.3 cm)
Edition of 30
JM13-3531

275,000*



HAKA 2012
1-color etching, with chine-collé
12 x 14" (30.5 x 35.6 cm)
Edition of 150
JM12-3519

3,800

* Denotes limited availability



GEMINI G.E.L. ^{AT} JONI MOISANT WEYL

JULIE MEHRETU — continued



UNTITLED (GREY AREA) 2010
1-color etching with chine-collé
12 x 14" (30.5 x 35.6 cm)
Edition of 40, #2
JM08-3442

\$ 7,500



UNTITLED 1 (AMULETS) 2008
1-color etching/chine-collé
12 x 14" (30.5 x 35.6 cm)
Edition of 150, AP 11
JM08-3441

5,500*
framed

MALCOLM MORLEY



RITE OF PASSAGE 1989
19-color etching
46 1/2 x 32 1/2" (118.1 x 82.6 cm)
Edition of 52, #36
MM88-3148

8,500
framed

ELIZABETH MURRAY



ST. MARKS from THE METROPOLITAN SERIES 2005
3-dimensional paper construction: collage and hand-coloring by the artist over multi-colored lithograph, mounted onto ragboard
framed 28 3/4 x 35 3/4 x 3" (73.0 x 90.8 x 7.6 cm)
Series of 24 unique works
EM04-216 (#14)

50,000
framed



DEEP NIGHT 1995
4-color intaglio
12 3/4 x 10 1/2" (32.4 x 26.7 cm)
Edition of 44, #35
EM94-3222

1,500

Please inquire about additional works in this series

* Denotes limited availability



GEMINI G.E.L. ^{AT} JONI MOISANT WEYL

ELIZABETH MURRAY — continued



RED VIOLET 1995
8-color lithograph/silkscreen/intaglio
16 3/4 x 15 3/8" (42.5 x 39.1 cm)
Edition of 59, #49
EM94-1368

\$ 3,000
frame 450

Please inquire about additional works in this series

BRUCE NAUMAN



HOUSE DIVIDED 1985
1-color drypoint/etching
28 x 39 1/8" (71.1 x 99.4 cm)
Edition of 23, #7
BN83-3086

16,000*
framed



M.AMPERE 1973
2-color lithograph
31 x 45 1/4" (78.7 x 114.9 cm)
Edition of 50, #13
Published by Cirrus Editions

15,000*



VISION 1973
1-color lithograph
25 x 33 1/16" (63.5 x 84.0 cm)
Edition of 40, #17
BN72-494

15,000*

* Denotes limited availability



GEMINI G.E.L. ^{AT} JONI MOISANT WEYL

CLAES OLDENBURG



GEOMETRIC MOUSE, SCALE E, "DESKTOP", 2013
Painted aluminum sculpture on painted
aluminum, signed-and-numbered base
6 1/2" x 8 1/4" x 6 1/2" (16.5 x 21.0 x 16.5 cm)
Edition of 50, #48
CO13-2234

\$ 15,000*



MUSICAL HEARTS 2012
2-color screenprint
14 x 11 1/8" (35.6 x 28.3 cm)
Edition of 150
CO12-5363

3,800



NOTES 1968
Boxed set of 12 lithographs with title page,
colophon, and 12 text pages
Each 22 11/16 x 15 3/4" (57.6 x 40 cm)
Editions of 100, #81
CO68-177 through CO68-188

72,000*

Pictured:
UNTITLED (FIRE PLUG) (CO68-181)
UNTITLED (BODY BUILDINGS) (CO68-187)

LAURA OWENS



UNTITLED 2001
3-color etching with hand-cut Japanese fabric
collaged elements
20 x 16" (50.8 x 40.6 cm)
Edition of 90, PP
Published by Counter Editions

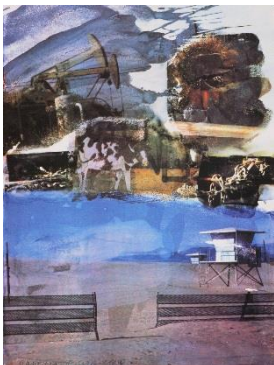
1,200*
framed

* Denotes limited availability



GEMINI G.E.L. ^{AT} JONI MOISANT WEYL

ROBERT RAUSCHENBERG



L.A. UNCOVERED #5 1998
11-color screenprint
31 x 22 3/4" (78.7 x 57.8 cm)
Edition of 58
RR98-5254

\$ 15,000*



L.A. UNCOVERED #9 1998
11-color screenprint
31 x 22 1/2" (78.7 x 57.2 cm)
Edition of 55, #22
RR98-5258

10,000
framed



UNTITLED 1996
Color lithograph
20 x 15" (50.8 x 38.1 cm)
Edition of 175, #97

5,500



PAGES & FUSES, LINK 1974
Handmade paper, pigment and screenprinted tissue
laminated to paper pulp
25 x 20" (63.5 x 50.8 cm)
Edition of 29, CTP 2
RR73-636

60,000*

* Denotes limited availability



GEMINI G.E.L. ^{AT} JONI MOISANT WEYL

ROBERT RAUSCHENBERG — continued



PAGES & FUSES, HIND 1974
Handmade paper, pigment and screenprinted tissue
laminated to paper pulp
26 x 20" (66.0 x 50.8 cm)
Edition of 34, #15
RR73-637

\$ 35,000*



WATER STOP 1968
5-color lithograph
54 x 32" (137.16 cm x 81.28 cm)
Edition of 28, PP 3
Published by Universal Limited Arts Edition

50,000*
framed

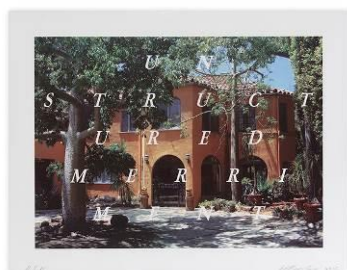
SUSAN ROTHENBERG



K 2004
1-color lithograph
13 x 17 3/4" (33.0 x 45.1 cm)
Edition of 250, #196
SR04-1513

2,000
frame 410

ED RUSCHA



UNSTRUCTURED MERRIMENT 2016
19-color lithograph/screenprint
23 1/4 x 30" (59.1 x 76.2 cm)
Edition of 60, #36
ER15-1636

15,000
frame 500



GEMINI G.E.L. ^{AT} JONI MOISANT WEYL

ED RUSCHA — continued



LIBERTY 2011
3-color lithograph/screenprint
25 3/4 x 19 3/4" (65.4 x 50.2 cm)
Edition of 75, #48
ER11-1605

\$ 10,000*
frame 560

ANALIA SABAN



HEAD VASE (SPILLED INTERIOR) 2017
Stenciled ink monoprint
22 x 30" (55.88 x 76.20 cm)
A series of 34 unique works
AS17-245

3,500

[Please inquire about additional works in this series](#)



PITCHER #4 (SPILLED INTERIOR) 2017
Stenciled ink monoprint
22 x 30" (55.8 x 76.2 cm)
Series of 34 unique works
AS17-249

3,500

[Please inquire about additional works in this series](#)



BRUSHSTROKE MATRIX XXL 2017
Squeegeed vinyl paint monoprint with embossment on
Somerset Satin White paper
26 1/8 x 44 1/4" (66.3 x 112.4 cm)
Series of 34 unique works
AS16-239

3,500

[Please inquire about additional works in this series](#)



BRUSHSTROKE MATRIX XS 2017
Squeegeed vinyl paint monoprint with embossment on
Somerset Satin White paper
26 1/8 x 44 1/4" (66.3 x 112.4 cm)
Series of 34 unique works
AS16-244

3,500

[Please inquire about additional works in this series](#)



GEMINI G.E.L. ^{AT} JONI MOISANT WEYL

ANALIA SABAN — continued



BROKEN VASE NO. 3 2016
Acrylic matte medium and crushed paper construction
28 x 20" (71.1 x 50.8 cm)
A series of 20 unique works, #5
AS15-236

\$ 4,650*
framed



FINGERPRINT 2016
1-color monotype
13 x 11" (33 x 27.9 cm)
A series of 38 unique works
AS15-233

1,500

RICHARD SERRA



FINALLY FINISHED IV 2018
1-color etching
74 ½ x 60" (190.5 x 151.7 cm)
Edition of 44
RS17-3564

60,000*



FINALLY FINISHED III 2018
1-color etching
74 ½ x 59 ½" (190.5 x 151.7 cm)
Edition of 44
RS17-3563

60,000*

* Denotes limited availability



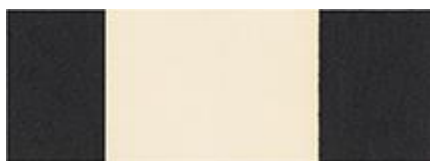
GEMINI G.E.L. ^{AT} JONI MOISANT WEYL

RICHARD SERRA — continued



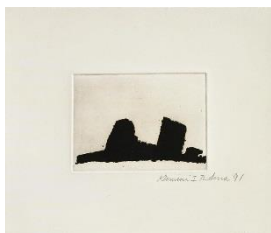
FINALLY FINISHED II 2017
1-color etching
75 x 59 3/4" (190.5 x 151.7 cm)
Edition of 42
RS17-3561

\$ 60,000*



HORIZONTAL REVERSAL III 2017
Hand-applied Paintstik and silica on two sheets of
handmade paper, signed on verso
overall 15 x 42" (38.1 x 106.7 cm)
Edition of 50, #13
RS15-4020

12,000
frame 1,350



VIDEY AFANGAR #2 1991
1-color etching
10 1/2 x 12" (26.7 x 30.5 cm)
Edition of 75, #55
RS90-3158

6,500*
framed



VIDEY AFANGAR #6 1991
1-color etching
10 1/2 x 12" (26.7 x 30.5 cm)
Edition of 75, #55
RS90-3162

6,500*
framed



VIDEY AFANGAR #9 1991
1-color etching
13 1/2 x 10 1/2" (34.3 x 26.7 cm)
Edition of 75, #55
RS90-3165

6,500*
framed

* Denotes limited availability



GEMINI G.E.L. ^{AT} JONI MOISANT WEYL

BEN SHAHN



LEVANA 1966
1-color lithograph with stamping
30 x 22" (76.2 x 55.9 cm)
Edition of 125, PP II
BS66-1197

\$ 6,000

JOEL SHAPIRO



UP DOWN AROUND (b) 2011
10-color screenprint/lithograph
36 x 24" (91.4 x 61 cm)
Edition of 45
JS11-5344

4,000



BOAT, BIRD, MOTHER AND CHILD (a) 2009
2-color (5 printings) screenprint
33 x 26" (83.8 x 66 cm)
Edition of 38
JS09-5319

3,500



BOAT, BIRD, MOTHER AND CHILD (g) 2009
3-color (8 printings) screenprint
29 x 33 1/2" (73.7 x 85.1 cm)
Edition of 38, #12
JS09-5325

4,000
frame 750



GEMINI G.E.L. ^{AT} JONI MOISANT WEYL

SAUL STEINBERG



LEGS 1992
6-color etching
21 1/4 x 25 3/4" (54 x 65.4 cm)
Edition of 50, #22
ST83-3106

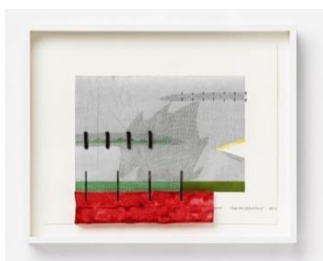
\$ 2,300

RICHARD TUTTLE



BLOSSOM 2017
4-color etching with chine collé,
red pen addition by the artist
22 x 11" (55.9 x 27.9 cm)
Edition of 30, #14
RT15-3553

2,500
frame 480



"PACIFIC SERIOUSLY" 2012
6-color spit bite, aquatint, chine collé and paper pulp
construction, each with unique hand-drawing by the artist
20 1/4 x 25 1/4 x 2" (51.4 x 64.1 x 5.08 cm), framed
A series of 38 unique works, #24
RT11-224

6,500
framed