

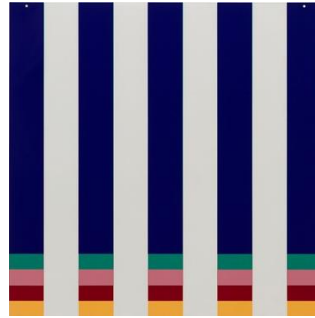


New Publications

Daniel Buren
On Transparency: Situated Mylars II, 2017-2019
 6-layer, uniquely configured screenprints on Mylar
 30 7/8" x 30 7/8" (78.3 x 78.3 cm)
 Edition of 2
 DB17-5432



On Transparency: Situated Mylars II
 DB17-5432 (C-H-I-J-G-W)



On Transparency: Situated Mylars II
 DB17-5432 (G-C-H-I-J-W)

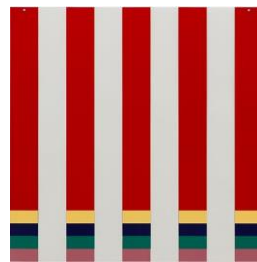


On Transparency: Situated Mylars II
 DB17-5432 (J-G-C-H-I-W)

Additional variations:



On Transparency: Situated Mylars II
 DB17-5432 (H-I-J-G-C-W)

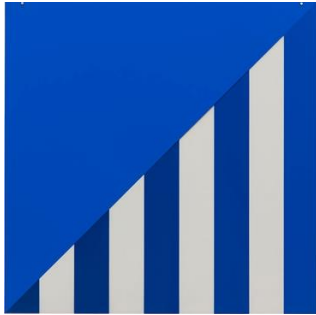


On Transparency: Situated Mylars II
 DB17-5432 (I-J-G-C-H-W)



GEMINI G.E.L. AT JONI MOISANT WEYL
ART | BASEL | June 13-16, 2019
 Hall 2.0, Booth E5 | gemini@joniweyl.com

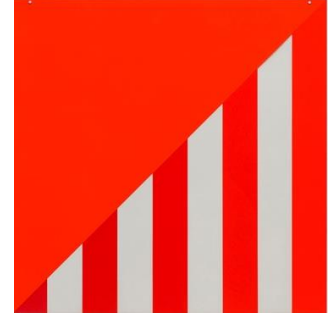
Daniel Buren
On Transparency: Situated Mylars VI, 2017-2019
 7-layer, uniquely configured screenprints on Mylar
 30 7/8" x 30 7/8" (78.3 x 78.3 cm)
 Edition of 2
 DB17-5436



On Transparency: Situated Mylars VI
 DB17-5436 (B-B-B-B-B-W)



On Transparency: Situated Mylars VI
 DB17-5436 (C-C-C-C-C-W)



On Transparency: Situated Mylars VI
 DB17-5436 (D-D-D-D-D-W)

Additional variations:



On Transparency: Situated Mylars VI
 DB17-5436 (A-A-A-A-A-W)



On Transparency: Situated Mylars VI
 DB17-5436 (E-E-E-E-E-W)



On Transparency: Situated Mylars VI
 DB17-5436 (F-F-F-F-F-W)

* limited availability

prices and availability are subject to change without notice



GEMINI G.E.L. AT JONI MOISANT WEYL
ART | BASEL | June 13-16, 2019
Hall 2.0, Booth E5 | gemini@joniweyl.com



Julie Mehretu
Six Bardos: Luminous Appearance, 2018
2-panel, 19-color aquatint
Overall: 99 1/4" x 74 3/4" (252.1 x 189.9 cm)
Edition of 25, #22
JM17-3569



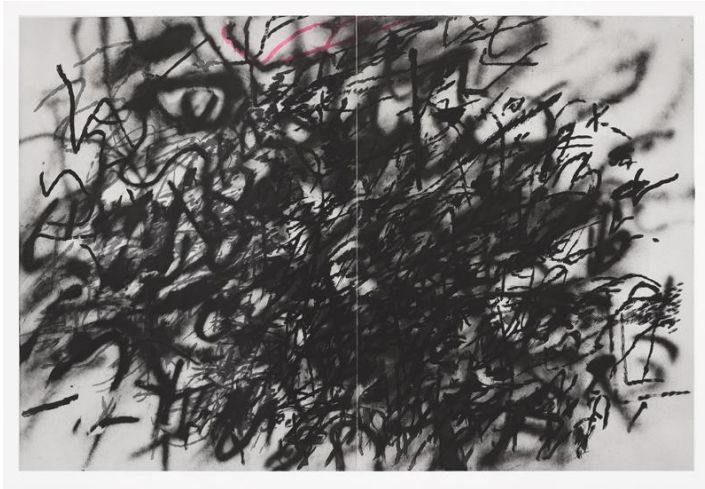
Julie Mehretu
Six Bardos: Transmigration, 2018
2-panel, 31-color aquatint
Overall: 99 1/4" x 74 3/4" (252.1 x 189.9 cm)
Edition of 25, GEM I
JM17-3570

* limited availability

prices and availability are subject to change without notice



GEMINI G.E.L. AT JONI MOISANT WEYL
ART | BASEL | June 13-16, 2019
Hall 2.0, Booth E5 | gemini@joniweyl.com



Julie Mehretu
Six Bardos: Last Breath, 2018
4 color aquatint
Unframed dimensions: 50 ¼" x 73 ¼"
(127.6 x 186.1 cm)
Edition of 45, #GEM I
JM17-3565



Julie Mehretu
Six Bardos: Transmutation, 2018
31 color aquatint
Unframed dimensions: 50 ¼" x 61 ¼"
(127.6 x 155.6 cm)
Edition of 45, #27
JM17-3568

* limited availability

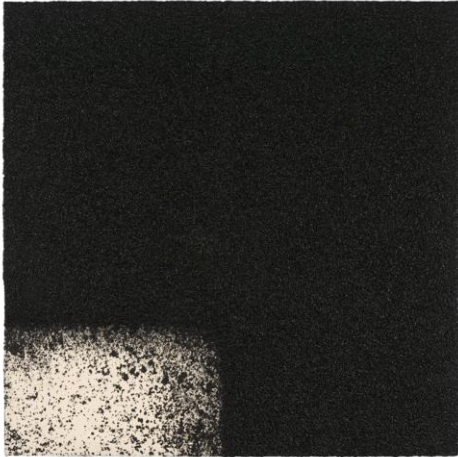
prices and availability are subject to change without notice



GEMINI G.E.L. AT JONI MOISANT WEYL
ART | BASEL | June 13-16, 2019
Hall 2.0, Booth E5 | gemini@joniweyl.com



Richard Serra
Right Angle I, 2019
1 color etching and Paintstik
Unframed dimensions: 18" x 15"
(45.7 x 38.1 cm)
Edition of 48
RS19-4059



Richard Serra
Right Angle II, 2019
1 color etching and Paintstik
Unframed dimensions: 27" x 27"
(68.6 x 68.6 cm)
Edition of 38
RS19-4060



Richard Serra
Right Angle III, 2019
1 color etching and Paintstik
Unframed dimensions: 32" x 34"
(81.3 x 86.4 cm)
Edition of 28
RS19-4061

* limited availability

prices and availability are subject to change without notice

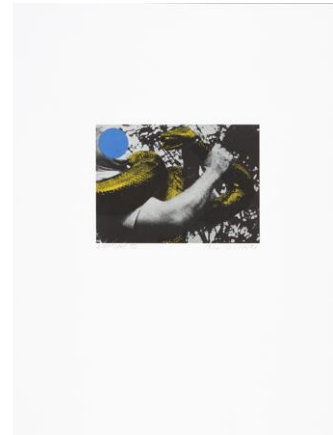


GEMINI G.E.L. AT JONI MOISANT WEYL
ART | BASEL | June 13-16, 2019
Hall 2.0, Booth E5 | gemini@joniweyl.com

Featured Publications



John Baldessari
ADAM WASN'T INTO IT, 2018
10 color screenprint
Unframed dimensions: 33" x 28"
(83.8 x 71.1 cm)
Edition of 50, #25
JBA17-5408



John Baldessari
Man with Snake (Blue and Yellow), 1991
3 color lithograph
Unframed dimensions: 18" x 13 7/8"
(45.7 x 35.2 cm)
Edition of 170, #121
JBA90-1246



GEMINI G.E.L. AT JONI MOISANT WEYL
ART | BASEL | June 13-16, 2019
Hall 2.0, Booth E5 | gemini@joniweyl.com



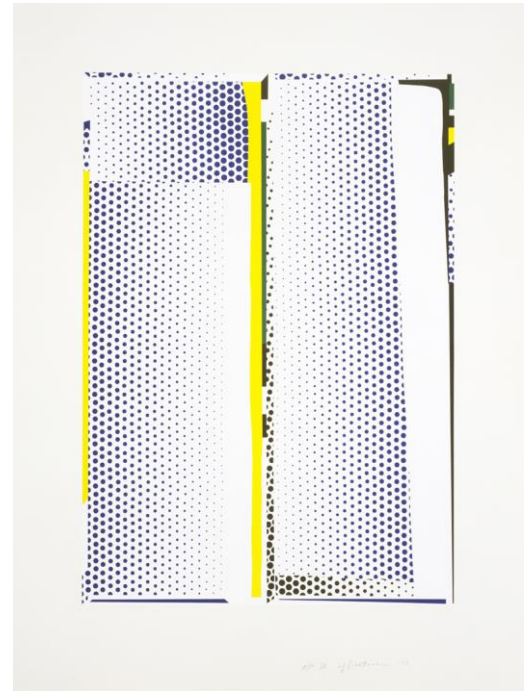
David Hockney
Nicholas Wilder, 1976
1 color lithograph
Unframed dimensions: 32 7/8" x 24 7/8" (83.50 x 63.18 cm)
Edition of 95, #35
DH76-764



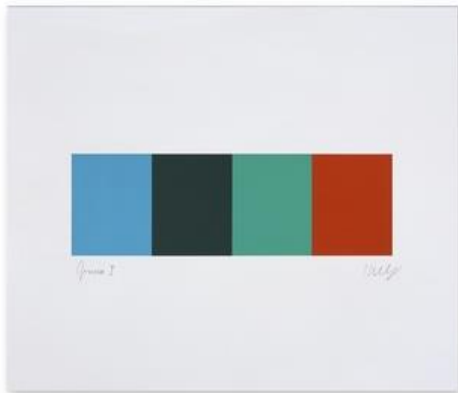
GEMINI G.E.L. AT JONI MOISANT WEYL
ART | BASEL | June 13-16, 2019
Hall 2.0, Booth E5 | gemini@joniweyl.com



Ellsworth Kelly
Red Curve, 2006
1 color lithograph
Unframed dimensions: 12" x 6 3/4"
(30.48 x 17.15 cm)
Edition of 100, #92
EK05-1533



Roy Lichtenstein
Mirror #9, 1972
5 color lithograph/silkscreen
Unframed dimensions: 39" x 29 1/4"
(99.06 x 74.30 cm)
Edition of 80, #17
RL72-437



Ellsworth Kelly
Blue Gray Green Red, 2008
4 color lithograph
Unframed dimensions: 12" x 14"
(30.48 x 35.56 cm)
Edition of 150, #AP14
EK08-1578

* limited availability

prices and availability are subject to change without notice



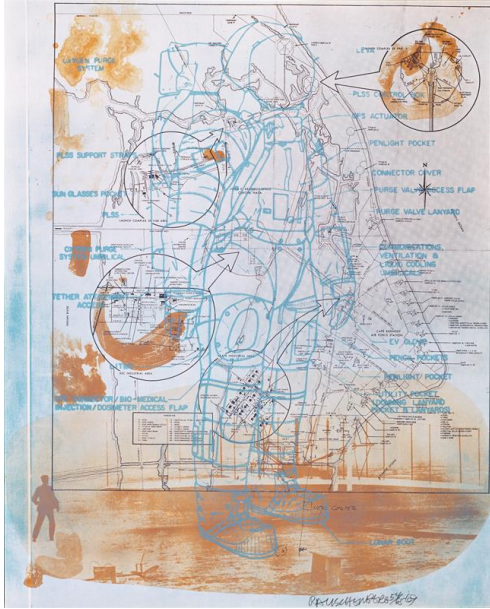
GEMINI G.E.L. AT JONI MOISANT WEYL
ART | BASEL | June 13-16, 2019
Hall 2.0, Booth E5 | gemini@joniweyl.com



Bruce Nauman
Eat Death, 1973
3 color lithograph
42 1/2" x 31 1/8" (107.95 x 79.06 cm)
Edition of 68, #2
BN72-489



GEMINI G.E.L. AT JONI MOISANT WEYL
ART | BASEL | June 13-16, 2019
 Hall 2.0, Booth E5 | gemini@joniweyl.com



Robert Rauschenberg
Stoned Moon Series, Trust Zone, 1969
 3 color lithograph
 Unframed dimensions: 40" x 33"
 (101.6 x 83.8 cm)
 Edition of 65, #2
 RR69-272



Robert Rauschenberg
Stoned Moon Series, Score, 1970
 3 color lithograph
 Unframed dimensions: 26" x 19 1/2"
 (66 x 49.5 cm)
 Edition of 75, #AP14
 RR69-307



Robert Rauschenberg
Stoned Moon Series, Sub-Total, 1972
 3 color lithograph
 Unframed dimensions: 8" x 12 1/2"
 (20.3 x 31.8 cm)
 Edition of 500, #434
 RR69-304



GEMINI G.E.L. AT JONI MOISANT WEYL
ART | BASEL | June 13-16, 2019
Hall 2.0, Booth E5 | gemini@joniweyl.com



Richard Serra
Paths and Edges #8, 2007
1 color etching
Unframed dimensions: 23 ½" x 29 ½"
(59.69 x 74.93 cm)
Edition of 60, #30
RS07-3420



Richard Serra
Paths and Edges #4, 2007
1 color etching
Unframed dimensions: 21 ½" x 38 ½"
(54.61 x 97.79 cm)
Edition of 60, #37
RS07-3416



GEMINI G.E.L. AT JONI MOISANT WEYL
ART | BASEL | June 13-16, 2019
Hall 2.0, Booth E5 | gemini@joniweyl.com



Franz West
Honeymoon, 2012
Paper-mâché with wire mesh
39" x 3/4" (99.1 x 1.9 cm)
30 unique works, #11
FW11-225