



GEMINI G.E.L. ^{AI} JONI MOISANT WEYL

INAUGURAL EXHIBITION

February 16 – April 21, 2012

RICHARD ARTSCHWAGER



THE DISCOVERY OF UP AND DOWN 2008
1-color etching
46 x 32 3/4" (116.8 x 83.2 cm)
Edition of 35, #18 framed
RA08-3432

JOHN BALDESSARI



GOD NOSE 2007
Hand-painted cast aluminum
36 x 37 x 6" (91.4 x 94.0 x 15.2 cm)
Edition of 25, #21
JBa07-2219

JONATHAN BOROFKY



MAN WITH A BRIEFCASE 2012
1/4" aluminum, painted white
89 1/4 x 35 1/2" (226.7 x 90.2 cm)
Edition of 15
JB12-2229

SOPHIE CALLE



THE ADDRESS BOOK 2009
Portfolio of 28 prints in screenprinted binder; one etching with gold leaf,
one blind embossment and one 5-color lithograph with book cloth
15 1/4 x 12 5/8" (38.7 x 32.1 cm)
Edition of 45, #22 framed
SC09-2220



GEMINI G.E.L. ^{AT} JONI MOISANT WEYL

INAUGURAL EXHIBITION

February 16 – April 21, 2012

VIJA CELMINS



DRYPOINT - OCEAN SURFACE (SECOND STATE) 1985
1-color drypoint
24 x 19" (61.0 x 48.3 cm)
Edition of 55 Plus 12 Artist Proofs, AP 7/12 framed
VC84-3101

JOHN CHAMBERLAIN



AMUSING MUSE 2007
Chrome-plated bronze, cast from foam carving
12 x 11 x 10" (30.5 x 27.9 x 25.4 cm)
Edition of 9, #9
JC04-2216

MARK DI SUVERO



T'ANG 1977
5-piece sculpture of torch-cut steel
14 7/8 x 12 7/8 x 5/8" (37.8 x 32.7 x 1.6 cm)
Edition of 50, GEM III
MDS77-2041

FRANK GEHRY



BEEKMAN STREET HOUSING 2009
1-color lithograph
32 x 18" (81.3 x 45.7 cm)
Edition of 35, #20 framed
FG08-1594



GEMINI G.E.L. ^{AI} JONI MOISANT WEYL

INAUGURAL EXHIBITION

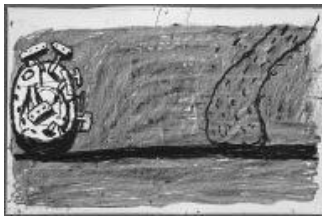
February 16 – April 21, 2012

ROBERT GOBER



UNTITLED 2002
4-color lithograph
51 x 36" (129.5 x 91.4 cm)
Edition of 65, #16 framed
RoGoo1-1485

PHILIP GUSTON



SCENE 1981
1-color lithograph
20 x 29 3/4" (50.8 x 75.6 cm)
Edition of 50, #40 framed
PG79-930

ANN HAMILTON



ciliary 2010
Lithograph, fabric, bamboo and hardwood dowel construction
diameter 58" (diameter 147.3 cm)
Series of 19 unique works
AH09-223 (#11)

additional works available:



DAVID HOCKNEY



HENRY GELDZAHLER WITH HAT 1976
1-color lithograph
14 1/2 x 12" (36.8 x 30.5 cm)
Edition of 96, #2 framed
DH76-760



GEMINI G.E.L. ^{AT} JONI MOISANT WEYL

INAUGURAL EXHIBITION
February 16 – April 21, 2012

JASPER JOHNS



FIGURE 7 (FROM COLOR NUMERALS SERIES) 1969
3-color lithograph
38 x 31" (96.5 x 78.7 cm)
Edition of 40, GEM III framed
JJ68-208

ELLSWORTH KELLY



COLOR SQUARES 1 2011
5-color lithograph
21 x 77" (53.3 x 195.6 cm)
Edition of 35, #20 framed
EK11-1600

ROY LICHTENSTEIN



VIEW FROM THE WINDOW 1985
40-color lithograph/woodcut/screenprint
79 9/16 x 33 9/16" (202.1 x 85.2 cm)
Edition of 60 Plus 6 Special Proofs, SP 5/6 framed
RL85-1121

BRICE MARDEN



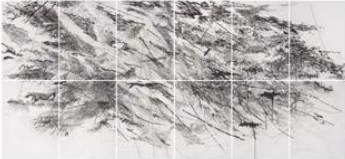
LINE MUSES 2001
3-color etching/lithograph
22 x 30" (55.9 x 76.2 cm)
Edition of 45 Plus 8 Artist Proofs, AP 6/8 framed
BM99-1434



GEMINI G.E.L. ^{AT} JONI MOISANT WEYL

INAUGURAL EXHIBITION
February 16 – April 21, 2012

JULIE MEHRETU



AUGURIES 2010
12-panel aquatint with spit bite (from 48 plates)
87 x 180" (221.0 x 457.2 cm)
Edition of 24, #13 framed
JM10-3478

MALCOLM MORLEY



EROTIC FRUITOS 1993
10-color intaglio
47 3/4 x 35 1/2" (121.3 x 90.2 cm)
Edition of 49, #22 framed
MM89-3149

ELIZABETH MURRAY



'MESSIN AROUND 2006
From SWEETZER SUITE, a series of 3-dimensional assemblages of hand-carved foam, each hand-painted by the artist
approx. 37 x 29" (94.0 x 73.7 cm)
Series of 16 unique collages
EM06-218 (#2)

BRUCE NAUMAN



PAY ATTENTION 1973
1-color lithograph
38 1/4 x 28 1/4" (97.2 x 71.8 cm)
Edition of 50, GEM I
BN72-492



GEMINI G.E.L. ^{AT} JONI MOISANT WEYL

INAUGURAL EXHIBITION

February 16 – April 21, 2012

ISAMU NOGUCHI



FIGURE EMERGING 1983
Galvanized steel sculpture
71 x 22 x 14" (180.3 x 55.9 x 35.6 cm)
Edition of 18
IN82-2106

CLAES OLDENBURG



PROFILE AIRFLOW 1969
Wall relief of molded polyurethane
over 2-color lithograph, aluminum frame
33 1/2 x 65 1/2" (85.1 x 166.4 cm)
Edition of 75, #49
CO68-304

KEN PRICE



NORTH OF EL PRADO 1993
Earthenware with hand-painted glaze
in wooden display box
3 1/4 x 5 1/2 x 4" (8.3 x 14.0 x 10.2 cm)
Edition of 25, #23
KP92-2179

ROBERT RAUSCHENBERG



BOOSTER 1967
5-color lithograph/screenprint
72 x 35 1/2" (182.9 x 90.2 cm)
Edition of 38 Plus 12 Artist Proofs, AP 2/12 framed
RR67-106



GEMINI G.E.L. ^{AI} JONI MOISANT WEYL

INAUGURAL EXHIBITION

February 16 – April 21, 2012

DOROTHEA ROCKBURNE



DEVINE RAY 1983
9-color lithograph on Transpagra, printed both sides
then cut, folded and mounted onto ragboard
40 x 35" (101.6 x 88.9 cm)
Edition of 44, #10 framed
DR81-1019

JAMES ROSENQUIST



THE XENOPHOBIC MOVIE DIRECTOR OR OUR FOREIGN
POLICY 2011
18-color lithograph/screenprint
25 x 58" (63.5 x 147.3 cm)
Edition of 42, #20 framed
JR11-1598

SUSAN ROTHENBERG



PUPPET SERIES #1 2008
1-color mezzotint
16 1/2 x 16" (41.9 x 40.6 cm)
Edition of 50, #17 framed
SR08-3434



PUPPET SERIES #4 2008
1-color mezzotint
16 1/2 x 16" (41.9 x 40.6 cm)
Edition of 50, #20 framed
SR08-3446

RICHARD SERRA



TRAJECTORY #1 2004
1-color etching
67 x 48" (170.2 x 121.9 cm)
Edition of 48, #13 framed
RS04-3376



GEMINI G.E.L. ^{AI} JONI MOISANT WEYL

INAUGURAL EXHIBITION

February 16 – April 21, 2012

JOEL SHAPIRO



BOAT, BIRD, MOTHER AND CHILD (e) 2009
2-color (6 printings) screenprint
40 x 45 3/4" (101.6 x 116.2 cm)
Edition of 38, #22 framed
JS09-5323

FRANK STELLA



YORK FACTORY II 1974
53-color screenprint
18 7/16 x 44 7/16" (46.8 x 112.9 cm)
Edition of 100 Plus 20 Artist Proofs, AP 1/20 framed
FS73-5090

RICHARD TUTTLE



METAL SHOES, 6 2009
Lithograph and aquatint with drypoint,
embossment and hand stenciling
30 x 40" (76.2 x 101.6 cm)
Series of 30 unique works
RT09-3475 (#20)



GEMINI G.E.L. ^{AT} JONI MOISANT WEYL

INAUGURAL EXHIBITION
February 16 – April 21, 2012

Additional works not on view:

WILLIAM CRUTCHFIELD



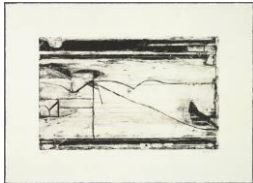
OLD JENNY 1967
2-color lithograph/watercolor
12 x 19 1/2" (30.5 x 49.5 cm)
Edition of 56, #22 framed
WC67-1181

WILLEM DE KOONING



UNTITLED 1972
Cast pewter sculpture
6 1/2 x 11 x 2 3/8" (16.5 x 27.9 x 6.0 cm)
Edition of 100
WDK72-2036

RICHARD DIEBENKORN



UNTITLED #2 1993
1-color lithograph
11 x 15" (30.5 x 38.1 cm)
Edition of 53, #52 framed
Estate Stamped
RiDi92-1330

JOE GOODE



UNTITLED (from TISSUE TEAR SERIES) 1975
2-layer, 3-color lithograph
Uniquely cut and torn by the artist
27 3/4 x 37 3/4" (70.5 x 95.9 cm)
Edition of 35, #13 framed
JG75-743



GEMINI G.E.L. ^{AI} JONI MOISANT WEYL

INAUGURAL EXHIBITION

February 16 – April 21, 2012

ROBERT GRAHAM



UNTITLED 1984
Unglazed porcelain sculpture
4 x 2 1/2 x 1 3/4" (10.2 x 6.4 x 4.4 cm)
Edition of 15, #7
RG81-2112

MICHAEL HEIZER



MONTANA SURVEY #1 1985
2-color photo-etching and drypoint
16 x 14 3/4" (40.6 x 37.5 cm)
Edition of 42, #21 framed
MH81-3032

EDWARD KIENHOLZ



THE OPTI-CAN ROYALE 1977
Editioned metal sculpture with Fresnel lens system, light bulb and
set of six photographs
12 1/2 x 8 7/8 x 8 1/2" (31.8 x 22.5 x 21.6 cm)
Edition of 55, #2
EdK76-2039

ED RUSCHA



1984 1967
2-color lithograph/watercolor
20 x 25" (50.8 x 63.5 cm)
Edition of 60
ER67-149



GEMINI G.E.L. ^{AT} JONI MOISANT WEYL

INAUGURAL EXHIBITION

February 16 – April 21, 2012

KEITH SONNIER



VIDEO STILL SCREEN V 1973
3-color screenprint on two layers of Mylar and Armomari paper
36 x 27 3/4" (91.4 x 70.5 cm)
Edition of 50
KS73-5064

SAUL STEINBERG



PROVINCETOWN 1984
1-color etching and drypoint
21 3/8 x 25" (54.3 x 63.5 cm)
Edition of 54, #19 framed
ST83-3104