



GEMINI G.E.L. AT JONI MOISANT WEYL

A WOMAN'S PLACE IS IN THE WORKSHOP



Elizabeth Murray

"Do I Love You" from *Rooftops With Flying Geese* 2003
Multi-colored lithograph/screenprint, cut, collaged &
handpainted by the artist
approximately 50 x 42" (127 x 106.7 cm)
One from a series of 6 unique works (#2)
EM03-214

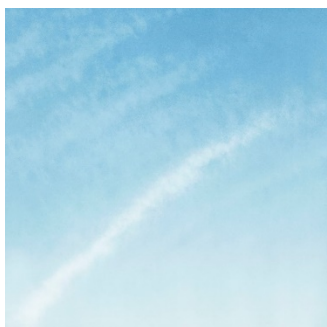
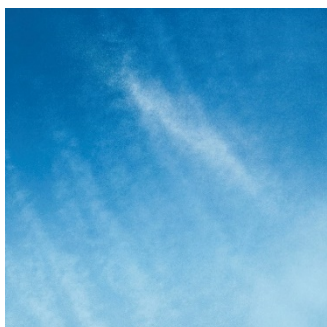
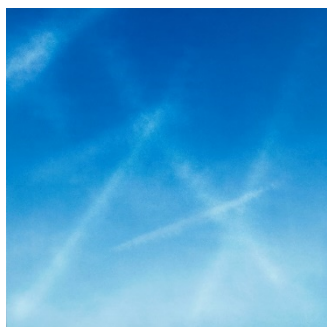
POR



Elizabeth Murray

"St. Marks" from *The Metropolitan Series* 2005
Collage & handcoloring by the artist over multi-
colored lithograph, mounted onto ragboard
28 x 35 x 1 5/8" (71.1 x 88.9 x 4.1 cm)
One from a series of 24 unique works (#14)
EM04-216

50,000
framed



Tacita Dean

LA Exuberance 5, 6, 11, 15 2016
Hand-drawn, 3-color blend lithographs
Each 29 7/8 x 29 7/8" (75.9 x 75.9 cm)
Editions of 36, #32
TD15-1646-1656
7,500 each frames 850



GEMINI G.E.L. ^{AT} JONI MOISANT WEYL



Julie Mehretu

POR

*This Manifestation of Historical Restlessness,
(from Robin's Intimacy) 2022*

10-panel etching/aquatint from 50 plates
overall 93 1/2 x 173 1/8" (237.5 x 439.7 cm)

Edition of 28

JM19-3596



Tacita Dean

12,500

Pantone Pairs 2019

*framed
(each)*

Found Pantone cards paired with a postcard from
the artist's collection, monoprinted and framed to
the artist's specifications

12 1/2 x 15 x 1 1/2" (31.8 x 38.1 x 3.8 cm) each

Selections from a series of 80 unique works

TD19-258

Pictured: *Limeade*



Analia Saban

6,000

Broken Vase No. 3 2016

frame 700

Acrylic matte medium and crushed paper construction

28 x 20" (71.1 x 50.8 cm)

A series of 20 unique works (#5)

AS15-236



Analia Saban

6,000

Broken Vase No. 5 2016

frame 700

Acrylic matte medium and crushed paper construction

28 x 20" (71.1 x 50.8 cm)

A series of 20 unique works (#14)

AS15-238



GEMINI G.E.L. AT JONI MOISANT WEYL



Analia Saban
Pitcher #2 (Spilled Interior) 2017
Stenciled ink monoprint
22 x 30" (55.9 x 76.2 cm)
Series of 34 unique works (#9)
AS17-247

\$ 3,500
frame 750



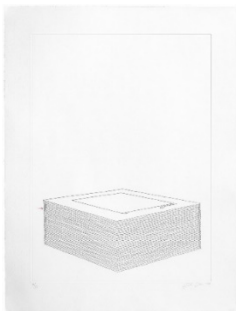
Analia Saban
Pitcher #3 (Spilled Interior) 2017
Stenciled ink monoprint
22 x 30" (55.9 x 76.2 cm)
Series of 34 unique works (#15)
AS17-248

3,500
frame 750



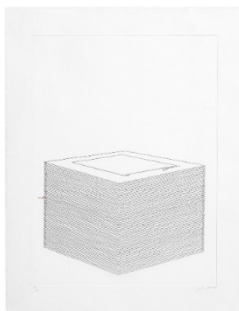
Analia Saban
Pressed Paint (Middle Gray) 2017
Acrylic paint pressed in linen
approximately 34 x 27" (86.4 x 68.6 cm)
A series of 26 unique works (#13)
AS17-254

7,500



Analia Saban
This One (Edition of 25) 2020
1-color etching with color pencil
36 7/8 x 28 1/4" (93.7 x 71.8 cm)
Edition of 25, #16
AS19-3574

3,500
frame 650

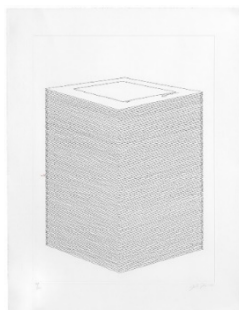


Analia Saban
This One (Edition of 50) 2020
1-color etching with color pencil
36 7/8 x 28 1/4" (93.7 x 71.8 cm)
Edition of 50, #16
AS19-3575

3,500
frame 650



GEMINI G.E.L. AT JONI MOISANT WEYL



Analia Saban

This One (Edition of 100) 2020
1-color etching with color pencil
36 7/8 x 28 1/4" (93.7 x 71.8 cm)
Edition of 100, #16
AS19-3576

\$ 3,500
frame 650



Analia Saban

Electric Toothbrush (One-Continuous Line) 2016
1-color aquatint
54 1/2 x 41 1/2" (138.4 x 105.4 cm)
Edition of 18, #11
AS15-3542

7,000
frame 900



Anni Albers

TR II 1970
3-color lithograph
22 x 23 1/2" (55.9 x 59.7 cm)
Edition of 45
AA70-216

6,000*



Ann Hamilton

Page 81, 2017
Unique cloth and word collage on book endpaper
unframed 8 1/8 x 5 1/4" (20.6 x 13.3 cm)
framed 16 3/4 x 13 7/8" (42.5 x 35.2 cm)
A series of unique works (#81)
AH17-251

6,000
framed



Dorothea Rockburne

Melencolia 1983
6-color lithograph on Transpagra, printed both
sides, mounted on 100% ragboard
31 3/4 x 39" (80.6 x 99.1 cm)
Edition of 40, PP II
DR81-1018

POR



GEMINI G.E.L. *AT* JONI MOISANT WEYL



Susan Rothenberg

\$ 1,800 – 4,800

17 Heads 2003

Cast solid sterling silver

Approximately 1 to 4" (2.54-10.16 cm) in scale

Editions of 6

SR02-2189 through SR02-2205

*#17 available only with purchase of complete set



Ann Hamilton

8,000

gauge (blue) 2007

frame 1,000

2-color lithograph/screenprint

38 1/4 x 56" (97.2 x 142.2 cm)

Edition of 16, #11

AH07-1556



Ann Hamilton

4,800

Green-barred Woodpecker 2021

frame 850

6-color lithograph, two panels

overall 36 x 42 5/8" (91.4 x 108.3 cm)

Edition of 30, #27

AH15-1637



Ann Hamilton

3,600

visite vi 2009

frame 900

Lithographic chine-collé on screenprint, with
collaged fabric

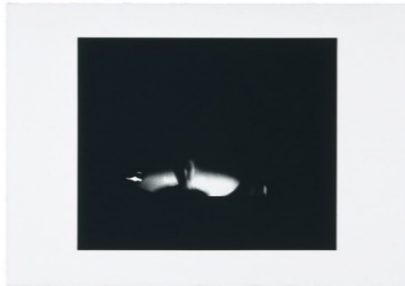
55 x 29 1/2" (139.7 x 74.9 cm)

Edition of 25, #14

AH09-4005



GEMINI G.E.L. AT JONI MOISANT WEYL



Ann Hamilton

face...bobby 2003
1-color photo-gravure
29 1/2 x 42" (74.9 x 106.7 cm)
Edition of 20, #11
AH03-3350

1,200
frame 500



Ann Hamilton

[#6] and [#7] from "reach" 2005
Series of paired, cast-steel and rusted spoons
28 x 2" (71.1 x 5.1 cm)
Editions of 15, #10
AH04-2209 & AH04-2210

10,000



Ann Hamilton

score 2007
2 cast-resin ear trumpets and unique grouping of 6
prints housed in wooden writing desk
7 x 26 x 26" (17.8 x 66 x 66 cm)
Edition of 15, #8
AH06-2217

12,000



Sophie Calle

The Address Book 2009
Portfolio of 28 prints in screenprinted binder,
with 3 related prints
15 1/4 x 12 5/8" (38.7 x 32.1 cm)
Edition of 45, #22
SC09-2220

12,000



Vija Celmins

Night Sky 3 2002
1-color photogravure/aquatint/ drypoint
19 3/4 x 23 3/4" (50.2 x 60.3 cm)
Edition of 65, #5
VC02-3337

POR



GEMINI G.E.L. AT JONI MOISANT WEYL



Vija Celmins

Night Sky 2 (Reversed) 2002
3-color photogravure, aquatint,
photoetching, drypoint
20 3/4 x 24 1/2" (52.7 x 62.2 cm)
Edition of 65, #21
VC02-3336

\$ 9,000*
frame 950



Vija Celmins

Untitled (Web 4) 2002
1-color photogravure, aquatint, drypoint
20 1/2 x 24 1/4" (52.1 x 61.6 cm)
Edition of 65, #7
VC02-3335

18,000*
frame 950



Toba Khedoori

Untitled (grass) 2022
1-color etching with chine colle
77 7/8 x 50 1/2" (197.8 x 128.3 cm)
Edition of 38, #25
TK21-3599

35,000
frame 4,800



Toba Khedoori

Untitled (branches) 2020
3-color lithograph
35 3/8 x 45" (89.9 x 114.3 cm)
Edition of 32, #12
TK19-1678

POR



GEMINI G.E.L. AT JONI MOISANT WEYL



Ranjani Shettar

POR

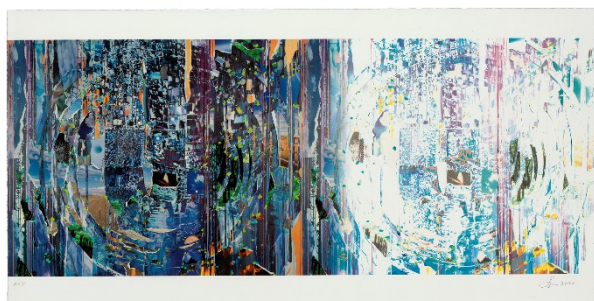
Alae alae 2021

8-color woodcut, screenprint, die-cut and folded
15 x 13" (38.1 x 33 cm)

Edition of 60

RSH19-1673

Available as part of *The MET 150 Print Portfolio*.
Please ask for more information.



Sarah Sze

POR

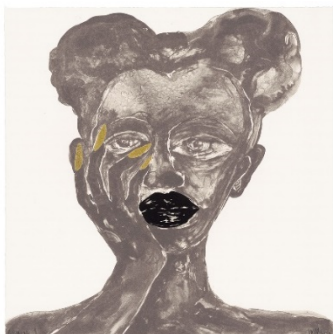
Papillon 2021

13-color screenprint with embossment
15 x 30" (38.1 x 76.2 cm)

Edition of 60

SS20-5438

Available as part of *The MET 150 Print Portfolio*.
Please ask for more information.



Wangechi Mutu

POR

girl 2021

4-color lithograph/screenprint with
hand-applied gold pigment
15 x 15" (38.1 x 38.1 cm)

Edition of 60

WM20-1677

Available as part of *The MET 150 Print Portfolio*.
Please ask for more information.





GEMINI G.E.L. AT JONI MOISANT WEYL



Susan Rothenberg
Puppet Series #1 2008
1-color mezzotint
16 1/2 x 16" (41.9 x 40.6 cm)
Edition of 50, #17
SR08-3434

1,600
frame 350



Susan Rothenberg
Spinning (State) 2006
1-color lithograph
22 x 17 1/2" (55.9 x 44.5 cm)
Edition of 24, #12
SR86-1127A

\$ 2,000
frame 300



Susan Rothenberg
Tilting 1986
4-color woodcut/lithograph
54 x 57 1/4" (137.2 x 145.4 cm)
Edition of 46
SR86-1128

7,500



Cecily Brown
Aujourd'hui Rose 2005
4-color lithograph
39 x 29 1/2" (99.1 x 74.9 cm)
Edition of 75, #52
CBR05-1528

2,800
frame 800