



GEMINI G.E.L. AT JONI MOISANT WEYL

**JOHN BALDESSARI**

April 18 – June 1, 2013

*Eight Soups*, 2012

Color screenprints

Each 38 x 24 1/4" (96.5 x 61.6 cm)

Editions of 50



PEA  
SOUP

**Eight Soups: Pea Soup**  
JBa12-5352



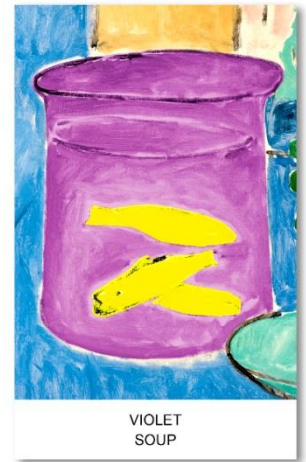
BLACK BEAN  
SOUP

**Eight Soups: Black Bean Soup**  
JBa12-5351



CARROT  
SOUP

**Eight Soups: Carrot Soup**  
JBa12-5356



VIOLET  
SOUP

**Eight Soups: Violet Soup**  
JBa12-5355



TOMATO  
SOUP

**Eight Soups: Tomato Soup**  
JBa12-5354



WHITE TRUFFLE  
SOUP

**Eight Soups: White Truffle Soup**  
JBa12-5353



BLUEBERRY  
SOUP

**Eight Soups: Blueberry Soup**  
JBa12-5350



CORN  
SOUP

**Eight Soups: Corn Soup**  
JBa12-5357



GEMINI G.E.L. AT JONI MOISANT WEYL

**JOHN BALDESSARI**

April 18 – June 1, 2013



**Noses & Ears, Etc.: The Gemini Series: Face with Nose and (Green) Ear, 2006**

3-layer, 6-color screenprint construction  
(mounted to Sintra and hand-cut), framed  
34 3/4 x 62 3/4 x 3" (88.3 x 159.4 x 7.6 cm)  
Edition of 45, #24  
JBA06-5309



**Noses & Ears, Etc.: The Gemini Series: Two Faces, One with Nose and Military Ribbons; One with (Blue) Nose and Tie, 2006**

3-layer, 14-color screenprint construction  
(mounted to Sintra and hand-cut), framed  
34 3/4 x 36 3/4 x 3" (88.3 x 93.3 x 7.6 cm)  
Edition of 45, #24  
JBA06-5310



**Foot and Stocking (With Big Toe Exposed): Shelly, 2010**

8-color screenprint with fabric and paper collage  
50 x 33" (127.0 x 83.8 cm)  
Edition of 45, #18  
JBA10-5334

*Nose/Silhouette Series, 2010*

Screenprint/lithographs

Each 18 x 14" (45.7 x 35.6 cm)

Editions of 50



**Nose/Silhouette:  
Orange**  
1-color lithograph/  
1-color screenprint  
JBa10-5340



**Nose/Silhouette:  
Blue**  
1-color lithograph/  
1-color screenprint  
JBa10-5337



**Nose/Silhouette:  
Red**  
1-color lithograph/  
1-color screenprint  
JBa10-5339



**Nose/Silhouette:  
Yellow**  
4-color lithograph/  
1-color screenprint  
JBa10-5341



**Nose/Silhouette:  
Violet**  
4-color lithograph/  
1-color screenprint  
JBa10-5342



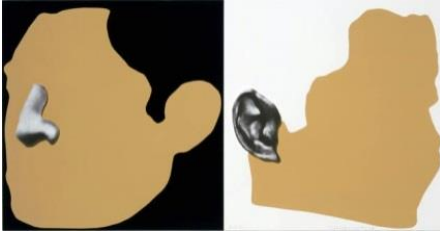
**Nose/Silhouette:  
Green**  
1-color lithograph/  
1-color screenprint  
JBa10-5338



GEMINI G.E.L. AT JONI MOISANT WEYL

**JOHN BALDESSARI**

April 18 – June 1, 2013



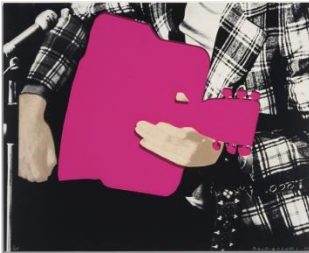
**Noses & Ears, Etc.: The Gemini Series: Two Profiles, One with Nose (B&W); One with Ear (B&W), 2006**

2-layer, 7-color screenprint construction  
(mounted to Sintra and hand-cut), framed  
34 7/8 x 62 3/8 x 3" (88.3 x 158.8 x 7.6 cm)  
Edition of 45, #7  
JBA06-5307



**Two Opponents (Blue & Yellow), 2004**

8-color screenprint  
12 x 12" (30.5 x 30.5 cm)  
Edition of 165, #115  
JBA04-5293



**Person With Guitar (Pink), 2004**

3-layer, 5-color screenprint construction  
(mounted to Sintra and hand-cut), framed  
34 1/2 x 42 x 3" (87.6 x 106.7 x 7.62 cm)  
Edition of 45  
JBA04-5297

*On view in the project space*



**God Nose, 2007**

Cast aluminum, hand-painted  
36 x 37 x 6" (91.4 x 94.0 x 15.2 cm)  
Edition of 25  
JBA07-2219



---

GEMINI G.E.L. AT JONI MOISANT WEYL

**JOHN BALDESSARI**

April 18 – June 1, 2013

---

*Additional Works – please ask to view*



**Jump (with Volcano), 1994-2012**

9-color lithograph/screenprint

48 x 24" (121.9 x 61.0 cm)

Edition of 56, #16

JBA91-1267