



GEMINI G.E.L. AT JONI MOISANT WEYL

**EXUBERANCE UNBOUND: ELIZABETH MURRAY AT GEMINI G.E.L 1993-2006**

**SEPTEMBER 12 – OCTOBER 19, 2013**



**BODY AND SOUL 2001**  
3-dimensional, 16-color lithograph/screenprint,  
hand-cut and collaged  
framed 46 x 46 x 5 1/2" (116.8 x 116.8 x 14.0 cm)  
Edition of 35, #29  
EM01-1480



**LEAF from DICTIONARY SERIES 1994**  
2-color etching/screenprint with unique  
hand-coloring and painting by the artist  
15 1/2 x 15 1/4" (39.4 x 38.7 cm)  
Series of 11 unique works  
EM94-184 (#4)



**PLEAT from DICTIONARY SERIES 1994**  
2-color etching/screenprint with unique  
hand-coloring and painting by the artist  
17 1/8 x 15 5/8" (43.5 x 39.7 cm)  
Series of 8 unique works  
EM94-183 (#7)



**JOE from DICTIONARY SERIES 1994**  
2-color etching/screenprint with unique  
hand-coloring and painting by the artist  
17 7/8 x 16 3/8" (45.4 x 41.6 cm)  
Series of 7 unique works  
EM94-186 (#2)



GEMINI G.E.L. AT JONI MOISANT WEYL

**EXUBERANCE UNBOUND: ELIZABETH MURRAY AT GEMINI G.E.L 1993-2006**

**SEPTEMBER 12 – OCTOBER 19, 2013**



**BONGO** from SWEETZER SUITE 2006  
3-dimensional assemblage of hand-carved foam,  
hand-painted by the artist  
37 x 29" (94.0 x 73.7 cm)  
Series of 16 unique works  
EM06-217 (#4)



**WHO WANTS** from ROOFTOPS WITH FLYING GEESE 2003  
3-dimensional multi-colored lithograph/screenprint,  
cut, collaged and hand-painted by the artist  
framed 50 x 47 1/2 x 6" (127.0 x 120.7 x 15.2 cm)  
Series of 6 unique works  
EM03-214 (#5)



**ST. MARKS** from THE METROPOLITAN SERIES 2005  
3-dimensional paper construction: collage and hand-coloring  
by the artist over multi-colored lithograph,  
mounted onto ragboard  
framed 28 3/4 x 35 3/4 x 3" (73.0 x 90.8 x 7.6 cm)  
Series of 24 unique works  
EM04-216 (#14)



GEMINI G.E.L. AT JONI MOISANT WEYL

**EXUBERANCE UNBOUND: ELIZABETH MURRAY AT GEMINI G.E.L 1993-2006**

**SEPTEMBER 12 – OCTOBER 19, 2013**



WOOSTER from THE METROPOLITAN SERIES 2005  
3-dimensional paper construction: collage and hand-coloring  
by the artist over multi-colored lithograph,  
mounted onto ragboard  
framed 28 3/4 x 35 3/4 x 3" (73.0 x 90.8 x 7.6 cm)  
Series of 24 unique works  
EM04-216 (#22)



SOMETHING 2002  
8-color lithograph  
16 x 14" (40.6 x 35.6 cm)  
Edition of 45, #37  
EM01-1483



DEEP BLUE C 2001  
14-color lithograph/screenprint, hand-cut  
29 1/4 x 44 1/4" (74.3 x 112.4 cm)  
Created for Foundation for Art and Preservation in Embassies  
Edition of 50 plus 10 Special Proofs, SP 9  
EM01-1479



RADISH 2001  
3-dimensional, 13-color lithograph/screenprint,  
hand-cut and collaged  
framed 24 x 26 x 5 1/2" (61.0 x 66.0 x 14.0 cm)  
Edition of 35, #34  
EM01-1482



GEMINI G.E.L. AT JONI MOISANT WEYL

**EXUBERANCE UNBOUND: ELIZABETH MURRAY AT GEMINI G.E.L 1993-2006**

**SEPTEMBER 12 – OCTOBER 19, 2013**



FALLING LEAF 1995  
5-color intaglio  
12 3/4 x 10 1/2" (32.4 x 26.7 cm)  
Edition of 43, #35  
EM94-3221



DEEP NIGHT 1995  
4-color intaglio  
12 3/4 x 10 1/2" (32.4 x 26.7 cm)  
Edition of 44, #43  
EM94-3222



FOGGY DAY 1995  
4-color intaglio  
12 3/4 x 10 1/2" (32.4 x 26.7 cm)  
Edition of 46, #42  
EM94-3223



DEEP BITE 1995  
4-color intaglio  
12 3/4 x 10 1/2" (32.4 x 26.7 cm)  
Edition of 40, #38  
EM94-3224



LULU LEAPS 1995  
5-color intaglio  
12 3/4 x 10 1/2" (32.4 x 26.7 cm)  
Edition of 39, #34  
EM94-3220



GEMINI G.E.L. AT JONI MOISANT WEYL

**EXUBERANCE UNBOUND: ELIZABETH MURRAY AT GEMINI G.E.L 1993-2006**

**SEPTEMBER 12 – OCTOBER 19, 2013**



WHAZZAT #20 1996  
Pastel over collaged lithograph, signed on verso  
framed 42 1/4 x 32 1/4 x 2" (107.3 x 81.9 x 5.1 cm)  
Series of unique works  
EM96-212



STEVE'S SPECIAL from CROSSING 1999  
3-dimensional, hand-colored paper construction,  
mounted onto 4-ply museum board  
framed 19 1/2 x 30 x 4" (49.5 x 76.2 x 10.2 cm)  
Series of unique works  
EM99-2185 (#44)



IT HAD TO BE YOU from KNOTTING 1999  
3-dimensional, hand-colored paper construction,  
mounted onto 4-ply museum board  
framed 26 x 19 1/2 x 4" (66.0 x 49.5 x 10.2 cm)  
Series of unique works  
EM99-2186 (#41)



EVERY TIME WE SAY GOODBYE from  
ROOFTOPS WITH FLYING GEESE 2003  
3-dimensional multi-colored lithograph/screenprint,  
cut, collaged & handpainted by the artist  
framed 31 x 31 x 5 1/2" (78.7 x 78.7 x 14.0 cm)  
Series of 13 unique works  
EM03-215 (#4)



GEMINI G.E.L. AT JONI MOISANT WEYL

**EXUBERANCE UNBOUND: ELIZABETH MURRAY AT GEMINI G.E.L 1993-2006**

**SEPTEMBER 12 – OCTOBER 19, 2013**



tybid 2004  
3-color lithograph  
Created to benefit ACT  
16 x 12 3/4" (40.6 x 32.4 cm)  
Edition of 150 plus 26 Artist Proofs, AP 19/26  
EM04-1508

**PROJECT SPACE**



TOE TWO 1994  
2-color screenprint  
Created to benefit the Archives of American Art  
16 x 14 1/2" (40.6 x 36.8 cm)  
Edition of 200 plus 40 Artist Proofs, AP 34/40  
EM94-5207



ADE from THIRTY-EIGHT 1993  
3-dimensional, 23-color lithograph/screenprint construction with  
unique pastel applications by the artist, signed on verso  
framed 35 1/2 x 29 1/2 x 3 3/4" (90.2 x 74.9 x 9.5cm)  
Series of 38 unique works  
EM93-179 (#6)



GEMINI G.E.L. AT JONI MOISANT WEYL

**EXUBERANCE UNBOUND: ELIZABETH MURRAY AT GEMINI G.E.L 1993-2006**

**SEPTEMBER 12 – OCTOBER 19, 2013**



FLING 1997  
8-color lithograph/8-color screenprint  
36 x 27" (91.4 x 68.6 cm)  
Edition of 40, #36  
EM93-1345



CAPREE 2001  
3-dimensional, 11-color lithograph/screenprint,  
hand-cut and collaged  
framed 30 1/2 x 30 1/2 x 5" (77.5 x 77.5 x 12.7 cm)  
Edition of 35, #21  
EM01-1481



RED VIOLET 1995  
9-color lithograph/silkscreen/intaglio  
16 3/4 x 15 3/8" (42.5 x 39.1 cm)  
Edition of 59, #49  
EM94-1368



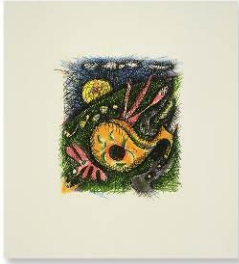
DISGUISE 1995  
8-color lithograph/silkscreen/intaglio  
15 7/8 x 16 3/8" (40.3 x 39.1 cm)  
Edition of 58, #33  
EM94-1369



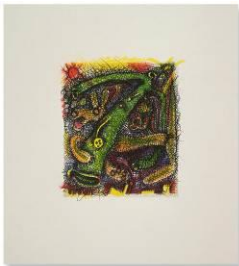
GEMINI G.E.L. AT JONI MOISANT WEYL

**EXUBERANCE UNBOUND: ELIZABETH MURRAY AT GEMINI G.E.L 1993-2006**

**SEPTEMBER 12 – OCTOBER 19, 2013**



NIGHT AND DAY 1995  
8-color lithograph/silkscreen/intaglio  
16 3/4 x 15 3/8" (42.5 x 39.1 cm)  
Edition of 66, #33  
EM94-1370



SKYLINE 1995  
10-color lithograph/silkscreen/intaglio  
16 3/4 x 15 3/8" (42.5 x 39.1 cm)  
Edition of 61, #34  
EM94-1372



FLYING A 1995  
8-color lithograph/silkscreen/intaglio  
16 3/4 x 15 3/8" (42.5 x 39.1 cm)  
Edition of 67, #33  
EM94-1371





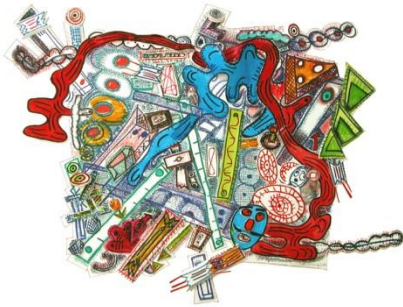
GEMINI G.E.L. AT JONI MOISANT WEYL

**EXUBERANCE UNBOUND: ELIZABETH MURRAY AT GEMINI G.E.L 1993-2006**

**SEPTEMBER 12 – OCTOBER 19, 2013**

**ADDITIONAL WORKS**

please ask to view



53RD from THE METROPOLITAN SERIES 2005  
3-dimensional paper construction: collage & hand-coloring by the artist over multi-colored lithograph, mounted onto ragboard  
framed 31 x 38 x 4" (78.7 x 96.5 x 10.2 cm)  
Series of 24 unique works  
EM04-216 (#21)



STRAIGHT NO CHASER from CROSSING 1999  
3-dimensional, hand-colored paper construction, mounted onto 4-ply museum board  
framed 19 1/2 x 30 x 4" (49.5 x 76.2 x 10.2 cm)  
Series of unique works  
EM99-2185 (#31)