



GEMINI G.E.L. AT JONI MOISANT WEYL

June 6 – July 3, 2013

MAKING THEIR MARK: THE FAB FIVE AT GEMINI

Works by Johns, Lichtenstein, Oldenburg, Rauschenberg, and Stella

Roy Lichtenstein

Haystack #1 - #7, 1969

Complete set of seven prints

Each 20 5/8 x 30 3/4" (52.4 x 78.1 cm)

Editions of 100, set AP VIII

RL69-231-267



Jasper Johns

Land's End, 1979

1-color lithograph

52 x 36" (132.1 x 91.4 cm)

Edition of 70

JJ78-845



Robert Rauschenberg

Scent, 1974

Offset lithograph transferred to collage of paper

bags and fabric

86 x 50" (218.4 x 127 cm)

Edition of 30, #8

RR74-692





GEMINI G.E.L. AT JONI MOISANT WEYL

June 6 – July 3, 2013

MAKING THEIR MARK: THE FAB FIVE AT GEMINI

Works by Johns, Lichtenstein, Oldenburg, Rauschenberg, and Stella

Robert Rauschenberg

Test Stone #1, 1967
1-color lithograph
18 x 14" (45.7 x 35.6 cm)
Edition of 77, #66
RR67-101



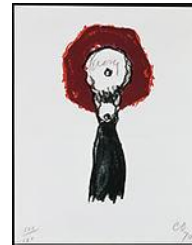
Claes Oldenburg

Profile Airflow, 1969
Wall relief of molded polyurethane over 2-color lithograph, aluminum frame
33 1/2 x 65 1/2" (85.1 x 166.4 cm)
Edition of 75, #3
CO68-304



Claes Oldenburg

Typewriter Eraser, 1970
3-color lithograph
12 1/4 x 9 1/2" (31.1 X 24.1 cm)
Edition of 100, AP XII
CO70-310



Frank Stella

Double Gray Scramble, 1973
150-color screenprint
29 x 50 3/4" (73.7 x 128.9 cm)
Edition of 100
FS72-5068





GEMINI G.E.L. AT JONI MOISANT WEYL

June 6 – July 3, 2013

MAKING THEIR MARK: THE FAB FIVE AT GEMINI

Works by Johns, Lichtenstein, Oldenburg, Rauschenberg, and Stella

Jasper Johns

Ale Cans, 1975

4-color lithograph

20 1/2 x 26" (52.1 x 66.0 cm)

Edition of 46, #18

JJ75-706



Roy Lichtenstein

Mirror (For Harvey Gantt), 1990

2-color screenprint

10 x 7 3/8" (25.4 x 18.7 cm)

Edition of 250, #213

RL90-1241



Frank Stella

Zambesi, 1967

1-color lithograph printed from aluminum

15 x 22" (38.1 x 55.9 cm)

Edition of 100, #67

FS67-144



Roy Lichtenstein

Mirror #9, 1972

5-color lithograph/screenprint

39 x 29 1/4" (99.1 x 74.3 cm)

Edition of 80, #24

RL72-437





GEMINI G.E.L. AT JONI MOISANT WEYL

June 6 – July 3, 2013

MAKING THEIR MARK: THE FAB FIVE AT GEMINI

Works by Johns, Lichtenstein, Oldenburg, Rauschenberg, and Stella

Roy Lichtenstein

La Sortie, 1991

6-color woodcut

58 1/2 x 81" (148.6 x 205.7 cm)

Edition of 60, #40

RL90-1221



Additional Works – Please Inquire

Claes Oldenburg

Perfume Atomizer on a Pillow, 1997

8-color lithograph with embossing

22 1/2 x 28" (57.2 x 71.1 cm)

Edition of 36, #22

CO92-1338



Roy Lichtenstein

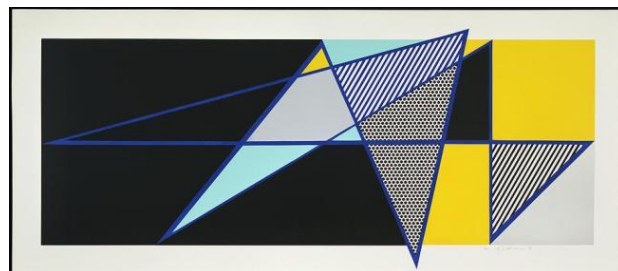
Imperfect 44 3/4 x 103", 1988

25-color woodcut/screenprint/collage

44 3/4 x 103" (113.7 x 261.6 cm)

Edition of 45, #36

RL87-1153





GEMINI G.E.L. AT JONI MOISANT WEYL

June 6 – July 3, 2013

MAKING THEIR MARK: THE FAB FIVE AT GEMINI

Works by Johns, Lichtenstein, Oldenburg, Rauschenberg, and Stella

Robert Rauschenberg

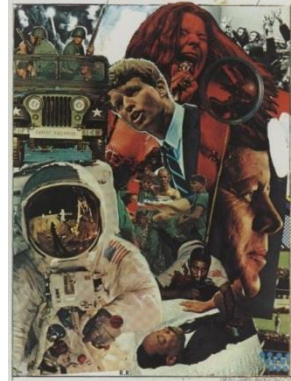
Signs, 1970

Screenprint in colors, on wove paper

43 x 34" (109.2 x 86.4 cm)

Edition of 250, #62

Published by Castelli Graphics, New York



Frank Stella

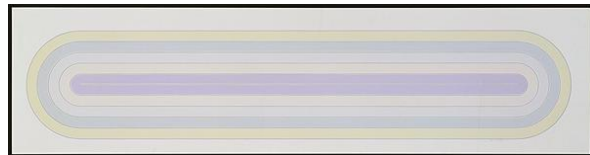
Del Mar, 1972

7-color screenprint

20 1/4 x 80 1/8" (51.4 x 203.5 cm)

Edition of 75, #12

FS72-5016



Frank Stella

Gezira, 1967

1-color lithograph printed from aluminum

15 x 22" (38.1 x 55.9 cm)

Edition of 100, #75

FS67-141

