



GEMINI G.E.L. AT JONI MOISANT WEYL

*First-Hand Evidence*

January 20 – February 23, 2011

**VIJA CELMINS**

**Retail**



UNTITLED (WEB 3) 2002  
1-color aquatint/drypoint  
21 x 24 1/2" Edition of 65  
VC02-3332



UNTITLED (WEB 4) 2002  
1-color photogravure/aquatint/drypoint  
20 1/2 x 24 1/4" Edition of 65  
VC02-3335



NIGHT SKY 3 2002  
1-color photogravure/aquatint/drypoint  
19 3/4 x 23 3/4" Edition of 65  
VC02-3337



NIGHT SKY 1 (REVERSED) 2002  
3-color photogravure/aquatint/photo-etching/drypoint  
21 x 24 1/2" Edition of 65  
VC02-3333



NIGHT SKY 2 (REVERSED) 2002  
3-color photogravure/aquatint/photo-etching/drypoint  
20 3/4 x 24 1/2" Edition of 65  
VC02-3336



GEMINI G.E.L. AT JONI MOISANT WEYL

**ROBERT GOBER**



UNTITLED 2000  
1-color lithograph  
38 x 46 1/2" Edition of 50  
RoGo00-1453



UNTITLED 2000  
1-color lithograph  
30 x 44 1/4" Edition of 50  
RoGo99-1436



UNTITLED 2000  
2-color lithograph/2-color screenprint/embossment,  
with hand drawing and erasure  
30 x 43 1/2" Edition of 47  
RoGo99-1437



UNTITLED 2002  
4-color lithograph  
51 x 36" Edition of 65  
RoGo01-1485

**BRICE MARDEN**



EAGLES MERE MUSES 2001  
1-color etching/4-color lithograph  
22 x 30" Edition of 45  
BM99-1431



GEMINI G.E.L. AT JONI MOISANT WEYL

**BRICE MARDEN - continued**



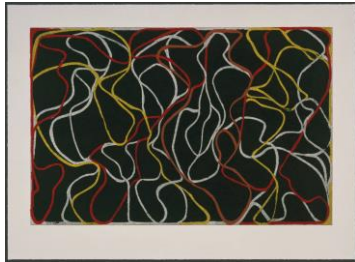
RED LINE MUSES 2001  
2-color etching/1-color lithograph  
22 x 30" Edition of 45  
BM99-1432



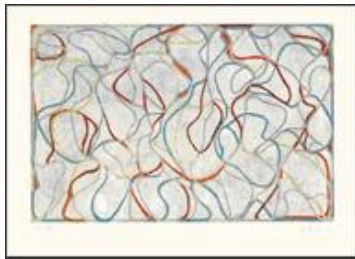
LINE MUSES 2001  
1-color etching/1-color lithograph  
22 x 30" Edition of 45  
BM99-1434



MUSES WITH GRAPHITE 2001  
1-color lithograph with pencil drawing  
22 x 30" Edition of 45  
BM99-1435



BEYOND EAGLES MERE 2001  
2-color etching/4-color lithograph  
22 x 30" Edition of 45  
BM99-1456



EAGLES MERE MUSES (STATE) 2002  
1-color etching/4-color lithograph  
22 x 30" Edition of 18  
BM99-1431A



GEMINI G.E.L. AT JONI MOISANT WEYL

**BRICE MARDEN - continued**



GREYER MUSES 2001  
2-color etching/1-color lithograph  
22 x 30" Edition of 45  
BM99-1433



RICHARD'S MUSE 2002  
2-color lithograph  
22 x 30" Edition of 45  
BM99-1458



L.A. MUSES 1999  
3-color etching/lithograph  
22 x 30" Edition of 80  
BM99-1430

**BRUCE NAUMAN**



UNTITLED (From "Fingers and Holes" series) 1994  
Monoprint produced from screen matrix  
(color of each print varies)  
35 1/4 x 35" 90 unique works  
BN94-182



VERSO RECTO (STATE I) 1998  
3-color lithograph/screenprint  
22 1/4 x 28 1/2" Edition of 50  
BN98-3266A



GEMINI G.E.L. AT JONI MOISANT WEYL

**BRUCE NAUMAN - continued**



VERSO RECTO (STATE II) 1998  
2-color lithograph/screenprint  
22 1/4 x 28 3/4" Edition of 50  
BN98-3266B



HOLDING HANDS ALL THUMBS 1998  
1-color etching  
22 1/2 x 28" Edition of 50  
BN98-3268



SOFT GROUND ETCHING - LAVENDER 2007  
2-color etching  
30 x 34" Edition of 50  
BN06-3407



SOFT GROUND ETCHING - YELLOW 2007  
2-color etching  
30 3/4 x 34" Edition of 50  
BN06-3408



SOFT GROUND ETCHING - GREEN 2007  
2-color etching  
29 x 34 1/4" Edition of 50  
BN06-3410



SOFT GROUND ETCHING - CORAL 2007  
2-color etching  
29 3/4 x 34" Edition of 50  
BN06-3411