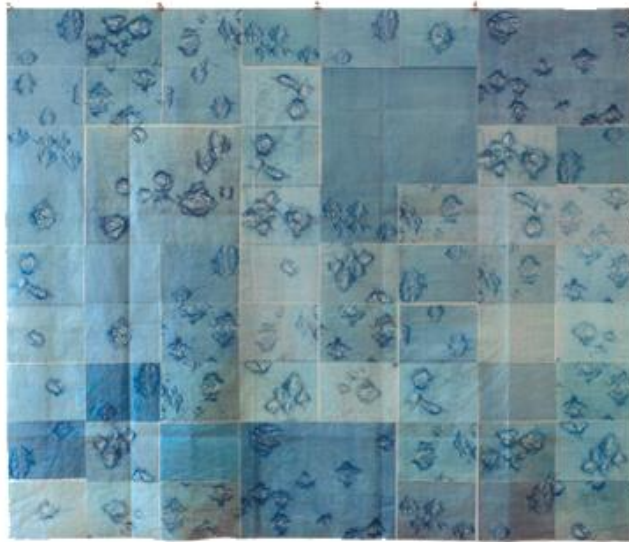




GEMINI G.E.L. ^{AT} JONI MOISANT WEYL

ann hamilton at gemini g.e.l.: a survey of works 2000-2012
december 14, 2012 – january 26, 2013



legend (AH07-221)
lithography collaged and mounted by the artist onto cotton
7' x 8' (approx.)
8 unique works



shell (AH07-2218)
felt coat
52" x 44"
Edition of 25



GEMINI G.E.L. ^{AT} JONI MOISANT WEYL

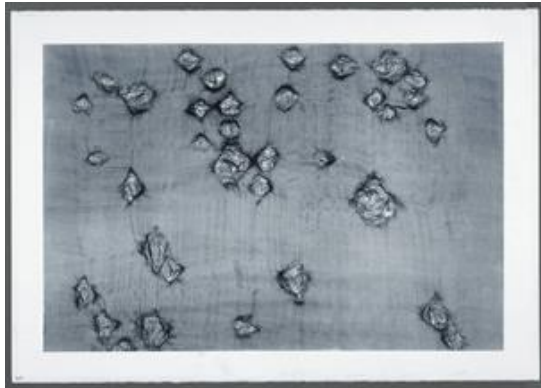
ann hamilton at gemini g.e.l.: a survey of works 2000-2012
december 14, 2012 – january 26, 2013



score (AH06-2217)
Ear trumpets and unique grouping of six prints
housed in a wooden writing desk
7" x 26" x 26"
Edition of 15



#6 and #7 from *reach*, 2005
Series of 7 paired, cast-steel and rusted spoons
#6: 28" x 2"; #7: 25 1/2" x 2 1/4"
(AH04-2209 and AH04-2210)



warp & weft II (AH07-1560)
1-color lithograph
37 7/8" x 56"
Edition of 10



gauge (brown) (AH07-1557)
2-color lithograph/screenprint
38 1/4" x 56"
Edition of 16



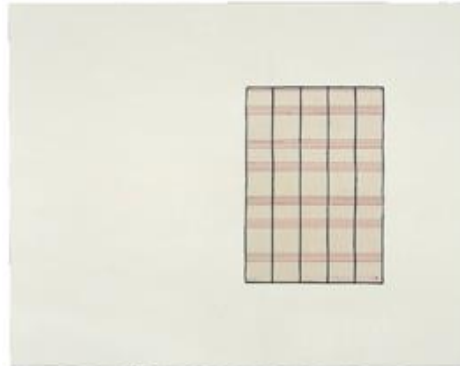
GEMINI G.E.L. ^{AI} JONI MOISANT WEYL

ann hamilton at gemini g.e.l.: a survey of works 2000-2012

december 14, 2012 – january 26, 2013



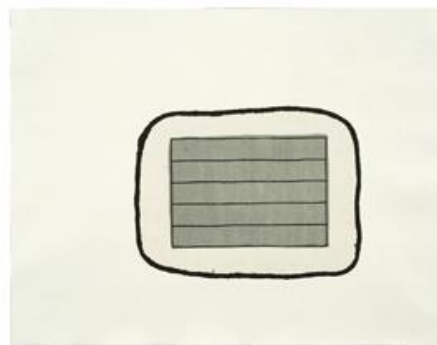
script b (AH07-1562)
1-color lithograph
20" x 15"
Edition of 35



script i (AH07-1568)
2-color lithograph
15" x 19"
Edition of 35



script j (AH07-3428)
2-color etching
29 1/2" x 23"
Edition of 35



script l (AH07-1570)
3-color lithograph
17 3/4" x 22 3/4"
Edition of 35

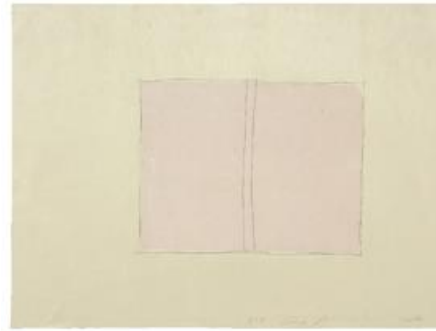


GEMINI G.E.L. ^{AI} JONI MOISANT WEYL

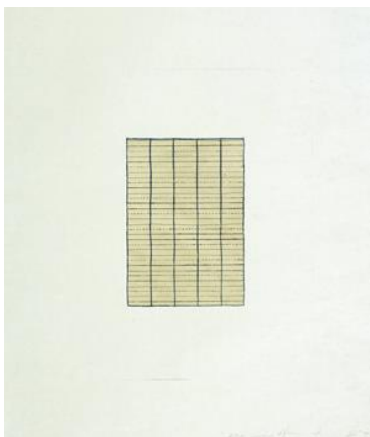
ann hamilton at gemini g.e.l.: a survey of works 2000-2012
december 14, 2012 – january 26, 2013



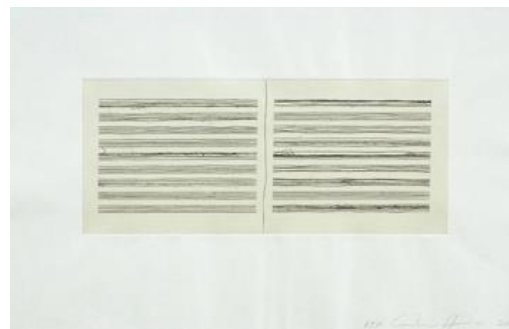
script m (AH07-1571)
4-color lithograph
23" x 18 1/4"
Edition of 35



script o (AH07-1573)
2-color lithograph
17" x 22 1/2"
Edition of 35



script q (AH07-3429)
2-color etching and chine-collé
21" x 18"
Edition of 35



script r (AH07-3430)
1-color etching
12 1/2" x 19 1/2"
Edition of 35



GEMINI G.E.L. ^{AT} JONI MOISANT WEYL

ann hamilton at gemini g.e.l.: a survey of works 2000-2012

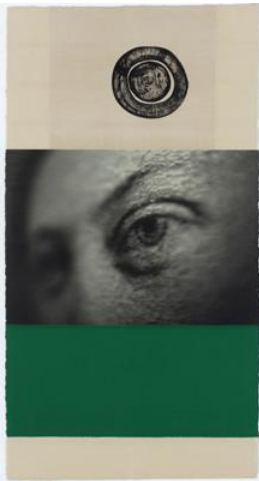
december 14, 2012 – january 26, 2013



ciliary 2010
Lithograph, fabric, bamboo and hardwood
dowel construction
Approx. diameter: 58" (147.3 cm)
19 unique works
AH09-223, #8



ciliary 2010
Lithograph, fabric, bamboo and hardwood
dowel construction
Approx. diameter: 58" (147.3 cm)
19 unique works
AH09-223, #8



visite ii, 2009
Lithographic chine-collé on screenprint,
with collaged fabric
55" x 29 1/2" (139.7 x 74.9 cm)
edition of 25
AH09-4001