



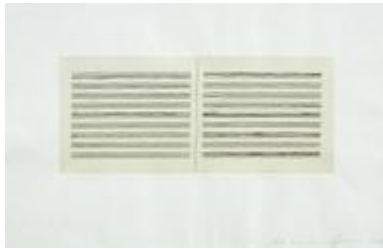
GEMINI G.E.L. <sup>AI</sup> JONI MOISANT WEYL

ann hamilton at gemini g.e.l.: a survey of works 2000-2012

december 14, 2012 – january 26, 2013



*script b*, 2008  
1-color lithograph with chine-collé  
20 x 15" (50.8 x 38.1 cm)  
edition of 35, #21  
AH07-1562



*script r*, 2008  
1-color etching with chine-collé  
12 1/2 x 19 1/2" (31.8 x 49.5 cm)  
edition of 35, #28  
AH07-3430



#6 and #7 from *reach*, 2005  
paired, cast-steel and rusted spoons,  
in linen-covered box  
#6: 28 x 2" (71.1 x 5.1 cm)  
#7: 25 1/2 x 2 1/4" (64.8 x 5.7 cm)  
editions of 15, #10  
AH04-2209 and AH04-2210

*please inquire for additional works in the series*



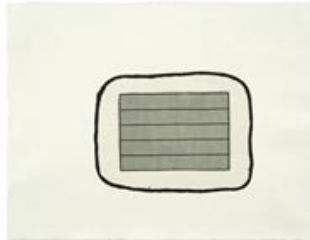
*legend*, 2007  
lithography collaged and mounted by the  
artist onto cotton, with linen-covered box  
7 x 8' (approx.) (2.13 x 2.44 m)  
8 unique works  
AH07-221 (#3)



GEMINI G.E.L. <sup>AT</sup> JONI MOISANT WEYL

ann hamilton at gemini g.e.l.: a survey of works 2000-2012

december 14, 2012 – january 26, 2013



*script l*, 2008  
3-color lithograph with chine-collé  
17 3/4 x 22 3/4" (45.1 x 57.8 cm)  
edition of 35, #22  
AH07-1570



*script q*, 2008  
2-color etching with chine-collé  
21 x 18" (53.3 x 45.7 cm)  
edition of 35, #16  
AH07-3429



*script i*, 2008  
2-color lithograph with chine-collé  
15 x 19" (38.1 x 48.3 cm)  
edition of 35, #16  
AH07-1568



*script j*, 2008  
2-color etching with chine-collé  
29 1/2 x 23" (74.9 x 58.4 cm)  
edition of 35, #16  
AH07-3428



*script m*, 2008  
4-color lithograph with chine-collé  
23 x 18 1/4" (58.4 x 46.4 cm)  
edition of 35, #21  
AH07-1571



GEMINI G.E.L. <sup>AT</sup> JONI MOISANT WEYL

ann hamilton at gemini g.e.l.: a survey of works 2000-2012

december 14, 2012 – january 26, 2013



*shell*, 2007  
felt coat  
52 x 44 x 6" (132.1 x 111.8 x 15.2 cm)  
edition of 25, #7 and #13  
AH07-2218

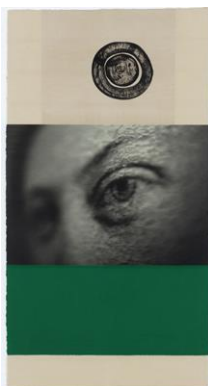


*script o*, 2008  
2-color lithograph with chine-collé  
17 x 22 1/2" (43.2 x 57.2 cm)  
edition of 35, #21  
AH07-1573



*visite vi*, 2009  
lithographic chine-collé on screenprint,  
with collaged fabric  
55 x 29 1/2" (139.7 x 74.9 cm)  
edition of 25, #14  
AH09-4005

*please inquire for additional works in the series*



*visite ii*, 2009  
lithographic chine-collé on screenprint,  
with collaged fabric  
55 x 29 1/2" (139.7 x 74.9 cm)  
edition of 25, #14  
AH09-4001

*please inquire for additional works in the series*



GEMINI G.E.L. <sup>AI</sup> JONI MOISANT WEYL

ann hamilton at gemini g.e.l.: a survey of works 2000-2012

december 14, 2012 – january 26, 2013



*ciliary*, 2010  
lithograph, fabric, bamboo and hardwood  
dowel construction  
approx. diameter: 58" (147.3 cm)  
series of 19 unique works  
AH09-223 (#5)

*please inquire for additional works in the series*



*face . . . susan*, 2003  
1-color photo-gravure  
29 1/2 x 42" (74.9 x 106.7 cm)  
edition of 20, #11  
AH03-3357



*face . . . bobby*, 2003  
1-color photo-gravure  
29 1/2 x 42" (74.9 x 106.7 cm)  
edition of 20, #11  
AH03-3350



*face . . . mr. innui*, 2003  
1-color photo-gravure  
29 1/2 x 42" (74.9 x 106.7 cm)  
edition of 20, #11  
AH03-3356



---

GEMINI G.E.L. <sup>AI</sup> JONI MOISANT WEYL

ann hamilton at gemini g.e.l.: a survey of works 2000-2012  
december 14, 2012 – january 26, 2013



*gauge (brown)*, 2007  
2-color lithograph/screenprint  
38 x 56" (96.5 x 142.2 cm)  
edition of 16, #14  
AH07-1557

*please inquire for additional works in the series*



GEMINI G.E.L. <sup>AI</sup> JONI MOISANT WEYL

ann hamilton at gemini g.e.l.: a survey of works 2000-2012

december 14, 2012 – january 26, 2013

project space



*score*, 2007

ear trumpets and unique grouping of six prints housed in a wooden writing desk  
7 x 26 x 26" (17.8 x 66 x 66 cm)

edition of 15, #8

AH06-2217



*wreathe*, 2001

blind debossment,  
signed and numbered on verso  
23 x 31" (58.4 x 78.7 cm)

edition of 45, #8

AH00-3309



*federal blue*, 2012

inkjet chine collé with collaged fabric on  
gampi paper  
19 x 14" (48.3 x 35.6 cm)

series of 8 unique works

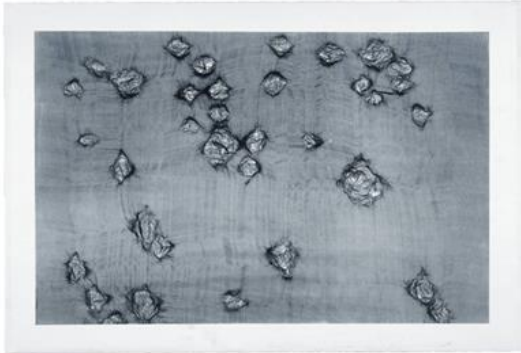
AH11-226 (#6)

*please inquire for additional works in the series*



GEMINI G.E.L. <sup>AT</sup> JONI MOISANT WEYL

ann hamilton at gemini g.e.l.: a survey of works 2000-2012  
december 14, 2012 – january 26, 2013



*warp & weft II*, 2007  
1-color lithograph  
38 1/2 x 56" (97.8 x 142.2 cm)  
edition of 10, #10  
AH07-1560

*please inquire for additional works in the series*



*ciliary*, 2010  
lithograph, fabric, bamboo and hardwood  
dowel construction  
approx. diameter: 58" (147.3 cm)  
series of 19 unique works  
AH09-223 (#11)

*please inquire for additional works in the series*