

GEMINI G.E.L.^{AT} JONI MOISANT WEYL

I F P D A
P R I N T F A I R
MARCH 27-30
BOOTH C03

VIP Preview

Thursday, March 27th 5-9pm

Public Hours

Friday, March 28th 11am-7pm

Saturday, March 29th 11am-7pm

Sunday, March 30th 11am-5pm

NEW & RECENT PUBLICATIONS:

Thomas Demand

Toba Khedoori

Richard Serra

+

SELECTED EDITIONS BY:

Roy Lichtenstein

Robert Rauschenberg

Ed Ruscha

*Featuring a special tribute to
Sidney B. Felsen and Richard Serra*

THOMAS DEMAND

Portals, 2024

A series of eleven multi-color lithographs with embossing
32 3/4 x 28 inches, each
Editions of 48
\$8,000 (each)

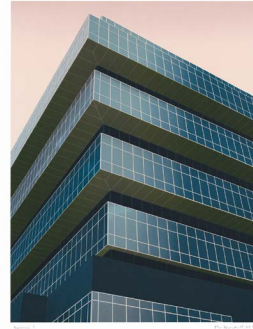
*next page: detail of *Intercontinental Bucharest*



Bobby Fischer's House



Diamond Princess



One Stamford Forum



Intercontinental Bucharest



TOBA KHEDOORI



Untitled 2, 2025, 1-color mezzotint, 20 7/8 x 21 1/2 inches, Edition of 35, \$8,000



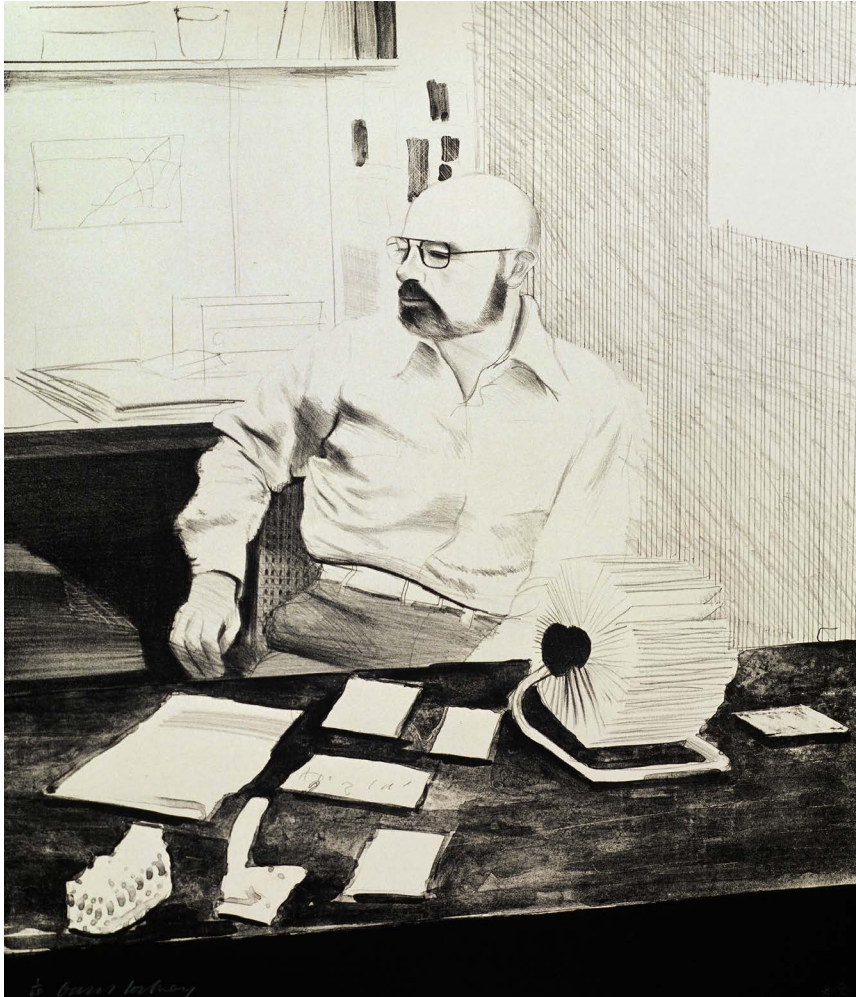
Untitled 3, 2025, 1-color mezzotint, 20 7/8 x 21 1/8 inches, Edition of 38 (projected), \$8,000



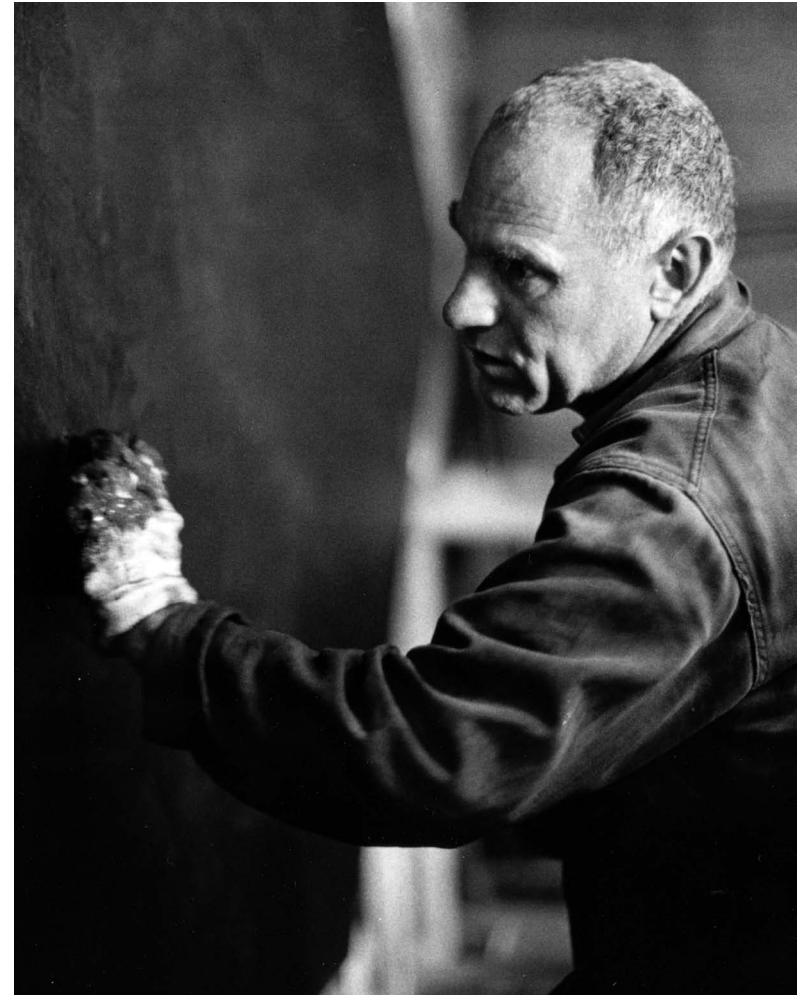
Toba Khedoori
Untitled (branches), 2020
1-color lithograph
33 5/8 x 45 inches
Edition of 32
Price on request
*detail next page



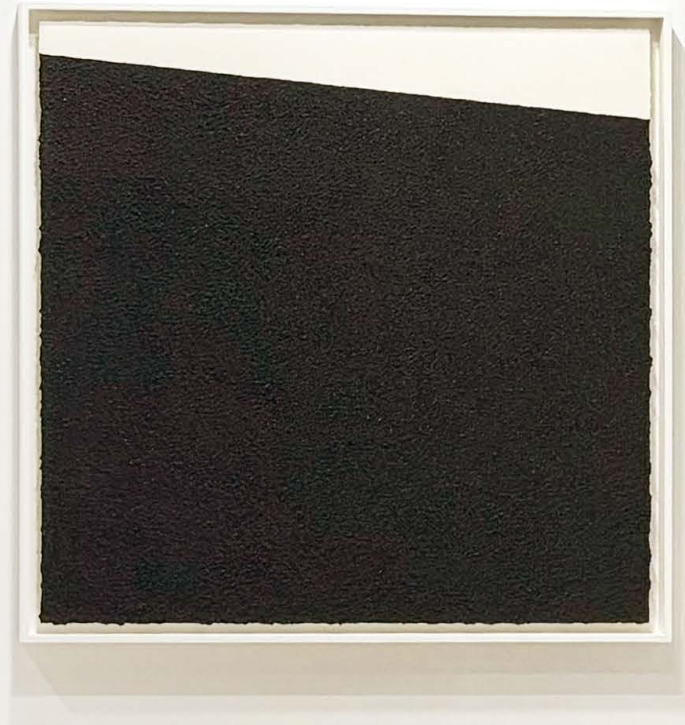
Featuring a special tribute to **Sidney B. Felsen** and **Richard Serra** – whose deep friendship and commitment to creating and publishing prints shaped not only the history of Gemini G.E.L. but also contemporary printmaking.



David Hockney, *Sidney in his Office*, 1977, 2-color lithograph, 24 x 20 3/4", Edition of 60



Richard Serra and a 'Round' of Paintstik © 1999 Sidney B. Felsen



Richard Serra

Hitchcock III, II 2024

2-color oil stick and silica

40 x 34 inches (left)

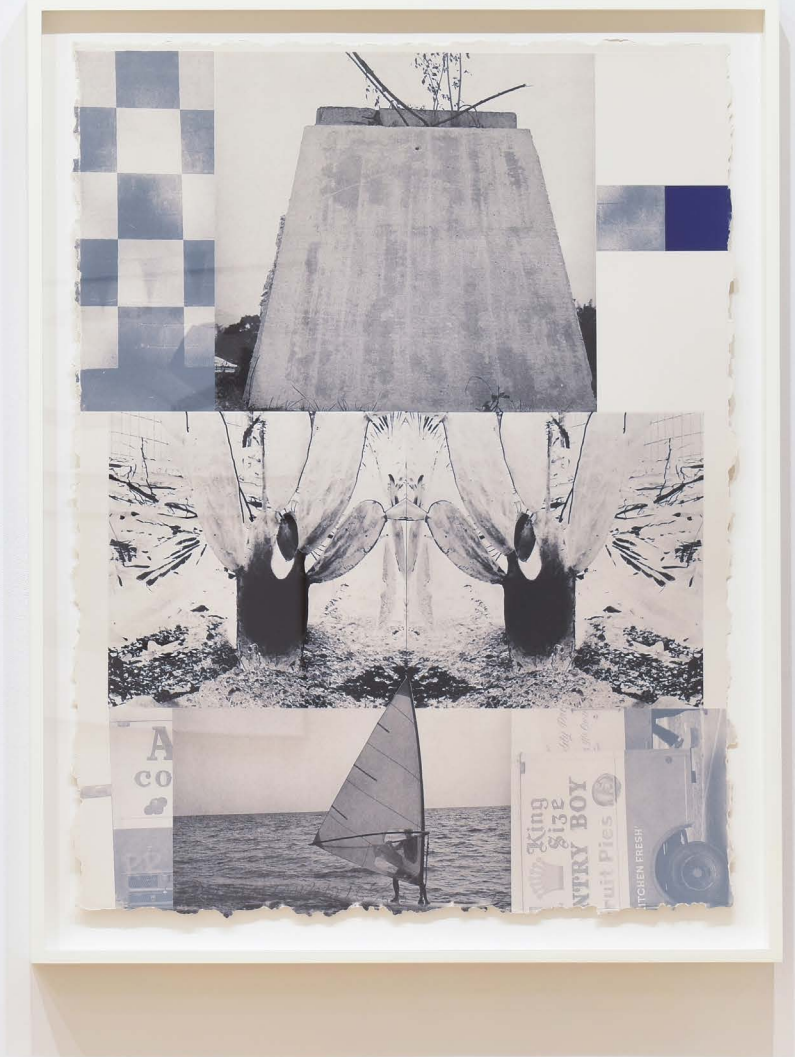
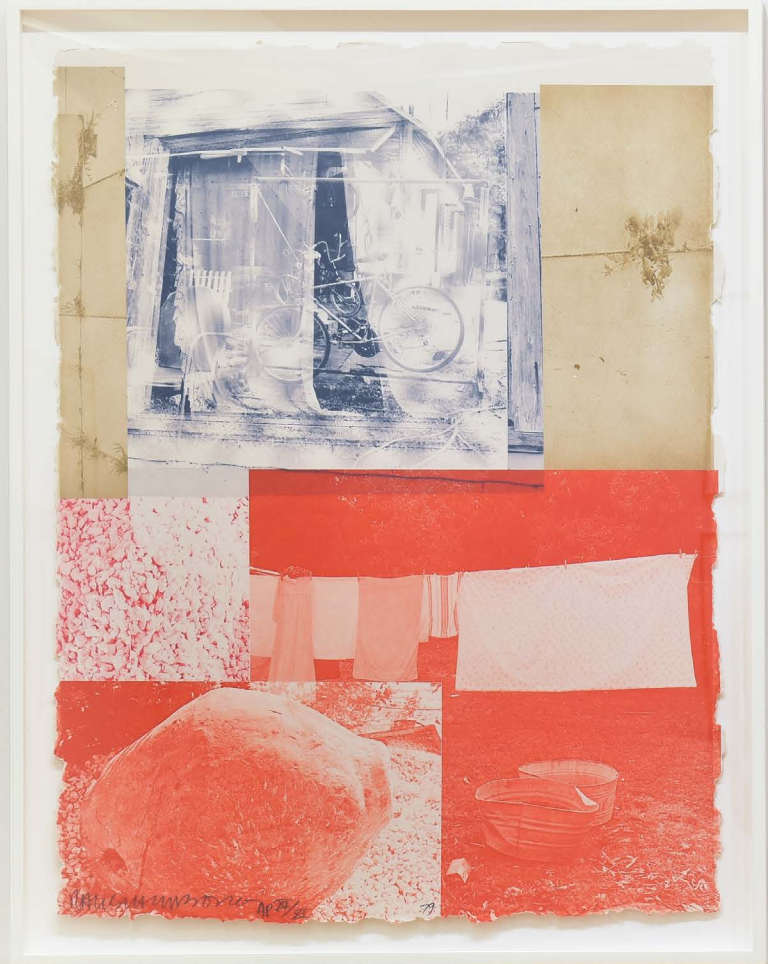
40 x 40 inches (right)

Editions of 56

\$21,850 (each, framed)

*detail of *Hitchcock III* next page





Robert Rauschenberg

Rookery Mounds - Rose Bay & Crystal, 1979

Multi-color lithographs

41 x 31 inches each

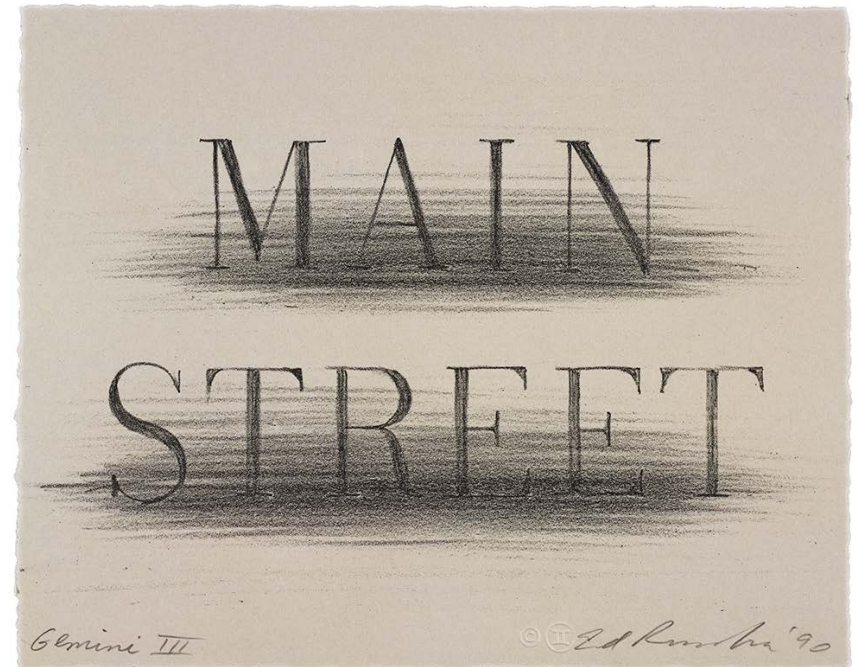
Editions of 54 & 55

Price on request

ED RUSCHA



Note, 2018
5-color screenprint on sandpaper
9 x 11 inches
Edition of 85
\$5,500



Main Street, 1990
1-color lithograph
8 1/4 x 10 1/4 inches
Edition of 250
\$6,500



Roy Lichtenstein

Modern Head #1, #2, #3, 1970

4-color woodcut (left)

2-color lithograph and zinc line-cut, embossed (middle)

1-color embossed linecut (right)

24 1/2 x 18 1/2 inches

Editions of 100

Price on request

*detail of *Modern Head #1* next page



24/100

of Lichtenstein 170 ©

GEMINI G.E.L.^{AT} JONI MOISANT WEYL

535 WEST 24TH STREET, 3RD FLOOR NEW YORK, NEW YORK 10011 212.249.3324 GEMINI@JONIWEYL.COM JONIWEYL.COM



GALLERY HOURS: 10AM- 6PM, TUESDAY - SATURDAY