



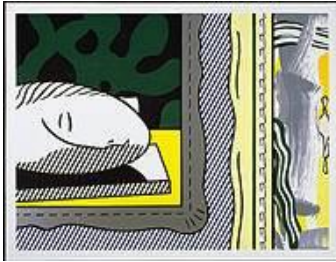
GEMINI G.E.L. <sup>AT</sup> JONI MOISANT WEYL

MEN ON MADISON  
December 14 – January 15, 2011

**ROY LICHTENSTEIN**



*LA SORTIE* 1991  
6-color woodcut  
58 1/2 x 81" Edition of 60  
RL90-1221



*TWO PAINTINGS: SLEEPING MUSE* 1984  
15-color woodcut/lithograph/screenprint  
37 3/4 x 48 7/8" Edition of 60  
RL83-1082

**MARK DI SUVERO**



*T'ANG* 1977  
Torch-cut steel, 5 pieces to be arranged  
and positioned  
closed: 14 7/8 x 12 7/8 x 5/8" Edition of 50  
MDS77-2041

**DAN FLAVIN**



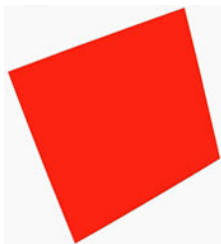
*(TO DON JUDD, COLORIST) 1-7* 1987  
Complete set of seven 1-color relief prints  
on handmade paper  
Each 29 x 41" Editions of 30  
DF86-1129-1135



GEMINI G.E.L. <sup>AT</sup> JONI MOISANT WEYL

MEN ON MADISON  
December 14 – January 15, 2011

**ELLSWORTH KELLY**



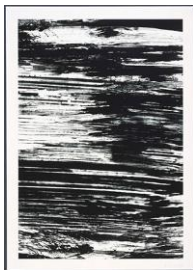
*UNTITLED (RED)* 2005  
1-color lithograph  
33 1/4 x 29 7/8" Edition of 50  
EK04-1525



*THE NILE* 2005  
1-color lithograph  
45 1/4 x 32" Edition of 25  
EK02-1486C



*THE THAMES* 2005  
1-color lithograph  
45 1/4 x 32" Edition of 25  
EK02-1486D



*THE AMAZON* 2005  
1-color lithograph  
45 1/4 x 32" Edition of 25  
EK02-1486E



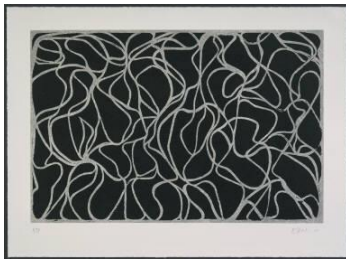
*THE MISSISSIPPI* 2005  
1-color lithograph  
45 1/4 x 32" Edition of 25  
EK02-1486F



GEMINI G.E.L. <sup>AT</sup> JONI MOISANT WEYL

MEN ON MADISON  
December 14 – January 15, 2011

**BRICE MARDEN**



*LINE MUSES* 2001  
1-color etching/1-color lithograph  
22 x 30" Edition of 45  
BM99-1434

**CLAES OLDENBURG**



*LETTER Q AS A BEACH HOUSE, WITH SAILBOAT* 1972  
15-color lithograph  
39 x 29 1/2" Edition of 100  
CO72-456



*GEOMETRIC MOUSE – SCALE C* 1971  
Moveable 3-dimensional object (black  
anodized aluminum)  
24 1/2 x 20" Edition of 120  
CO71-2011

**ROBERT RAUSCHENBERG**



*RINGER* 1974  
Offset lithograph and screenprint transferred to a  
collage of fabric and paper bag  
70 x 36" Edition of 31  
RR74-686



---

GEMINI G.E.L. <sup>AT</sup> JONI MOISANT WEYL

MEN ON MADISON  
December 14 – January 15, 2011

**RICHARD SERRA**



*DOUBLE LEVEL II* 2009  
1-color etching  
73 x 60" Edition of 22  
RS08-3451