



GEMINI G.E.L. ^{AI} JONI MOISANT WEYL

NOT ANOTHER SUMMER GROUP SHOW
Summer 2022

RICHARD TUTTLE



YELLOW CIRCLE 2018

Ceramic tile and vapor-coated polished steel
19 x 24 x 18" (48.3 x 61 x 45.7 cm)

Edition of 7, #6

Signed and numbered in pencil on ceramic tile adhered to underside of table-top

RT17-2236

\$ 14,000



PLANT GROWTH 2012

Ceramic earthenware

12 1/2 x 16 x 16" (31.8 x 40.6 x 40.6 cm)

Edition of 12, #6

RT12-228

10,000



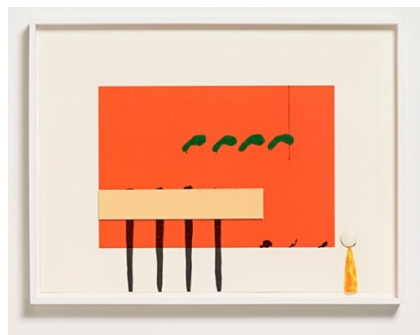
"PACIFIC SERIOUSLY" 2012

6-color spit bite, aquatint, chine-collé and paper pulp construction, each with unique hand-drawing by the artist
Framed: 20 1/4 x 25 1/4 x 3" (51.4 x 64.1 x 7.6 cm)

Series of 38 unique works, #17

RT11-224

6,000
frame 500



"FOR CASE HUDSON, PRINTER" 2013

Drypoint, woodblock with plastic and paper construction
17 7/8 x 24 (45.4 x 61 cm)

Series of 43 unique works, #17

RT12-227

5,000
frame 500



GEMINI G.E.L. ^{AI} JONI MOISANT WEYL

ELIZABETH MURRAY



"IT HAD TO BE YOU" (KNOTTING) 1999
Hand-colored paper construction, mounted onto
4-ply museum board
Frame: 26 x 19 1/2 x 4" (66 x 49.5 x 10.2 cm)
Series of 33 unique works
EM99-2186

\$ 12,000



"ST. MARKS" FROM THE METROPOLITAN SERIES 2005
Paper construction: collage & handcoloring by the artist over
multi-colored lithograph. Mounted onto ragboard
28 x 35 x 1 5/8" (71.1 x 88.9 x 4.1 cm)
A series of 24 unique works, #14
EM04-216

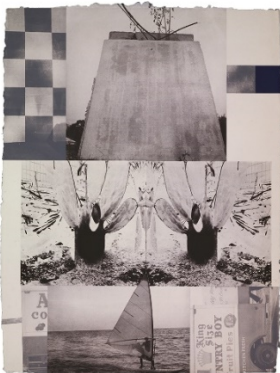
50,000

ROBERT RAUSCHENBERG



ROOKERY MOUNDS - ROSE BAY 1979
4-color lithograph
41 x 31" (104.1 x 78.7 cm)
Edition of 54, AP 11
RR79-899

NFS



ROOKERY MOUNDS - CRYSTAL 1979
3-color lithograph
41 x 31" (104.1 x 78.7 cm)
Edition of 55, #5
RR79-898

15,000
frame 960



GEMINI G.E.L. ^{AI} JONI MOISANT WEYL

BRICE MARDEN



RED LINE MUSES 2001
2-color etching/1-color lithograph
22 x 30" (55.9 x 76.2 cm)
Edition of 45, #8
BM99-1432

\$ 30,000
framed



GREYER MUSES 2001
2-color etching/1-color lithograph
22 x 30" (55.9 x 76.2 cm)
Edition of 45, #2
BM99-1433

30,000
framed

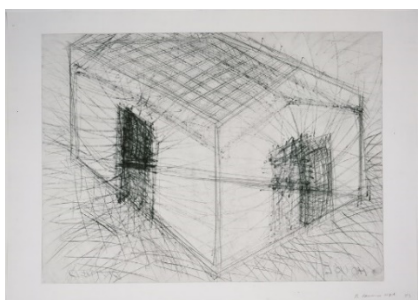
SAM FRANCIS



TOTEM 1983
1-color aquatint
37 3/4 x 19 3/4" (95.9 x 50.2 cm)
Edition of 29, AP 6
SF81-3053

6,500
framed

BRUCE NAUMAN



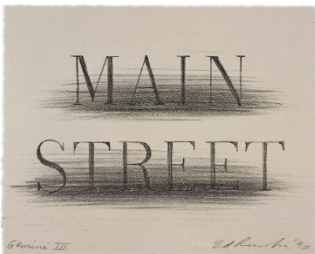
HOUSE DIVIDED 1985
1-color drypoint/etching
28 x 39 1/8" (71.1 x 99.4 cm)
Edition of 23, #7
BN83-3086

15,000
frame 1,000



GEMINI G.E.L. ^{AI} JONI MOISANT WEYL

ED RUSCHA



MAIN STREET 1990
1-color lithograph
8 1/4 x 10 1/4" (21 x 26 cm)
Edition of 250, #155
ER90-1244

\$ 5,000
frame 250

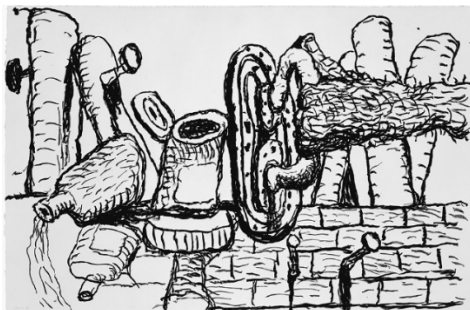
ELLSWORTH KELLY



COLOR SQUARES 3 2011
5-color lithograph
5 1/4 x 13 1/4" (13.3 x 33.7 cm)
Edition of 60, PP III
EK11-1601

POR

PHILIP GUSTON



REMAINS 1981
1-color lithograph, Estate Stamped
19 1/2 x 29 3/4" (49.5 x 75.6 cm)
Edition of 50, #17
PG79-936

9,000

SUSAN ROTHENBERG



BREATH-MAN 1986
4-color drypoint/woodcut/engraving
20 3/4 x 20 3/8" (52.7 x 51.8 cm)
Edition of 37, #37
SR86-3132

6,000
frame 580



GEMINI G.E.L. ^{AI} JONI MOISANT WEYL

ELIZABETH MURRAY



TOE TWO 1994
2-color screenprint
16 x 14 1/2" (40.6 x 36.8 cm)
Edition of 200, AP 34
EM94-5207

\$ 1,700
frame 450

To benefit the Archives of American Art

JOEL SHAPIRO



UP DOWN AROUND (b) 2011
10-color screenprint/lithograph
36 1/8 x 24" (91.8 x 61 cm)
Edition of 45, #16
JS11-5344

4,000
frame 700