



GEMINI G.E.L. ^{AI} JONI MOISANT WEYL

CLAES OLDENBURG
A SURVEY OF PRINT AND SCULPTURE EDITIONS

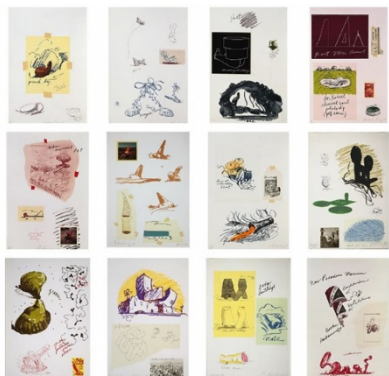
May 16 – September 14, 2019



Pizza/Palette 1996
12-color lithograph
29 3/8 x 38 1/2" (74.6 x 97.8 cm)
Edition of 100 plus 20 Artist Proofs, AP XV/XX
Published by Pace Editions



Apple Core – Spring 1990
5-color lithograph
41 x 31" (79.4 x 104.1 cm)
Edition of 57, #30
Published by Gemini G.E.L.
Gemini ID No. CO89-1211



Notes 1968
Portfolio of twenty-seven pages, including twelve lithographs and thirteen text pages, title page, and colophon printed by letterpress
Each sheet 22 11/16 x 15 3/4" (57.6 x 40 cm)
Editions of 100
Published by Gemini G.E.L.



GEMINI G.E.L. ^{AI} JONI MOISANT WEYL

CLAES OLDENBURG
A SURVEY OF PRINT AND SCULPTURE EDITIONS

May 16 – September 14, 2019



Geometric Mouse – Scale C 1971

Anodized aluminum sculpture
24 1/2 x 20" (9" ear) (62.2 x 50.8 cm)

Edition of 120, #115

Published by Gemini G.E.L.

Gemini ID No. CO71-2011



The Soap at Baton Rouge 1990

Multiple sculpture with first edition hardbound book

Soap: 3/4 x 4 3/4 x 2 3/4" (1.9 x 12.1 x 7 cm)

Edition of 250, #115

Published by Carl Solway Gallery



Geometric Mouse – Scale D 1971

Arrangeable paper object

17 1/2 x 14" (44.5 x 35.6 cm)

Unlimited edition

Published by Gemini G.E.L.

Gemini ID No. CO71-2011A



M.Mouse (with) 1 Ear (equals) Tea Bag

Blackboard Version (1965) 1973

2-color screenprint/lithograph,

wiped with talcum powder

12 x 9" (30.5 x 22.9 cm)

Edition of 300 plus 25 Artist Proofs, AP V

Published by Experiments in Art and Technology



M.Mouse (with) 1 Ear (equals) Tea Bag (1965) 1973

1-color lithograph

12 x 9" (30.5 x 22.9 cm)

Edition of 30, #24

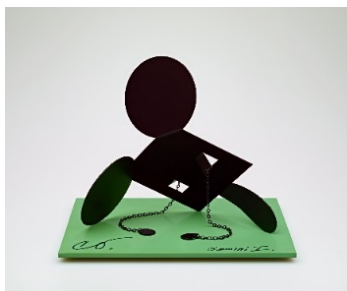
Published by the artist



GEMINI G.E.L. ^{AI} JONI MOISANT WEYL

CLAES OLDENBURG
A SURVEY OF PRINT AND SCULPTURE EDITIONS

May 16 – September 14, 2019



Geometric Mouse – Scale E, “Desktop” 2013

Painted aluminum sculpture
6 1/2 x 8 1/4 x 6 1/2” (16.5 x 21 x 16.5 cm)
Edition of 50, #48
Published by Gemini G.E.L.
Gemini ID No. CO13-2234



**Study for Sculpture in the Form of an Inverted Q:
Above and Below Ground** 1975

6-color lithograph/soft-ground etching/aquatint
13 7/8 x 11” (35.2 x 27.9 cm)
Edition of 100, #90
Published by Petersburg Press, for the Artists Benefit
for Attica Defense Fund



**Proposed Monument for Mill Rock, East River, NYC:
Slice of Strawberry Cheesecake** 1992

8-color soft-ground etching/aquatint
25 x 29 1/2” (63.5 x 75 cm)
Edition of 60 plus 10 Artist Proofs, AP I/X
Published by Aldo Crommelynck



Profiterole 1990

5-color lithograph
31 1/4 x 41” (79.4 x 104.1 cm)
Edition of 57 plus 12 Artist Proofs, AP II/XII
Published by Gemini G.E.L.
Gemini ID No. CO89-1208



GEMINI G.E.L. ^{AI} JONI MOISANT WEYL

CLAES OLDENBURG
A SURVEY OF PRINT AND SCULPTURE EDITIONS

May 16 – September 14, 2019



Cherry 1991

3-color woodcut

26 x 18 1/2" (66 x 47 cm)

Edition of 100 plus 25 Artist Proofs, AP V/XXV

Published by Pace Editions



Wedding Souvenir 1996

Cast plaster and white paint

5 1/2 x 6 1/2 x 2 1/4" (14 x 16.5 x 5.7 cm)

A series of approximately 200

Published by the artist



Profiterole 1990

Cast aluminum sculpture, hand-painted by the artist

6 x 8 1/8 x 8 5/8" (15.2 x 20.3 x 21.6 cm)

Edition of 75, #66

Published by Gemini G.E.L.

Gemini ID No. CO88-2152



Baked Potato (from 7 Objects in a Box) 1966

Cast resin, painted with acrylic

4 x 8 x 4 5/8" (10.2 x 20.3 x 11.7 cm)

Edition of 75, AP



GEMINI G.E.L. ^{AT} JONI MOISANT WEYL

CLAES OLDENBURG
A SURVEY OF PRINT AND SCULPTURE EDITIONS

May 16 – September 14, 2019



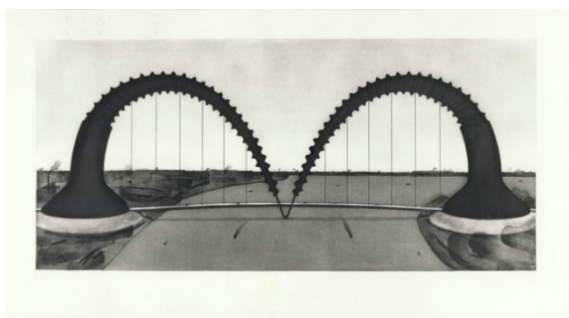
**Proposal for a Colossal Monument in Downtown
New York City: Sharpened Pencil Stub with Broken-
off Tip of the Woolworth Building** 1993

8-color etching/aquatint
32 1/2 x 22" (82.5 x 55.9 cm)
Edition of 60 plus 8 Artist Proofs, AP IV/VIII
Published by Aldo Crommelynck



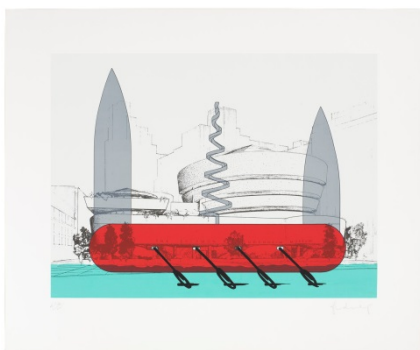
Musical Hearts 2012

8-color screenprint
14 x 11 1/8" (35.6 x 28.3 cm)
Edition of 150 plus 28 Artist Proofs, AP 6/28
Published by Gemini G.E.L.
Gemini ID No. CO12-5363



Screwarch Bridge (State II) 1980

5-color hard-ground etching/spitbite sugar-lift aquatint
31 1/4 x 57 3/4" (79.4 x 146.7)
Edition of 35 plus 12 Artist Proofs, AP I/XII
Published by Multiples



**Knife Ship Superimposed on the Solomon R. Guggenheim
Museum** 1986

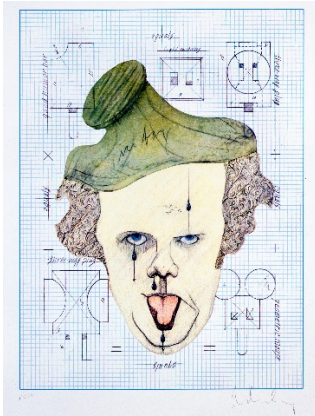
8-color screenprint
30 1/2 x 36 3/4" (77.5 x 93.3 cm)
Edition of 75, #72
Published by Multiples



GEMINI G.E.L. ^{AT} JONI MOISANT WEYL

CLAES OLDENBURG
A SURVEY OF PRINT AND SCULPTURE EDITIONS

May 16 – September 14, 2019



Symbolic Self-Portrait with "Equals" 1971

Offset lithograph in four colors
28 1/2 x 20 7/8" (72.4 x 53 cm)
Edition of 300 plus 25 Artist Copies, AC 4
Published by Sidney Janis Gallery Editions and
Contemporary Arts Council, LACMA



Double-Nose/Purse/Punching Bag/Ashtray 1970

1-color lithograph
21 x 19" (53.3 x 48.3 cm)
Edition of 50, #26
Published by Gemini G.E.L.
Gemini ID No. CO70-369



Nose Handkerchief 1968

1-color screenprint on cream silk handkerchief
19 x 19" (48.3 x 48.3 cm)
Edition of 150, #106
Published by Documenta Foundation, Kassel, Germany



Double-Nose/Purse/Punching Bag/Ashtray 1970

Bronze casting, leather bag, wood chips, wooden box,
leather-covered book
Variable dimensions
Edition of 75, #27
Published by Gemini G.E.L.
Gemini ID No. CO70-2003



GEMINI G.E.L. ^{AT} JONI MOISANT WEYL

CLAES OLDENBURG
A SURVEY OF PRINT AND SCULPTURE EDITIONS

May 16 – September 14, 2019



Ice Bag – Scale B 1971
Programmed kinetic sculpture
48" diameter, rising to 40" height (121.9 cm)
Edition of 25
Published by Gemini G.E.L.
Gemini ID No. CO71-2005



Thrown Ink Bottle with Fly and Dropped Quill 1991
6-color lithograph
45 x 35" (114.3 x 88.9 cm)
Edition of 75, #59
Published by Gemini G.E.L.
Gemini ID No. CO90-1230



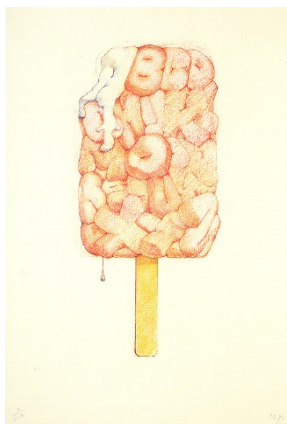
Soft Alphabet 1978
41 sand-filled, sewn cloth pieces in wooden box,
screenprint on lid
2 7/8 x 29 3/16 x 22 1/8" (7.3 x 74.1 x 56.2 cm)
Edition of 16, #6
Published by Multiples



GEMINI G.E.L. ^{AI} JONI MOISANT WEYL

CLAES OLDENBURG
A SURVEY OF PRINT AND SCULPTURE EDITIONS

May 16 – September 14, 2019



Alphabet in the Form of a Good Humor Bar 1970

Offset lithograph in 4 colors

29 x 20" (73.7 x 50.8 cm)

Edition of 250, #29

Published by Paul Bianchini



Extinguished Match 1990

4-color lithograph

40 3/4 x 30 3/4" (103.5 x 78.1 cm)

Edition of 58, #22

Published by Gemini G.E.L.

Gemini ID No. CO89-1207



Extinguished Match 1990

Color lithograph

40 3/4 x 30 3/4" (103.5 x 78.1 cm)

Edition of 58, Trial Proof

Published by Gemini G.E.L.

Gemini ID No. CO89-1207



GEMINI G.E.L. ^{AT} JONI MOISANT WEYL

CLAES OLDENBURG
A SURVEY OF PRINT AND SCULPTURE EDITIONS

May 16 – September 14, 2019



Arch in the Form of a Screw, for Times Square NYC 1976

1-color lithograph
67 1/2" x 40 1/2" (171.5 x 102.9 cm)
Edition of 35, #3
Published by Gemini G.E.L.
Gemini ID No. CO75-750



Colossal Screw in Landscape- Type 2 1976

1-color lithograph
67 1/2" x 40 1/2" (171.5 x 102.9 cm)
Edition of 35, #2
Published by Gemini G.E.L.
Gemini ID No. CO75-756



Landscape with Noses 1976

1-color etching
20 3/8 x 15 11/16" (51.8 x 39.9 cm)
Edition of 35, #23
Published by Multiples



GEMINI G.E.L. ^{AT} JONI MOISANT WEYL

CLAES OLDENBURG
A SURVEY OF PRINT AND SCULPTURE EDITIONS

May 16 – September 14, 2019



The Spitzhacke, 1982, Superimposed on a Drawing of the Site by Emil Ludwig Grimm, 1822 1982

6-color hard-ground etching/photogravure/spitbite

26 x 20" (66 x 50.8 cm)

Edition of 100, #15

Published by the Documenta Foundation



Voting Button in Landscape 1984

6-color screenprint

30 x 23" (76.2 x 58.4 cm)

Edition of 150 plus 15 Artist Proofs, AP III/XV

Published by Artists for Mondale



Rolling Collar and Tie 1995

5-color lithograph

38 x 27 1/2" (96.5 x 69.8 cm)

Edition of 52, #32

Published by Brooke Alexander Editions



GEMINI G.E.L. ^{AT} JONI MOISANT WEYL

CLAES OLDENBURG
A SURVEY OF PRINT AND SCULPTURE EDITIONS

May 16 – September 14, 2019



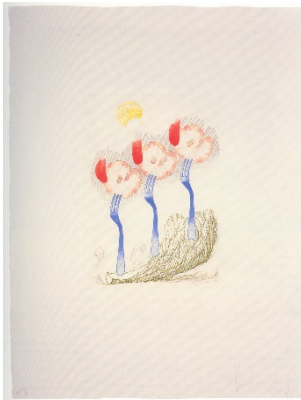
Picasso Cufflink 1974

13-color lithograph

36 1/8 x 26 7/8" (91.8 x 68.3 cm)

Edition of 90 plus 15 Artist Proofs, AP 15/15

Published by Propyläen Verlag, Berlin



Thoughts About the French Revolution

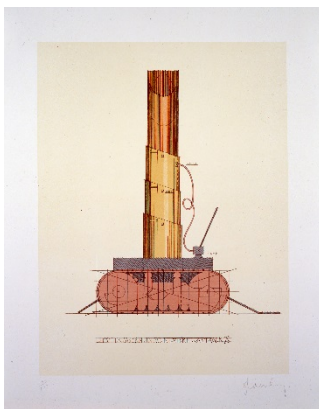
While Eating a Shrimp Salad 1989

6-color soft-ground etching/sugarlift/spitbite aquatint

30 x 22 3/8" (76 x 56.8 cm)

Edition of 100 plus 10 Artist Proofs, AP V/X

Published by Fonds National d'Art Contemporain



Lipstick (Ascending) on Caterpillar

Tracks (1969) 1972

6-color lithograph

30 x 23 1/4" (76.2 x 59.1 cm)

Edition of 100, #51

Published by Paul Bianchini



GEMINI G.E.L. ^{AI} JONI MOISANT WEYL

CLAES OLDENBURG
A SURVEY OF PRINT AND SCULPTURE EDITIONS

May 16 – September 14, 2019



Typewriter Eraser 1970

3-color lithograph

12 x 9 1/2" (31.1 x 24.1 cm)

Edition of 100, #42

Published by Gemini G.E.L.

Gemini ID No. CO70-310



GEMINI G.E.L. ^{AT} JONI MOISANT WEYL

CLAES OLDENBURG
A SURVEY OF PRINT AND SCULPTURE EDITIONS

May 16 – September 14, 2019

IN THE PROJECT SPACE



Perfume Atomizer, on a Pillow 1997

8-color lithograph with embossing
22 1/2 x 26" (57.2 x 71.1 cm)
Edition of 36, #30
Published by Gemini G.E.L.
Gemini ID No. CO92-1338



Miniature Soft Drum Set 1969

Screenprint and spray-paint on canvas, with rope and
painted wood stand
Approx.. 9 x 19 x 13" (22.9 x 48.3 x 33 cm)
Edition of 200, #48
Published by Multiples



Hard Times Bulb - Night 1995

Unique lithograph with chine collé,
coathanger and pin
35 x 26 1/2 x 3" (88.9 x 67.3 x 7.6 cm)
27 unique works
Published by Gemini G.E.L.
Gemini ID No. CO94-180A (#10)



GEMINI G.E.L. ^{AI} JONI MOISANT WEYL

CLAES OLDENBURG
A SURVEY OF PRINT AND SCULPTURE EDITIONS

May 16 – September 14, 2019



Hard Times Bulb - Day 1995
Unique lithograph with chine collé,
coathanger and pin
35 x 26 1/2 x 3" (88.9 x 67.3 x 7.6 cm)
18 unique works
Published by Gemini G.E.L.
Gemini ID No. CO94-180 (#9)



Sneaker Lace in Landscape with Palm Trees 1991
4-color lithograph
57 x 42 1/2" (144.8 x 108 cm)
Edition of 55 (Gemini I)
Published by Gemini G.E.L.
Gemini ID No. CO89-1206



GEMINI G.E.L. ^{AT} JONI MOISANT WEYL

CLAES OLDENBURG
A SURVEY OF PRINT AND SCULPTURE EDITIONS

May 16 – September 14, 2019



Perfume Atomizer, on a Pillow on a Chair Leg 1997

8-color lithograph with embossing

38 3/4 x 27" (98.4 x 68.6 cm)

Edition of 35, #10

Published by Gemini G.E.L.

Gemini ID No. CO92-1340



Perfume Atomizer, on a Chair Leg 1997

8-color lithograph/screenprint with embossing

38 1/2 x 27" (97.8 x 68.6 cm)

Edition of 37 (Gemini I)

Published by Gemini G.E.L.

Gemini ID No. CO92-1339



GEMINI G.E.L. ^{AT} JONI MOISANT WEYL

CLAES OLDENBURG
A SURVEY OF PRINT AND SCULPTURE EDITIONS

May 16 – September 14, 2019

PLEASE ASK TO VIEW



Sneaker Lace in Landscape-Gray 1991

4-color lithograph
57 x 42 1/2" (144.8 x 108 cm)
Edition of 55, #15
Published by Gemini G.E.L.
Gemini ID No. CO89-1213



Butt for Gantt 1990

3-color lithograph with embossing
19 x 18" (48.3 x 45.7 cm)
Edition of 250, #250
Published by Gemini G.E.L.
Gemini ID No. CO90-1242



Wrist Watch Rising, State II 1991

4-color woodcut
20 1/8 x 16" (51.1 x 40.6 cm)
Edition of 18, #15
Published by the artist



GEMINI G.E.L. ^{AT} JONI MOISANT WEYL

CLAES OLDENBURG
A SURVEY OF PRINT AND SCULPTURE EDITIONS

May 16 – September 14, 2019



Three Hats 1974

8-color lithograph

35 1/4 x 23 1/8" (89.6 x 58.7 cm)

Edition of 100, #44

Published by the Committee to Endow a Chair
in Honor of Meyer Shapiro at Columbia University



Tongue Cloud over London, with Thames Ball 1976

5-color soft-ground etching and aquatint

40 7/8 x 31 1/8" (103.8 x 79.1 cm)

Edition of 60

Published by Petersburg Press



Soft Light Bulb - Night 1997

1-color lithograph with chine collé,

31 3/4 x 24" (80.6 x 61 cm)

Edition of 35, #30

Published by Gemini G.E.L.

Gemini ID No. CO92-1341B



GEMINI G.E.L. ^{AT} JONI MOISANT WEYL

CLAES OLDENBURG
A SURVEY OF PRINT AND SCULPTURE EDITIONS

May 16 – September 14, 2019



Soft Light Bulb - Day 1997
1-color lithograph with chine collé,
31 3/4 x 24" (80.6 x 61 cm)
Edition of 36 (Gemini I)
Published by Gemini G.E.L.
Gemini ID No. CO92-1341A



Perfume Atomizer on a Chair Leg (Line Version) 1997
7-color lithograph/screenprint
44 x 31 1/2" (111.8 x 80 cm)
Edition of 27 (Gemini I)
Published by Gemini G.E.L.
Gemini ID No. CO92-1339A



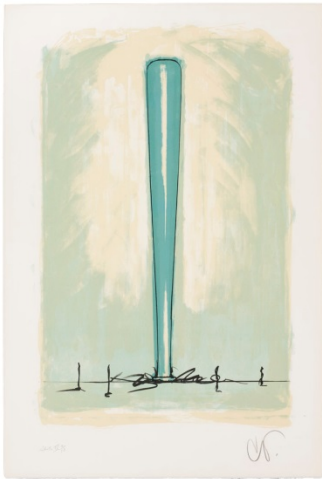
Butter Pat in Berkley Hills 1976
Soft ground etching and aquatint in four colors
26 x 20" (66 x 50.8 cm)
Published by Multiples



GEMINI G.E.L. ^{AT} JONI MOISANT WEYL

CLAES OLDENBURG
A SURVEY OF PRINT AND SCULPTURE EDITIONS

May 16 – September 14, 2019



Bat Spinning at the Speed of Light, State IV 1975

4-color lithograph

37 1/8 x 25 1/8" (94.3 x 63.8 cm)

Edition of 10, #4

Published by Landfall Press