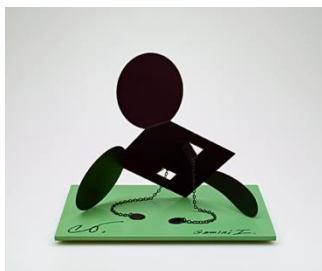




GEMINI G.E.L. <sup>AT</sup> JONI MOISANT WEYL

## PACIFIC SERIOUSLY

January 5 – March 10, 2018



### CLAES OLDENBURG

GEOMETRIC MOUSE, SCALE E, "DESKTOP", 2013

Painted aluminum sculpture on painted aluminum, signed-and-numbered base  
6 1/2" x 8 1/4" x 6 1/2" (16.5 x 21.0 x 16.5 cm)  
Edition of 50, #48  
CO13-2234



### ROBERT RAUSCHENBERG

PULL 1974

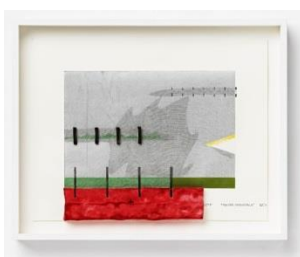
Transfer/collage on fabric  
85 x 48" (215.9 x 121.9 cm)  
Edition of 29, #11  
RR74-690



### EDWARD KIENHOLZ & NANCY REDDIN KIENHOLZ

THE BLOCK HEAD 1981

Edition sculpture with pumice construction block, Fresnel lens system, wood, leather, and transistor radio  
12 1/2 x 8 1/2 x 12 1/4" (31.8 x 21.6 x 31.1 cm)  
Edition of 75, #9  
EdK79-2052



### RICHARD TUTTLE

"PACIFIC SERIOUSLY" 2012

6-color spit bite, aquatint, chine collé and paper pulp construction, each with unique hand-drawing by the artist  
20 1/4 x 25 1/4 x 2" (51.4 x 64.1 x 5.08 cm), framed  
Series of 38 unique works, #24  
RT11-224



GEMINI G.E.L. <sup>AT</sup> JONI MOISANT WEYL

**PACIFIC SERIOUSLY**

January 5 – March 10, 2018



**VIJA CELMINS**

DRYPOINT - OCEAN SURFACE - 2ND STATE 1985

1-color drypoint

24 x 19" (61 x 48.3 cm)

Edition of 55, AP7

VC84-3101



**TACITA DEAN**

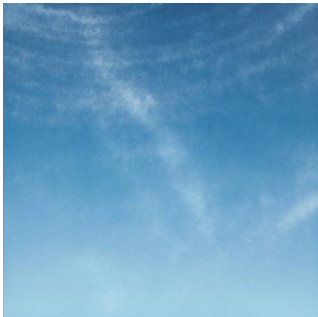
LA EXUBERANCE 13 2016

Hand-drawn 3-color blend lithograph

29 7/8 x 29 7/8" (75.9 x 75.9 cm)

Edition of 36, #33

TD15-1654



**TACITA DEAN**

LA EXUBERANCE 14 2016

Hand-drawn 3-color blend lithograph

29 7/8 x 29 7/8" (75.9 x 75.9 cm)

Edition of 36, #33

TD15-1655



**TACITA DEAN**

LA EXUBERANCE 15 2016

Hand-drawn 3-color blend lithograph

29 7/8 x 29 7/8" (75.9 x 75.9 cm)

Edition of 36, #33

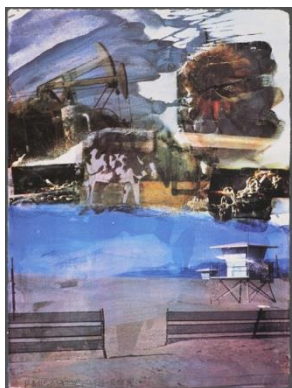
TD15-1656



GEMINI G.E.L. <sup>AT</sup> JONI MOISANT WEYL

**PACIFIC SERIOUSLY**

January 5 – March 10, 2018



**ROBERT RAUSCHENBERG**

L.A. UNCOVERED #5 1998

11-color screenprint

31 x 22 3/4" (78.7 x 57.8 cm)

Edition of 50, #22

RR98-5254



**ROBERT RAUSCHENBERG**

L.A. UNCOVERED #9 1998

11-color screenprint

31 x 22 1/2" (78.7 x 57.2 cm)

Edition of 55, #22

RR98-5258



**KEN PRICE**

THE FIREWORM CUP 1991

Earthenware with hand-painted glaze

in wooden display box

3 7/8 x 6 1/4 x 3 1/4" (9.8 x 15.9 x 8.3 cm)

box 8 x 10 3/8 x 5 3/4" (20.3 x 26.4 x 14.6 cm)

Edition of 25, #3

KP91-2177



**KEN PRICE**

CALIFORNIA CUP 1991

Earthenware with hand-painted glaze

in wooden display box

4 1/8 x 6 x 3" (10.5 x 15.2 x 7.6 cm)

box 8 x 10 3/8 x 5 3/4" (20.3 x 26.4 x 14.6 cm)

Edition of 25, #20

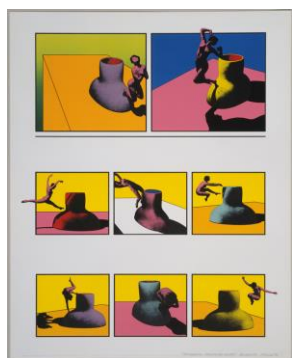
KP91-2176



GEMINI G.E.L. <sup>AT</sup> JONI MOISANT WEYL

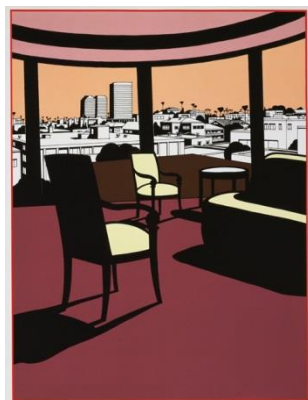
## PACIFIC SERIOUSLY

January 5 – March 10, 2018



### KEN PRICE

FIGURINE CUP V 1970  
10-color lithograph  
22 x 18" (55.9 x 45.7 cm)  
Edition of 60, #60  
KP70-269



### KEN PRICE

WESTERN SUNSET 1993  
7-color screenprint  
26 x 20 3/8" (66 x 51.8 cm)  
Edition of 70, #63  
KP92-5199



### KEN PRICE

TEXAS TURTLE CUP 1971  
16-color screenprint  
41 x 32 1/2" (104.1 x 82.6 cm)  
Edition of 75, #38  
KP71-5005



GEMINI G.E.L. <sup>AT</sup> JONI MOISANT WEYL

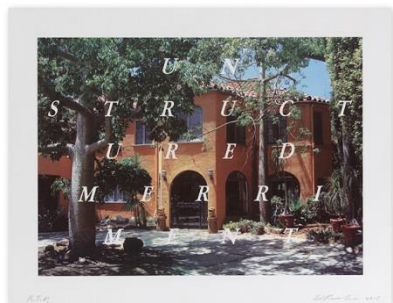
**PACIFIC SERIOUSLY**

January 5 – March 10, 2018



**MICHAEL HEIZER**

LEVITATED MASS 2015  
34-color lithograph  
35 x 94" (88.9 x 238.8 cm)  
Edition of 16, #8  
MH13-1627



**ED RUSCHA**

UNSTRUCTURED MERRIMENT 2016  
19-color lithograph/screenprint  
23 1/4 x 30" (59.1 x 76.2 cm)  
Edition of 60, #36  
ER15-1636



**FRANK GEHRY**

HOUSE STUDY 2 2016  
1-color etching  
37 1/4 x 17" (94.6 x 43.2 cm)  
Edition of 35, #16  
FG16-3548



**FRANK GEHRY**

HOUSE STUDY DETAIL C 2016  
1-color etching  
15 1/2 x 18" (39.4 x 45.7 cm)  
Edition of 35, #16  
FG16-3550



GEMINI G.E.L. <sup>AT</sup> JONI MOISANT WEYL

## PACIFIC SERIOUSLY

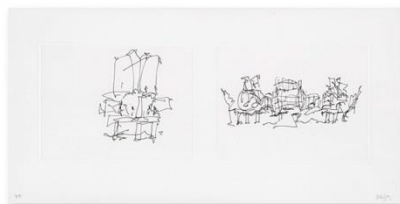
January 5 – March 10, 2018



**FRANK GEHRY**  
HOUSE STUDY 1 2016  
1-color etching  
15 1/2 x 44 3/4"  
(39.4 x 113.7 cm)  
Edition of 35, #16  
FG16-3547



**FRANK GEHRY**  
HOUSE STUDY DETAIL B 2016  
1-color etching  
15 1/2 x 18" (39.4 x 45.7 cm)  
Edition of 35, #16  
FG16-3552



**FRANK GEHRY**  
HOUSE STUDY DETAIL A 2016  
1-color etching  
15 1/2 x 31" (39.4 x 78.7 cm)  
Edition of 35, #16  
FG16-3549



**JOHN BALDESSARI**  
GOD NOSE 2007  
Hand-painted cast aluminum  
36 x 37 x 6" (91.4 x 94 x 15.2 cm)  
Edition of 25, #21  
JBA07-2219



**CLAES OLDENBURG**  
GEOMETRIC MOUSE 1971  
Moveable 3-dimensional object (black anodized aluminum)  
24 x 20" (62 1/5 x 50 4/5 cm)  
Edition of 120, #115  
CO71-2011



---

GEMINI G.E.L. <sup>AT</sup> JONI MOISANT WEYL

**PACIFIC SERIOUSLY**  
January 5 – March 10, 2018