



---

GEMINI G.E.L. <sup>AT</sup> JONI MOISANT WEYL

*International Fine Print Dealers Association*  
**Fine Art Print Fair**  
**October 27-30, 2022**



**TOBA KHEDOORI**

*Untitled (grass) 2022*

1-color intaglio etching with chine collé  
77 7/8 x 50 1/2" (197.8 x 128.3 cm)

Edition of 38, #35

TK21-3599



---

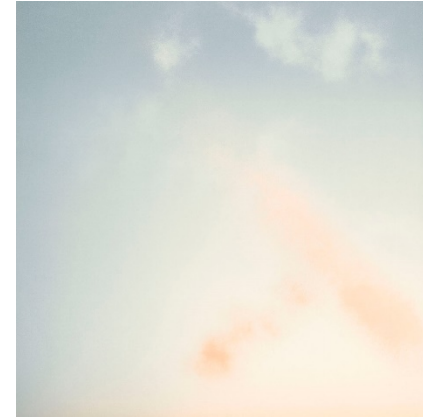
GEMINI G.E.L. <sup>AT</sup> JONI MOISANT WEYL



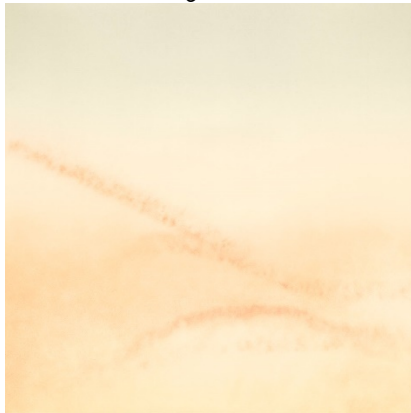
*LA Magic Hour 1*



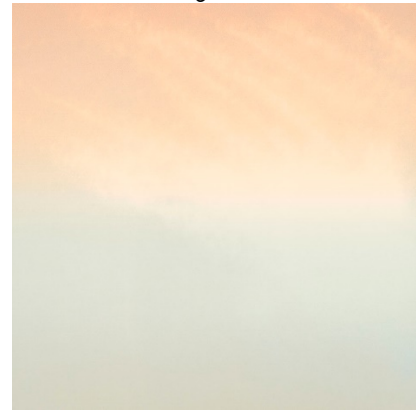
*LA Magic Hour 2*



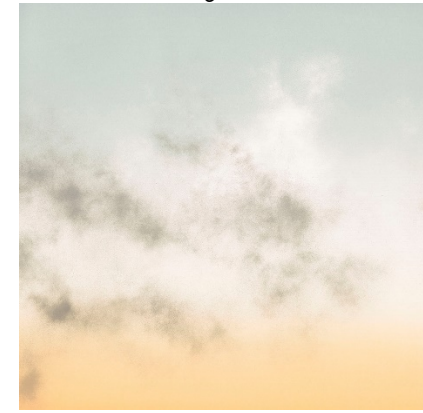
*LA Magic Hour 5*



*LA Magic Hour 7*



*LA Magic Hour 9*



*LA Magic Hour 10*

**TACITA DEAN**  
*LA Magic Hour* 2021  
Hand-drawn, multi-color blend lithographs  
29 7/8 x 29 7/8" (75.9 x 75.9 cm) (each)  
Editions of 42  
TD17-1658-1672



GEMINI G.E.L. AT JONI MOISANT WEYL



*Pantone Pair (Limeade)*



*Pantone Pair (1797)*



*Pantone Pair (Fir)*



*Pantone Pair (Fiesta)*



*Pantone Pair (Rust)*



*Pantone Pair (4545)*

**TACITA DEAN**

*Pantone Pairs* 2019

Found Pantone card paired with postcard from the artist's collection,  
monoprinted and framed to the artist's specifications

12 1/2 x 15 x 1 1/2" (31.8 x 38.1 x 3.8 cm) (each)

A series of 80 unique works

TD19-258



GEMINI G.E.L. <sup>AT</sup> JONI MOISANT WEYL



**FRANK GEHRY**

*Pointe du Hoc Normandy Coast June 6 1944 2020*

1-color lithograph

22 x 30" (55.9 x 76.2 cm)

Edition of 50, #48

FG20-1679



GEMINI G.E.L. <sup>AT</sup> JONI MOISANT WEYL



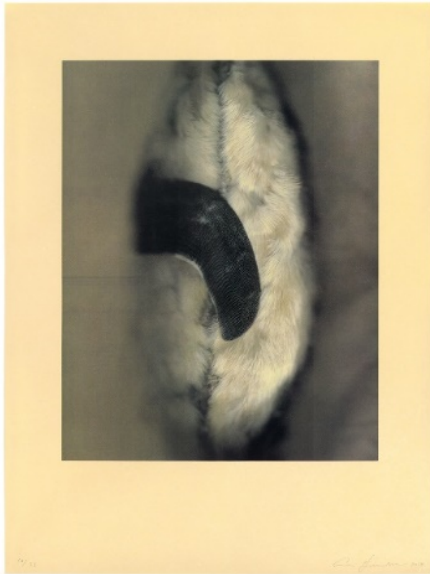
**ANN HAMILTON**  
*Green-barred Woodpecker* 2021  
5-color lithograph, two panels  
overall 36 x 42 5/8" (91.4 x 108.3 cm)  
Edition of 30, #19  
AH15-1637



**ANN HAMILTON**  
*Assam Macaque* 2021  
5-color lithograph  
22 1/2 x 14" (57.2 x 35.6 cm)  
Edition of 34, #20  
AH15-1641



GEMINI G.E.L. <sup>AT</sup> JONI MOISANT WEYL



**ANN HAMILTON**  
*Jackass Penguin* 2021  
11-color lithograph  
30 x 22 1/2" (76.2 x 57.2 cm)  
Edition of 33, #17  
AH15-1639



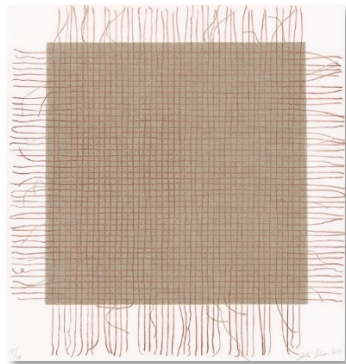
**ANN HAMILTON**  
*Little Spotted Kiwi* 2021  
4-color lithograph  
30 x 22 1/2" (76.2 x 57.2 cm)  
Edition of 30, #16  
AH15-1638



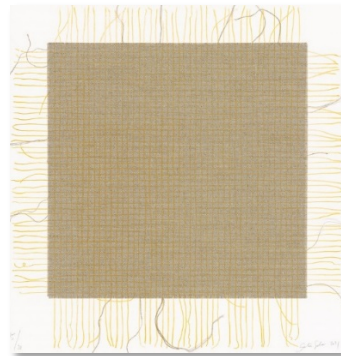
**ANN HAMILTON**  
*Long-tailed Koel* 2021  
7-color lithograph  
30 x 22 1/2" (76.2 x 57.2 cm)  
Edition of 30, #15  
AH15-1640



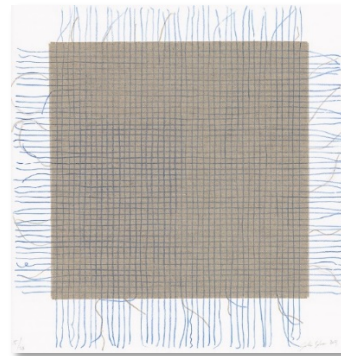
GEMINI G.E.L. <sup>AT</sup> JONI MOISANT WEYL



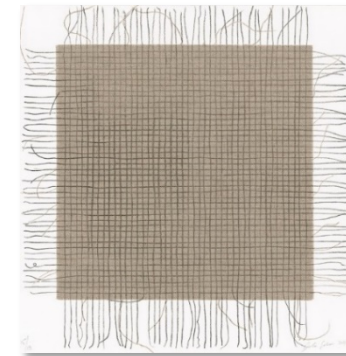
*Transcending Grid (Red)*



*Transcending Grid (Yellow)*



*Transcending Grid (Blue)*



*Transcending Grid (Black)*

**ANALIA SABAN**

*Transcending Grids* 2021

1-color softground etchings with linen chine collé

17 1/2 x 16 5/8" (44.5 x 42.2 cm) (each)

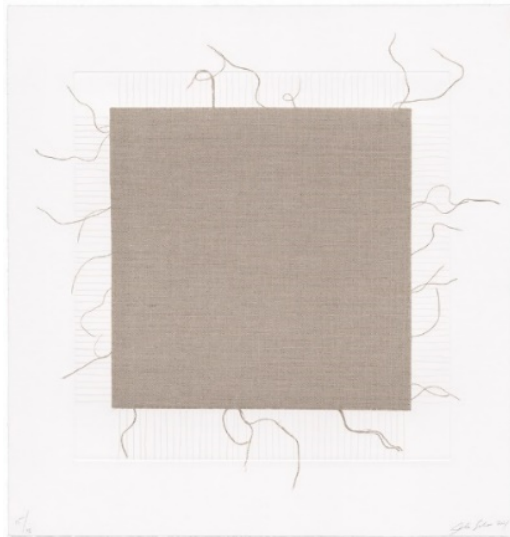
Editions of 28

AS19-3585-89



---

GEMINI G.E.L. <sup>AT</sup> JONI MOISANT WEYL



**ANALIA SABAN**  
*Transcending Grid, White (with Fringes)* 2021  
1-color softground etching with linen chine collé  
22 1/2 x 21 1/2" (57.2 x 54.6 cm)  
Edition of 28, #14  
AS19-3584

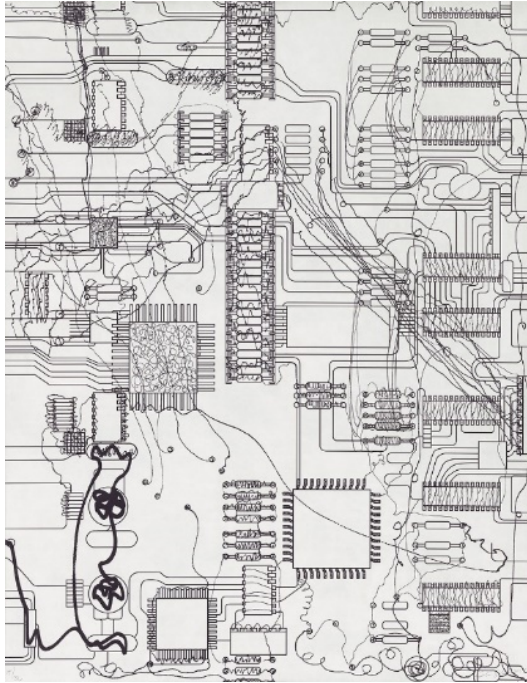


**ANALIA SABAN**  
*Pressed Linen Canvas (Square)* 2021  
Linen chine collé  
23 3/4 x 21 3/4" (60.3 x 55.3 cm)  
Edition of 35, #14  
AS19-3597





GEMINI G.E.L. <sup>AT</sup> JONI MOISANT WEYL



**ANALIA SABAN**

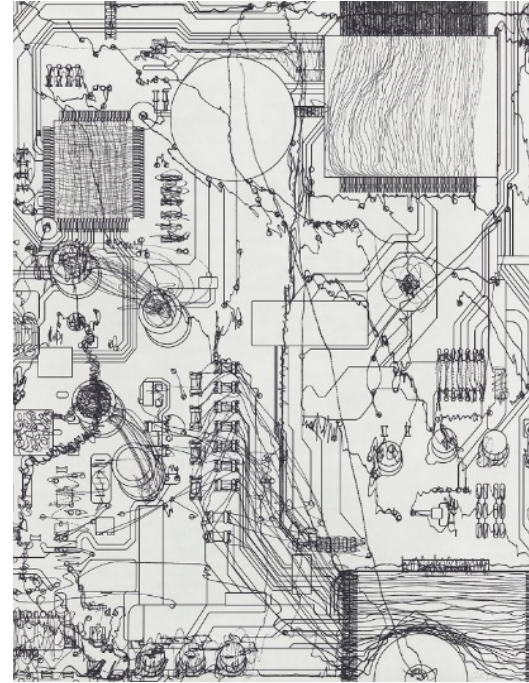
*Circuit Board #1* 2021

2-color aquatint etching with hardground and drypoint

39 3/4 x 30 3/4" (101 x 78.1 cm)

Edition of 32, #8

AS19-3577



**ANALIA SABAN**

*Circuit Board #4* 2021

2-color aquatint etching with hardground and drypoint

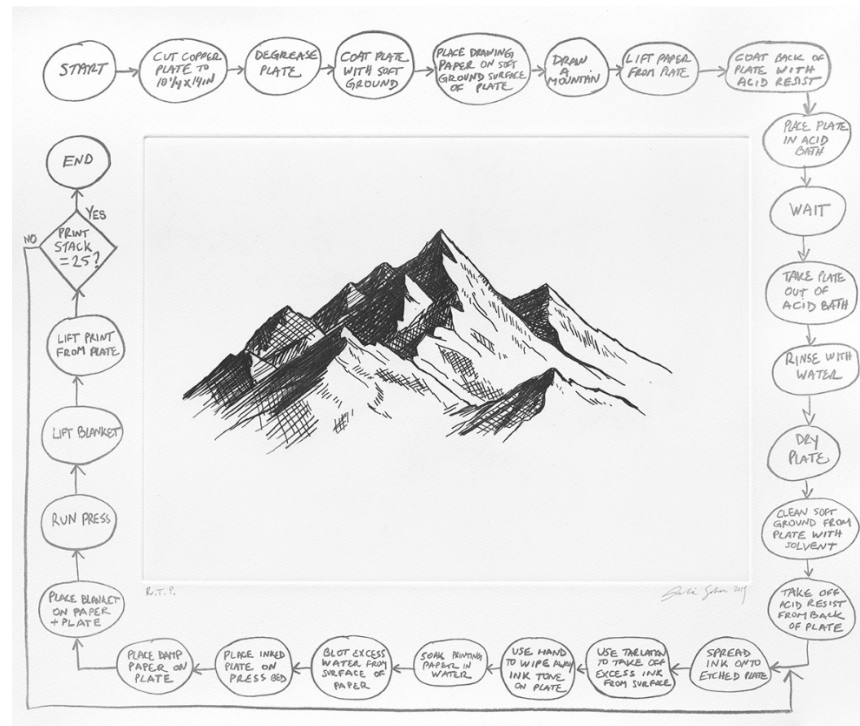
39 3/4 x 30 3/4" (101 x 78.1 cm)

Edition of 32, #8

AS19-3580



GEMINI G.E.L. <sup>AT</sup> JONI MOISANT WEYL



**ANALIA SABAN**

Flowchart (Mountain) 2020

2-color etching

16 5/8 x 19 7/8" (42.23 x 50.48 cm)

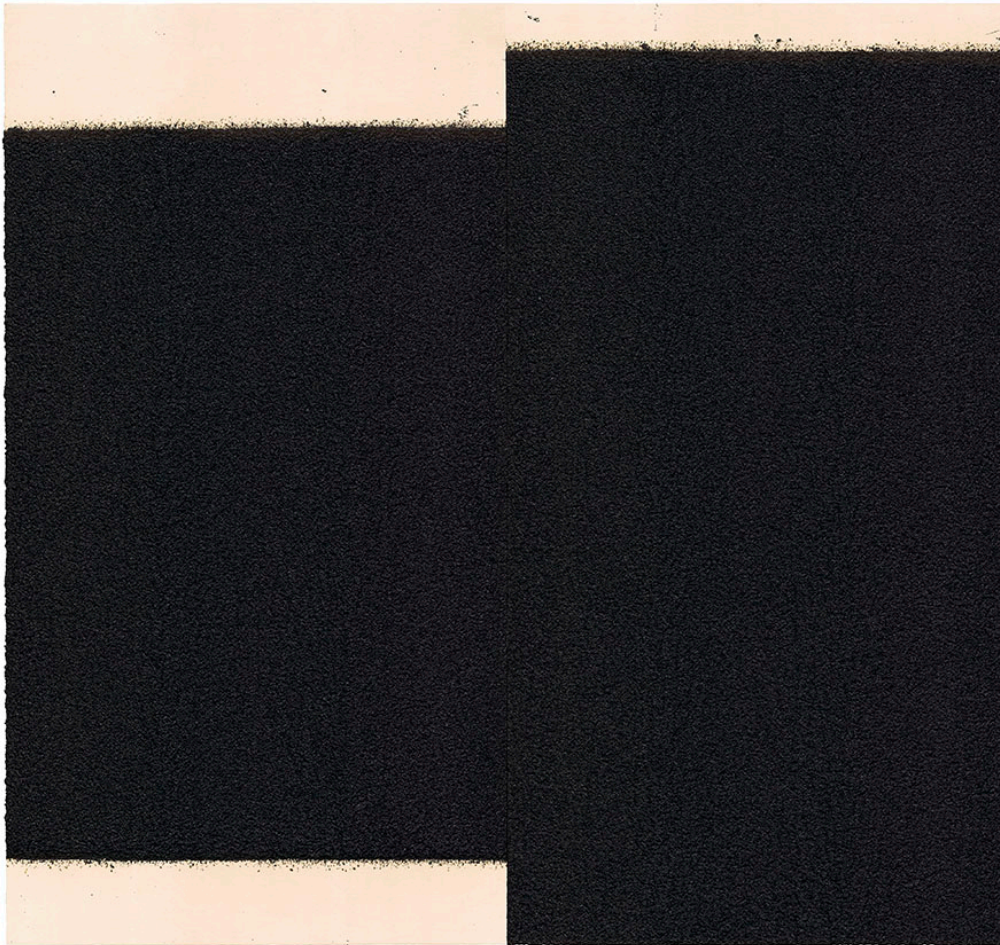
Edition of 25, #23

AS19-3591



---

GEMINI G.E.L. <sup>AT</sup> JONI MOISANT WEYL



**RICHARD SERRA**

*Backstop I* 2021

2-color oil stick and silica over 1-color etching, two panels  
overall 60 x 64" (152.4 x 162.6 cm)

Edition of 50, #40

RS19-4062



GEMINI G.E.L. <sup>AT</sup> JONI MOISANT WEYL



**JOHN BALDESSARI**

*Noses & Ears, Etc.: One Face (Three Versions) with Nose, Ear and Glasses, 2006*

3-layer, 26-color screenprint construction, mounted to Sintra

Framed: 34 3/4 x 76 3/4 x 3" (88.3 x 194.9 x 7.6 cm)

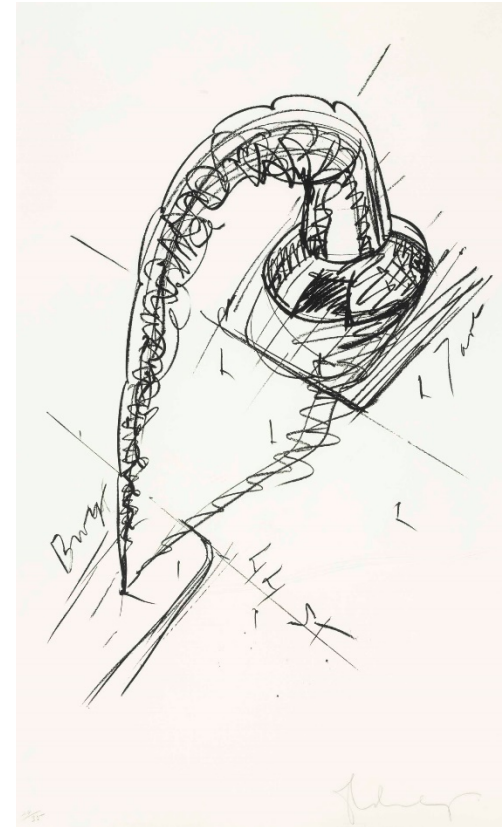
Edition of 45, AP 10

JBA06-5311



GEMINI G.E.L. <sup>AT</sup> JONI MOISANT WEYL

A TRIBUTE TO CLAES OLDENBURG:



**CLAES OLDENBURG**

*Arch In The Form Of A Screw, For Times Square NYC* 1976

1-color lithograph

67 1/2 x 40 1/2" (171.5 x 102.9 cm)

Edition of 35, #3

CO75-750



GEMINI G.E.L. <sup>AT</sup> JONI MOISANT WEYL



**CLAES OLDENBURG**

*Profile Airflow - Test Mold, Front End* 1972  
Molded polyurethane relief over 1-color silkscreen on plexiglas  
18 1/2 x 15 5/8 x 4" (47 x 39.7 x 10.2 cm)  
Edition of 50, AP IV  
CO72-2009



GEMINI G.E.L. <sup>AT</sup> JONI MOISANT WEYL



**CLAES OLDENBURG**

*Soft Alphabet* 1978

41 sand-filled, sewn cloth pieces in wooden box, screenprint on lid  
2 7/8 x 29 3/16 x 22 1/8" (7.3 x 74.1 x 56.2 cm)

Edition of 16, #6

Published by Multiples



**CLAES OLDENBURG**

*Alphabet in the Form of a Good Humor Bar* 1970

Offset lithograph in 4 colors  
29 x 20" (73.7 x 50.8 cm)

Edition of 250, #16

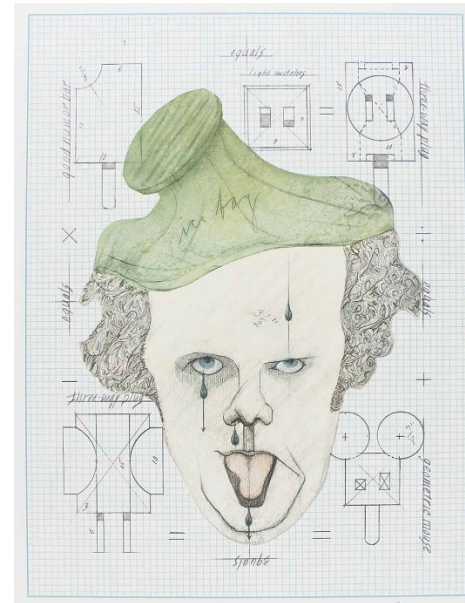
Published by Paul Bianchini



GEMINI G.E.L. <sup>AT</sup> JONI MOISANT WEYL



**CLAES OLDENBURG**  
*Ice Bag* 1970  
1-color lithograph  
16 x 22" (40.6 x 55.9 cm)  
Edition of 27, #20  
CO70-309



**CLAES OLDENBURG**  
*Symbolic Self-Portrait with "Equals"* 1971  
Offset lithograph in four colors  
28 1/2 x 20 7/8" (72.4 x 53 cm)  
Edition of 300, AC 4  
Published by Sidney Janis Gallery Editions



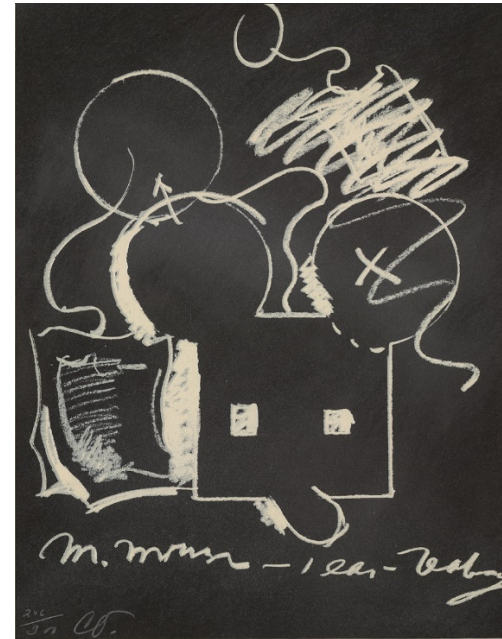


GEMINI G.E.L. <sup>AT</sup> JONI MOISANT WEYL



**CLAES OLDENBURG**

*Geometric Mouse, Scale E, "Desktop"* 2013  
Painted aluminum sculpture on painted aluminum  
6 1/2 x 8 1/4 x 6 1/2" (16.5 x 21 x 16.5 cm)  
Edition of 50, #8  
CO13-2234



**CLAES OLDENBURG**

*M. Mouse (with 1 Ear (equals) Tea Bag Blackboard Version* (1965) 1973  
2-color screenprint/lithograph, wiped with talcum powder  
12 x 9" (30.5 x 22.9 cm)  
Edition of 300, AP V  
Published by Experiments in Art and Technology



GEMINI G.E.L. <sup>AT</sup> JONI MOISANT WEYL



**CLAES OLDENBURG**  
*Musical Hearts* 2012  
2-color screenprint  
14 x 11 1/8" (35.6 x 28.3 cm)  
Edition of 150, #133  
CO12-5363



**CLAES OLDENBURG**  
*Profiterole* 1990  
Cast aluminum sculpture, hand-painted by the artist  
6 x 8 1/8 x 8 5/8" (15.2 x 20.6 x 21.9 cm)  
Edition of 75, #66  
CO88-2152