



GEMINI G.E.L. <sup>AT</sup> JONI MOISANT WEYL

P R I V A T E   S A L E  
July 12 – September 30, 2010

**RICHARD ARTSCHWAGER**

*Retail*

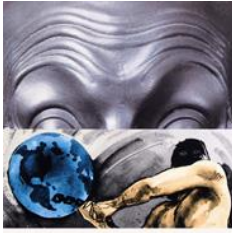


THE DISCOVERY OF UP AND DOWN 2008  
1-color etching  
46 x 32 3/4" Edition of 35, #18  
RA08-3432



THE DISCOVERY OF RIGHT AND LEFT 2008  
1-color etching  
18 1/2 x 24" Edition of 35, #18  
RA08-3433

**JOHN BALDESSARI**



RAISED EYEBROWS / FURROWED FOREHEADS:  
FIGURE WITH GLOBE 2009  
14-color screenprint  
32 x 31" Edition of 70, #20  
JBA09-5328

**JONATHAN BOROFSKY**



MALE / FEMALE 2000  
1-color lithograph/4-color screenprint  
63 x 43" Edition of 35, #22  
JB99-1428



GEMINI G.E.L. <sup>AI</sup> JONI MOISANT WEYL

P R I V A T E   S A L E  
July 12 – September 30, 2010

**CECILY BROWN**

*Retail*



AUJOURD'HUI ROSE 2005  
4-color lithograph  
39 x 29 1/2" Edition of 75, #14  
CBR05-1528



UNTITLED 2005  
10-color lithograph  
40 x 29 1/2" Edition of 35, #14  
CBR05-1530

**VIJA CELMINS**



NIGHT SKY 1 (REVERSED) 2002  
3-color photogravure/aquatint/  
photo-etching/drypoint  
21 x 24 1/2" Edition of 65, #51  
VC02-3333



NIGHT SKY 2 (REVERSED) 2002  
3-color photogravure/aquatint/  
photo-etching/drypoint  
20 3/4 x 24 1/2" Edition of 65, #30  
VC02-3336



UNTITLED (WEB 4) 2002  
1-color photogravure/aquatint/drypoint  
20 1/2 x 24 1/4" Edition of 65, #20  
VC02-3335



GEMINI G.E.L. <sup>AI</sup> JONI MOISANT WEYL

P R I V A T E   S A L E  
July 12 – September 30, 2010

**SAM FRANCIS**

*Retail*



TURN 1972  
7-color screenprint  
28 x 35" Edition of 70, AP 9  
SF72-5019

**ALLEN GINSBERG**



UNTITLED #3 1998  
6-color lithograph/screenprint  
Estate Stamped  
30 1/4 x 23 1/4" Edition of 36, #28  
AG96-5238

**ROBERT GOBER**



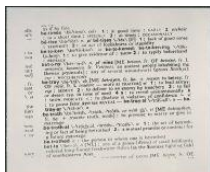
UNTITLED 2002  
4-color lithograph  
51 x 36" Edition of 65, #16  
ROGO01-1485



UNTITLED 2000  
1-color lithograph  
30 x 44 1/4" Edition of 50, #36  
ROGO99-1436



UNTITLED 2000  
2-color lithograph/2-color screenprint/  
embossment, with hand drawing and erasure  
30 x 43 1/2" Edition of 47, #36  
ROGO99-1437



UNTITLED 2000  
1-color lithograph  
38 x 46 1/2" Edition of 50, #36  
ROGO00-1453

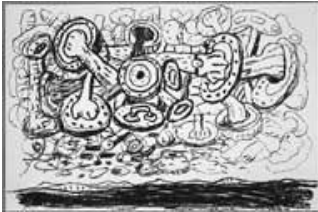


GEMINI G.E.L. <sup>AI</sup> JONI MOISANT WEYL

P R I V A T E   S A L E  
July 12 – September 30, 2010

**PHILIP GUSTON**

*Retail*



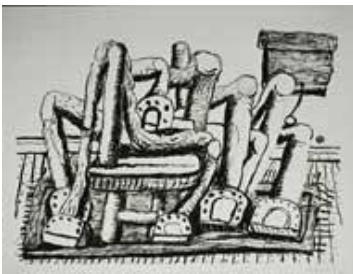
SKY 1983  
1-color lithograph  
20 x 29 3/4" Edition of 50, AP 10  
PG79-928



STUDIO CORNER 1981  
1-color lithograph  
32 x 42 1/2" Edition of 50, #48  
PG79-919



REMAINS 1981  
1-color lithograph  
Estate Stamped  
19 1/2 x 29 3/4" Edition of 50, #17  
PG79-936



ROOM 1980  
1-color lithograph  
32 3/4 x 42 1/2" Edition of 50, AP 8  
PG79-916



RUG 1980  
1-color lithograph  
19 1/2 x 29" Edition of 50, #7  
PG79-929



GEMINI G.E.L. <sup>AI</sup> JONI MOISANT WEYL

P R I V A T E   S A L E  
July 12 – September 30, 2010

**ANN HAMILTON**

*Retail*



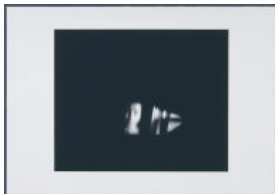
gauge (black) 2007  
2-color lithograph/screenprint  
38 x 56" Edition of 16, #12  
AH07-1554



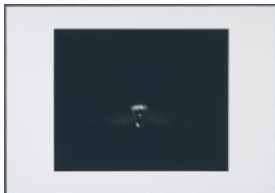
[#1-#7] from "reach" 2000  
Cast-steel and rusted spoons  
Dimensions vary Editions of 15, #10  
AH04-2204-2210



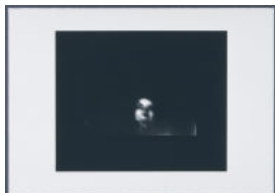
face...bobby 2003  
1-color photo-gravure  
Signed and numbered on verso  
29 1/2 x 42" Edition of 20, #11  
AH03-3350



face...inigo 2003  
1-color photo-gravure  
Signed and numbered on verso  
29 1/2 x 42" Edition of 20, #10  
AH03-3355



face...mr. innui 2003  
1-color photo-gravure  
Signed and numbered on verso  
29 1/2 x 42" Edition of 20, #11  
AH03-3356



face...susan 2003  
1-color photo-gravure  
Signed and numbered on verso  
29 1/2 x 42" Edition of 20, #11  
AH03-3357



GEMINI G.E.L. <sup>AI</sup> JONI MOISANT WEYL

P R I V A T E   S A L E  
July 12 – September 30, 2010

**MICHAEL HEIZER**

*Retail*



MONTANA SURVEY #1 1985  
2-color photo-etching/drypoint  
16 x 14 3/4" Edition of 42, #32  
MH81-3032

**JASPER JOHNS**

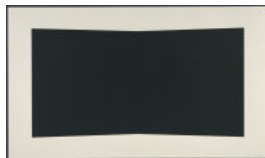


UNTITLED 1992  
8-color lithograph  
38 3/4 x 31 1/8" Edition of 74, #72  
JJ92-1305

**ELLSWORTH KELLY**



BLUE 2003  
1-color lithograph  
29 x 22 3/8" Edition of 45, #30  
EK03-1502



BLACK 2001  
1-color lithograph  
34 11/16 x 59 1/8" Edition of 45, #11  
EK01-1469



BLUE 2001  
1-color lithograph  
37 3/16 x 28 5/8" Edition of 45, #20  
EK01-1477



UNTITLED (RED) 1988  
2-color lithograph  
44 3/4 x 40 3/4" Edition of 18  
EK87-1170



GEMINI G.E.L. <sup>AT</sup> JONI MOISANT WEYL

P R I V A T E   S A L E  
July 12 – September 30, 2010

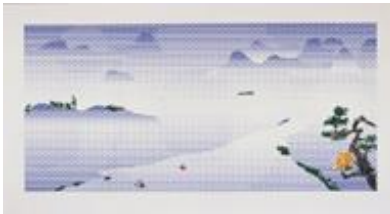
**TOBA KHEDOORI**

*Retail*



UNTITLED 2005  
1-color etching, printed & published  
to benefit Big Brothers Big Sisters of LA  
27 3/8 x 23 5/8" Edition of 50  
TK05-3406

**ROY LICHTENSTEIN**



LANDSCAPE WITH BOATS 1996  
12-color lithograph/screenprint  
34 1/4 x 64" Edition of 60, # 37  
RL95-5224

**BRICE MARDEN**



LINE MUSES 2001  
1-color etching/1-color lithograph  
22 x 30" Edition of 45, PP II  
BM99-1434

**MALCOLM MORLEY**



FOKKER DVII 2001  
19-color screenprint/lithograph  
45 1/4 x 32 1/4" Edition of 35, #19  
MM01-1463



GEMINI G.E.L. <sup>AI</sup> JONI MOISANT WEYL

P R I V A T E   S A L E  
July 12 – September 30, 2010

**MALCOLM MORLEY... continued**

*Retail*

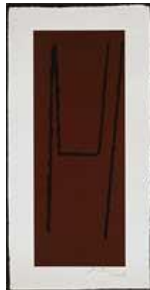


FOKKER DVIII 2001  
15-color lithograph/screenprint  
45 1/4 x 32 1/2" Edition of 35, #19  
MM01-1464



EROTIC FRUITOS 1993  
10-color intaglio  
47 3/4 x 35 1/2" Edition of 49, #22  
MM89-3149

**ROBERT MOTHERWELL**



ATASCADERO I 1978  
2-color lithograph  
36 x 18 1/2" Edition of 21, PP II  
RM73-546

**BRUCE NAUMAN**



SOFT GROUND ETCHING - YELLOW 2007  
2-color etching  
30 3/4 x 34" Edition of 50, #8  
BN06-3408





GEMINI G.E.L. <sup>AT</sup> JONI MOISANT WEYL

P R I V A T E   S A L E  
July 12 – September 30, 2010

**BRUCE NAUMAN...continued**

***Retail***



SOFT GROUND ETCHING - GREEN 2007  
2-color etching  
29 x 34 1/4" Edition of 50, #8  
BN06-3410



SOFT GROUND ETCHING - CORAL 2007  
2-color etching  
29 3/4 x 34" Edition of 50, #8  
BN06-3411



SOFT GROUND ETCHING - ROSE 2007  
2-color etching  
29 3/4 x 34" Edition of 50, #8  
BN06-3412



NECK PULL (from INFRARED OUTTAKES) 2006  
Photographed by Jack Fulton (1968)  
Epson UltraChrome K3 inkjet print  
20 x 28" Edition of 60  
BN06-9007



OPENED EYE (from INFRARED OUTTAKES) 2006  
Photographed by Jack Fulton (1968)  
Epson UltraChrome K3 inkjet print  
20 x 28" Edition of 60, #7  
BN06-9009



GEMINI G.E.L. <sup>AI</sup> JONI MOISANT WEYL

P R I V A T E   S A L E  
July 12 – September 30, 2010

**BRUCE NAUMAN...continued**

*Retail*



FLOOR DRAIN 1985  
1-color drypoint/aquatint  
39 1/8 x 28" Edition of 32, #4  
BN83-3085



PEARL MASQUE 1981  
1-color lithograph  
28 1/2 x 37 1/2" Edition of 50  
BN80-988

**CLAES OLDENBURG**



PROFITEROLE - GREY STATE 1990  
5-color lithograph  
31 x 40 1/2" Edition of 58  
CO89-1215



NOTES (KASSEL) 1968  
12-color lithograph/embossing  
22 11/16 x 15 3/4" Edition of 100, #6  
CO68-180

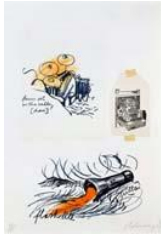


GEMINI G.E.L. <sup>AI</sup> JONI MOISANT WEYL

P R I V A T E   S A L E  
July 12 – September 30, 2010

**CLAES OLDENBURG...continued**

*Retail*



NOTES (DRUM SET) 1968  
9-color lithograph  
22 11/16 x 15 3/4" Edition of 100, #6  
CO68-183

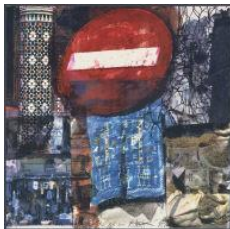
**DARRYL POTTORF**



SOAK AND WET DE MARRA KECH 2000  
8-color screenprint with  
pencil drawing  
36 x 27" Edition of 40, #23  
DP99-5274

**DARRYL POTTORF & ROBERT RAUSCHENBERG**

*Retail*



QUATTRO MANI / MARRAKECH III 2000  
18-color screenprint  
36 x 36" Edition of 50, #30  
DP/RR99-5271

**KEN PRICE**



CHAIRS, TABLE, RUG, CUP 1971  
14-color screenprint  
51 1/2 x 41 1/2" Edition of 75, #38  
KP71-5010



GEMINI G.E.L. <sup>AT</sup> JONI MOISANT WEYL

P R I V A T E   S A L E  
July 12 – September 30, 2010

**ROBERT RAUSCHENBERG**

*Retail*



VAMP 2000  
18-color screenprint  
23 1/2 x 31 1/2" Edition of 50, #27  
RR99-5268



L.A. UNCOVERED #11 1998  
11-color screenprint  
31 x 22 3/4" Edition of 56, #16  
RR98-5257



WITNESS (SPECULATIONS) 1996  
20-color screenprint  
68 1/2 x 31 1/2" Edition of 55, # 51  
RR94-5215



FENCE 1991  
4-color lithograph  
44 1/2 x 30" Edition of 57, #23  
RR91-1283



RUST PURSUIT 1991  
4-color lithograph  
30 x 44" Edition of 53  
RR91-1277



GEMINI G.E.L. <sup>AI</sup> JONI MOISANT WEYL

P R I V A T E   S A L E  
July 12 – September 30, 2010

**ROBERT RAUSCHENBERG...continued**

***Retail***



TIBETAN LOCKS (CURTAIN) 1987  
Multiple sculpture with photo-screened decals  
and handpainting on steel  
30 x 30 x 11 1/2" Edition of 21, AC 5  
RR86-2143



ROOKERY MOUNDS-LEVEL 1979  
4-color lithograph  
41 x 31" Edition of 50, #18  
RR79-900



ROOKERY MOUNDS-CRYSTAL 1979  
3-color lithograph  
41 x 31" Edition of 50  
RR79-898



ROMANCES (POMEGRANATE) 1977  
4-color lithograph  
41 3/4 x 31 1/2" Edition of 37, #1  
RR77-835



EARTH CRUST 1969  
2-color lithograph  
34 x 25" Edition of 42, #15  
RR69-287



GEMINI G.E.L. <sup>AT</sup> JONI MOISANT WEYL

P R I V A T E   S A L E  
July 12 – September 30, 2010

**DOROTHEA ROCKBURNE**

*Retail*



W.I.M.P. #2 1999  
9-color lithograph/screenprint  
41 x 32" Edition of 39, #15  
DR98-1411

**JAMES ROSENQUIST**



"WHEN A LEAK...B&W" 1982  
7-color lithograph  
50 1/2 x 59" Edition of 25, #16  
JR80-969A

**SUSAN ROTHENBERG**



PUPPET SERIES #1 2008  
1-color mezzotint  
16 1/2 x 16" Edition of 50, #17  
SR08-3434



PUPPET SERIES #2 2008  
1-color mezzotint  
16 1/2 x 16" Edition of 50, #17  
SR08-3435



PUPPET SERIES #3 2008  
1-color mezzotint  
16 1/2 x 16" Edition of 50, #17  
SR08-3445



GEMINI G.E.L. <sup>AI</sup> JONI MOISANT WEYL

P R I V A T E   S A L E  
July 12 – September 30, 2010

**SUSAN ROTHENBERG**...continued

**Retail**



PUPPET SERIES #4 2008  
1-color mezzotint  
16 1/2 x 16" Edition of 50, #17  
SR08-3446



LEAN TO 2008  
1-color mezzotint  
16 1/2 x 16" Edition of 50, #17  
SR08-3447



TILT UP 2008  
1-color mezzotint  
16 1/2 x 16" Edition of 50, #17  
SR08-3448



SLIP 2003  
6-color lithograph  
37 1/4 x 42" Edition of 56, #24  
SR02-1494



SLIP (STATE) 2003  
3-color lithograph  
31 x 41 1/8" Edition of 17, #9  
SR02-1494A



GROUP 2003  
1-color lithograph  
35 1/2 x 28 1/2" Edition of 60, #24  
SR02-1495



GEMINI G.E.L. <sup>AT</sup> JONI MOISANT WEYL

P R I V A T E   S A L E  
July 12 – September 30, 2010

**ED RUSCHA**

*Retail*

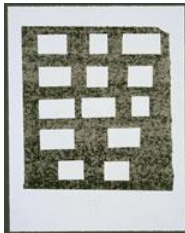


STICK UP... 2007  
3-color lithograph  
19 1/2 x 15 1/2" Edition of 35, #5  
ER06-1534



LISTEN IF YOU EVER TELL... 2007  
3-color lithograph  
19 1/2 x 15 1/2" Edition of 35, #5  
ER06-1535

2,800



IF I WAS YOU... 2007  
3-color lithograph  
19 1/2 x 15 1/2" Edition of 35, #5  
ER06-1536

2,800



A COLUMBIAN NECKLACE... 2007  
4-color lithograph  
19 1/2 x 15 1/2" Edition of 35, #5  
ER06-1537



I HAVE NOT FORGOTTEN 2007  
2-color lithograph  
19 1/2 x 15 1/2" Edition of 35, #5  
ER06-1538





GEMINI G.E.L. <sup>AT</sup> JONI MOISANT WEYL

P R I V A T E   S A L E  
July 12 – September 30, 2010

**RICHARD SERRA**

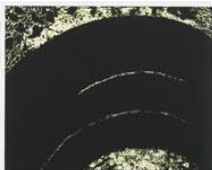
*Retail*



PATHS AND EDGES #3 2007  
1-color etching  
25 3/4" x 39" (66 x 100.3 cm)  
edition of 60  
RS07-3415



PATHS AND EDGES #4 2007  
1-color etching  
Signed and numbered on verso  
22 3/4 x 33 1/2" Edition of 60  
RS07-3416

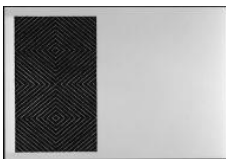


PATHS AND EDGES #8 2007  
1-color etching  
23 1/2" x 29 1/2" (61 x 76.2 cm)  
edition of 60  
RS07-3420

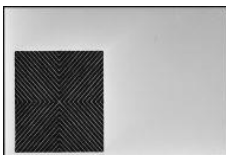


PATHS AND EDGES #10 2007  
1-color etching  
Signed and numbered on verso  
18 3/4 x 25 1/2" Edition of 60, #35  
RS07-3422

**FRANK STELLA**



TUXEDO PARK 1967  
1-color lithograph  
15 x 22" Edition of 100  
FS67-142



ZAMBESI 1967  
1-color lithograph  
15 x 22" Edition of 100  
FS67-144