



GEMINI G.E.L. ^{AT} JONI MOISANT WEYL

P R I V A T E S A L E

July 11 – October 1, 2011

Sale pricing quoted upon request; all prices include frame unless noted

RICHARD ARTSCHWAGER

Retail



THE DISCOVERY OF UP AND DOWN 2008
1-color etching
46 x 32 3/4" Edition of 35, #18
RA08-3432



THE DISCOVERY OF RIGHT AND LEFT 2008
1-color etching
18 1/2 x 24" Edition of 35, #18
RA08-3433

JOHN BALDESSARI



RAISED EYEBROWS / FURROWED FOREHEADS:
FIGURE WITH GLOBE 2009
14-color screenprint
32 x 31" Edition of 70, #20
JBA09-5328



NOSES & EARS, ETC.: TWO PROFILES, ONE WITH
NOSE (B&W); ONE WITH EAR (B&W) 2006
2-layer, 7-color screenprint construction
(mounted to Sintra and hand cut)
framed 34 3/4 x 62 1/2 x 3" Edition of 45, #7
JBA06-5307

JONATHAN BOROFSKY



MALE / FEMALE 2000
1-color lithograph/4-color screenprint
63 x 43" Edition of 35, #22
JB99-1428



GEMINI G.E.L. ^{AT} JONI MOISANT WEYL

P R I V A T E S A L E

July 11 – October 1, 2011

Sale pricing quoted upon request; all prices include frame unless noted

CECILY BROWN

Retail



AUJOURD' HUI ROSE 2005
4-color lithograph
39 x 29 1/2" Edition of 75, #14
CBR05-1528



UNTITLED 2005
10-color lithograph
40 x 29 1/2" Edition of 35, #14
CBR05-1530

VIJA CELMINS



NIGHT SKY 1 (REVERSED) 2002
3-color photogravure/aquatint/
photo-etching/drypoint
21 x 24 1/2" Edition of 65, #51
VC02-3333



NIGHT SKY 2 (REVERSED) 2002
3-color photogravure/aquatint/
photo-etching/drypoint
20 3/4 x 24 1/2" Edition of 65, #21
VC02-3336



UNTITLED (WEB 4) 2002
1-color photogravure/aquatint/drypoint
20 1/2 x 24 1/4" Edition of 65, #20
VC02-3335



GEMINI G.E.L. ^{AT} JONI MOISANT WEYL

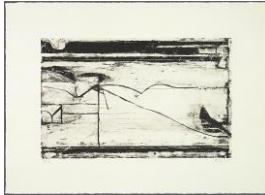
P R I V A T E S A L E

July 11 – October 1, 2011

Sale pricing quoted upon request; all prices include frame unless noted

RICHARD DIEBENKORN

Retail



UNTITLED #2 1993
1-color lithograph
Estate stamped
11 x 15" Edition of 53, #52
RiDi92-1330

SAM FRANCIS



TURN 1972
7-color screenprint
28 x 35" Edition of 70, AP 9
SF72-5019

ALLEN GINSBERG



UNTITLED #3 1998
6-color lithograph/screenprint
Estate Stamped
30 1/4 x 23 1/4" Edition of 36, #28
AG96-5238

ROBERT GOBER



UNTITLED 2002
4-color lithograph
51 x 36" Edition of 65, #16
ROGO01-1485



GEMINI G.E.L. ^{AT} JONI MOISANT WEYL

P R I V A T E S A L E

July 11 – October 1, 2011

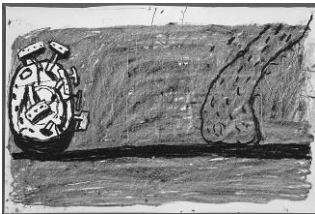
Sale pricing quoted upon request; all prices include frame unless noted

PHILIP GUSTON

Retail



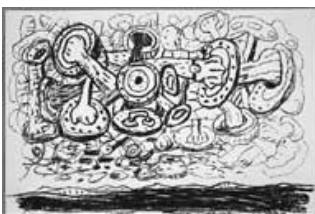
REMAINS 1981
1-color lithograph
Estate Stamped
19 1/2 x 29 3/4" Edition of 50, #17
PG79-936



SCENE 1981
1-color lithograph
20 x 29 3/4" Edition of 50, #40
PG79-930



RUG 1980
1-color lithograph
19 1/2 x 29" Edition of 50, #7
PG79-929



SKY 1983
1-color lithograph
20 x 29 3/4" Edition of 50, AP 10
PG79-928

ANN HAMILTON



gauge (black) 2007
2-color lithograph/screenprint
38 x 56" Edition of 16, #12
AH07-1554



GEMINI G.E.L. ^{AT} JONI MOISANT WEYL

P R I V A T E S A L E

July 11 – October 1, 2011

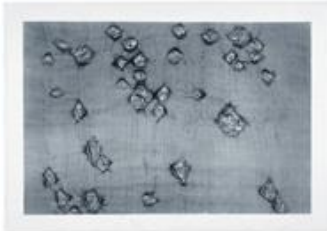
Sale pricing quoted upon request; all prices include frame unless noted

ANN HAMILTON - continued

Retail



score 2007
2 cast-resin ear trumpets and unique grouping
of 6 prints housed in wooden writing desk
7 x 26 x 26" Edition of 15, #8
AH06-2217



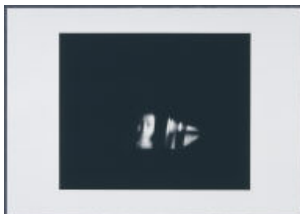
warp & weft II 2007
1-color lithograph
38 1/2 x 56" Edition of 10, #10
AH07-1560



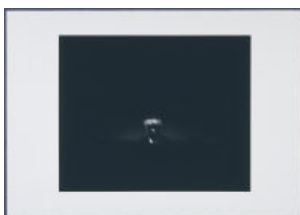
[#1-#7] from "reach" 2000
Cast-steel and rusted spoons
Dimensions vary Editions of 15, #10
AH04-2204-2210



face...emmett 2003
1-color photo-gravure
Signed and numbered on verso
29 1/2 x 42" Edition of 20, #11
AH03-3343



face...inigo 2003
1-color photo-gravure
Signed and numbered on verso
29 1/2 x 42" Edition of 20
AH03-3355



face...mr. innui 2003
1-color photo-gravure
Signed and numbered on verso
29 1/2 x 42" Edition of 20, #11
AH03-3356



GEMINI G.E.L. ^{AT} JONI MOISANT WEYL

P R I V A T E S A L E

July 11 – October 1, 2011

Sale pricing quoted upon request; all prices include frame unless noted

MICHAEL HEIZER

Retail



MONTANA SURVEY #1 1985
2-color photo-etching/drypoint
16 x 14 3/4" Edition of 42, #36
MH81-3032

DAVID HOCKNEY



SUN 1973
8-color lithograph/silkscreen
37 1/4" x 30 5/8" Edition of 98, #90
DH73-501



PETER SCHLESINGER 1976
1-color lithograph
16 x 11 3/4" Edition of 90, #64
DH76-773

JASPER JOHNS



UNTITLED 1992
8-color lithograph
38 7/8 x 31 1/8" Edition of 74, #72
JJ92-1305



GEMINI G.E.L. ^{AT} JONI MOISANT WEYL

P R I V A T E S A L E

July 11 – October 1, 2011

Sale pricing quoted upon request; all prices include frame unless noted

DONALD JUDD



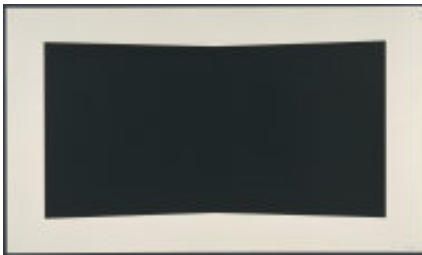
UNTITLED 1971
Stainless steel and acrylic
4 x 23 x 27" Edition of 50, #21
DJ71-2028

ELLSWORTH KELLY

Retail



BLACK CURVE 2000
1-color lithograph
30 x 22 7/8" Edition of 35, #26
EK99-1450



BLACK 2001
1-color lithograph
34 11/16 x 59 1/8" Edition of 45
EK01-1469

TOBA KHEDOORI



UNTITLED 2005
1-color etching, printed & published
to benefit Big Brothers Big Sisters of LA
27 3/8 x 23 5/8" Edition of 50
TK05-3406



GEMINI G.E.L. ^{AT} JONI MOISANT WEYL

P R I V A T E S A L E

July 11 – October 1, 2011

Sale pricing quoted upon request; all prices include frame unless noted

ROY LICHTENSTEIN

Retail



LA SORTIE 1991
6-color woodcut
58 1/2 x 81 inches Edition of 60, #40
RL90-1221

MALCOLM MORLEY

Retail



FOKKER DVII 2001
19-color screenprint/lithograph
45 1/4 x 32 1/4" Edition of 35, #19
MM01-1463



FOKKER DVIII 2001
15-color lithograph/screenprint
45 1/4 x 32 1/2" Edition of 35, #19
MM01-1464



EROTIC FRUITOS 1993
10-color intaglio
47 3/4 x 35 1/2" Edition of 49, #22
MM89-3149



GEMINI G.E.L. ^{AT} JONI MOISANT WEYL

P R I V A T E S A L E

July 11 – October 1, 2011

Sale pricing quoted upon request; all prices include frame unless noted

ELIZABETH MURRAY

Retail



LULU LEAPS 1995
5-color intaglio
sheet 12 3/4 x 10 1/2" Edition of 39, #21
EM94-3220

BRUCE NAUMAN



SOFT GROUND ETCHING - YELLOW 2007
2-color etching
30 3/4 x 34" Edition of 50, #8
BN06-3408



SOFT GROUND ETCHING - GREEN 2007
2-color etching
29 x 34 1/4" Edition of 50, #8
BN06-3410



COCKEYE LIPS (from INFRARED OUTTAKES) 2006
Photographed by Jack Fulton (1968)
Epson UltraChrome K3 inkjet print
20 x 28" Edition of 60, #7
BN06-9006



OPENED EYE (from INFRARED OUTTAKES) 2006
Photographed by Jack Fulton (1968)
Epson UltraChrome K3 inkjet print
20 x 28" Edition of 60, #7
BN06-9009



UNTITLED (From "Fingers and Holes" series) 1994
Monoprint produced from screen matrix
(color of each print varies)
35 1/4 x 35" Edition of 90, #60
BN94-182



GEMINI G.E.L. ^{AT} JONI MOISANT WEYL

P R I V A T E S A L E

July 11 – October 1, 2011

Sale pricing quoted upon request; all prices include frame unless noted

BRUCE NAUMAN - continued

Retail



VERSO RECTO (STATE I) 1998
3-color lithograph/screenprint
22 1/4 x 28 1/2" Edition of 50, #21
BN98-3266A



VERSO RECTO (STATE II) 1998
2-color lithograph/screenprint
22 1/4 x 28 3/4" Edition of 50, #21
BN98-3266B



HOLDING HANDS ALL THUMBS 1998
1-color etching
22 1/2 x 28" Edition of 50, #21
BN98-3268



FLOOR DRAIN 1985
1-color drypoint/aquatint
39 1/8 x 28" Edition of 32, #4
BN83-3085

CLAES OLDENBURG



PROFITEROLE - GREY STATE 1990
5-color lithograph
31 x 40 1/2" Edition of 58, #46
CO89-1215



GEMINI G.E.L. ^{AI} JONI MOISANT WEYL

P R I V A T E S A L E

July 11 – October 1, 2011

Sale pricing quoted upon request; all prices include frame unless noted

CLAES OLDENBURG – continued

Retail



NOTES (KASSEL) 1968
12-color lithograph/embossing
22 11/16 x 15 3/4" Edition of 100, #6
CO68-180



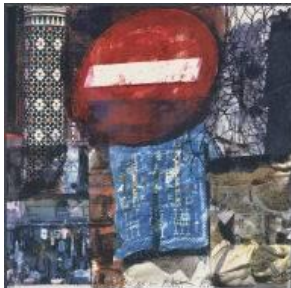
NOTES (DRUM SET) 1968
9-color lithograph
22 11/16 x 15 3/4" Edition of 100, #6
CO68-183

DARRYL POTTORF



SOAK AND WET DE MARRA KECH 2000
8-color screenprint with Opencil drawing
36 x 27" Edition of 40, #23
DP99-5274

DARRYL POTTORF & ROBERT RAUSCHENBERG



QUATTRO MANI / MARRAKECH III 2000
18-color screenprint
36 x 36" Edition of 50, #30
DP/RR99-5271



GEMINI G.E.L. ^{AT} JONI MOISANT WEYL

P R I V A T E S A L E

July 11 – October 1, 2011

Sale pricing quoted upon request; all prices include frame unless noted

KEN PRICE

Retail



GREEN TURTLE CUP 1971
19-color screenprint
57 x 40" Edition of 75, #49
KP71-5007



CHAIRS, TABLE, RUG, CUP 1971
14-color screenprint
51 1/2 x 41 1/2" Edition of 75, #38
KP71-5010

ROBERT RAUSCHENBERG



GOSSIP 2000
11-color screenprint
29 3/4 x 22" Edition of 50, #35
RR99-5267



REUNION 2000
12-color screenprint
31 1/2 x 23" Edition of 50, #34
RR99-5260



GEMINI G.E.L. ^{AT} JONI MOISANT WEYL

P R I V A T E S A L E

July 11 – October 1, 2011

Sale pricing quoted upon request; all prices include frame unless noted

ROBERT RAUSCHENBERG - continued

Retail



FENCE 1991
4-color lithograph
44 1/2 x 30" Edition of 57, #23
RR91-1283



RUST PURSUIT 1991
4-color lithograph
30 x 44" Edition of 53, #37
RR91-1277



TRUTH 1982
Unique paper and fabric collage made in the
People's Republic of China
30 1/2 x 26 1/2" Series of 70 unique works
RR82-14



TIBETAN LOCKS (CURTAIN) 1986
Multiple sculpture with photo-screened decals
and handpainting on steel
30 x 30 x 11 1/2" Edition of 21, AC 5
RR86-2143



ROOKERY MOUNDS-LEVEL 1979
4-color lithograph
41 x 31" Edition of 50, #18
RR79-900



GEMINI G.E.L. ^{AT} JONI MOISANT WEYL

P R I V A T E S A L E

July 11 – October 1, 2011

Sale pricing quoted upon request; all prices include frame unless noted

ROBERT RAUSCHENBERG - continued

Retail



ROOKERY MOUNDS-CRYSTAL 1979
3-color lithograph
41 x 31" Edition of 50, #54
RR79-898



ROOKERY MOUNDS - GRAY GARDEN 1979
4-color lithograph
41 x 31" Edition of 55, #27
RR79-896



RINGER 1974
Transfer collage on fabric
70 x 36" Edition of 31, #28
RR74-686



HORSEFEATHERS THIRTEEN - IV 1972
Color lithograph/screen/pochoir/
embossing with unique collage
27 7/8 x 22 1/2" Edition of 89, #75
RR72-473



GEMINI G.E.L. ^{AT} JONI MOISANT WEYL

P R I V A T E S A L E

July 11 – October 1, 2011

Sale pricing quoted upon request; all prices include frame unless noted

DOROTHEA ROCKBURNE

Retail



W.I.M.P. #2 1999
9-color lithograph/screenprint
41 x 32" Edition of 39, #15
DR98-1411



DEVINE RAY 1983
9-color lithograph on Transpagra, printed both
sides, mounted on 100% ragboard
40 x 35" Edition of 44, #10
DR81-1019

JAMES ROSENQUIST



APPEARANCE 1982
2-color aquatint/drypoint/etching
33 1/2 x 26 1/2" Edition of 59, #36
JR80-3043



"WHEN A LEAK...B&W" 1982
7-color lithograph
50 1/2 x 59" Edition of 25, #16
JR80-969A



GEMINI G.E.L. ^{AT} JONI MOISANT WEYL

P R I V A T E S A L E

July 11 – October 1, 2011

Sale pricing quoted upon request; all prices include frame unless noted

SUSAN ROTHENBERG

Retail



PUPPET SERIES #1 2008
1-color mezzotint
16 1/2 x 16" Edition of 50, #17
SR08-3434



PUPPET SERIES #2 2008
1-color mezzotint
16 1/2 x 16" Edition of 50, #17
SR08-3435



SLIP 2003
6-color lithograph
37 1/4 x 42" Edition of 56, #24
SR02-1494



SLIP (STATE) 2003
3-color lithograph
31 x 41 1/8" Edition of 17, #9
SR02-1494A



GROUP 2003
1-color lithograph
35 1/2 x 28 1/2" Edition of 60, #24
SR02-1495



GEMINI G.E.L. ^{AT} JONI MOISANT WEYL

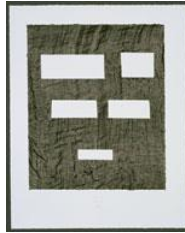
P R I V A T E S A L E

July 11 – October 1, 2011

Sale pricing quoted upon request; all prices include frame unless noted

ED RUSCHA

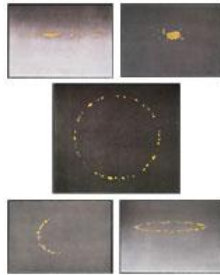
Retail



STICK UP... 2007
3-color lithograph
19 1/2 x 15 1/2" Edition of 35, #20
ER06-1534



LISTEN IF YOU EVER TELL... 2007
3-color lithograph
19 1/2 x 15 1/2" Edition of 35, #20
ER06-1535



VARIOUS CHEESES 1976
Complete set of 5 lithographs
Dimensions vary Edition sizes vary, RTP
ER75-732-736

RICHARD SERRA



PATHS AND EDGES #9 2007
1-color etching
Signed and numbered on verso
20 x 26 1/2" Edition of 60
RS07-3421



TRAJECTORY #1 2004
1-color etching
67 x 48" Edition of 48, #13
RS04-3376