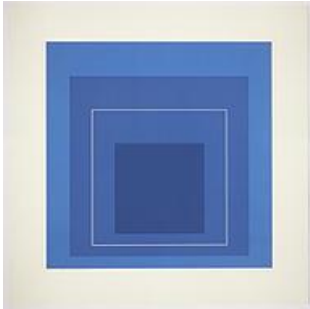




GEMINI G.E.L. <sup>AT</sup> JONI MOISANT WEYL

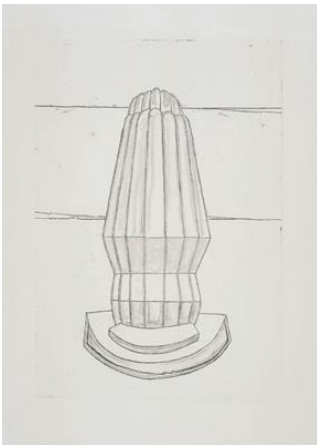
S U M M E R S A I L I N G  
June 1 – September 8, 2012

**JOSEF ALBERS**



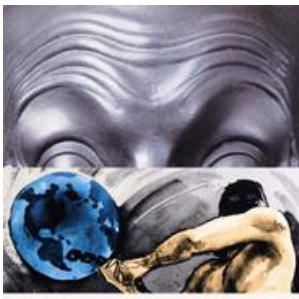
WHITE LINE SQUARE XIII 1966  
3-color lithograph  
21 x 21" (53.3 x 53.3 cm)  
Edition of 125, #94  
JA66-1163

**RICHARD ARTSCHWAGER**



THE DISCOVERY OF UP AND DOWN 2008  
1-color etching  
46 x 32 3/4" (116.8 x 83.2 cm)  
Edition of 35, #18  
RA08-3432

**JOHN BALDESSARI**



RAISED EYEBROWS / FURROWED FOREHEADS /  
FIGURE WITH GLOBE 2009  
14-color screenprint  
32 x 31" (81.3 x 78.7 cm)  
Edition of 70  
JBA09-5328



GEMINI G.E.L. <sup>AT</sup> JONI MOISANT WEYL

S U M M E R S A I L I N G  
June 1 – September 8, 2012

**JOHN BALDESSARI** – continued

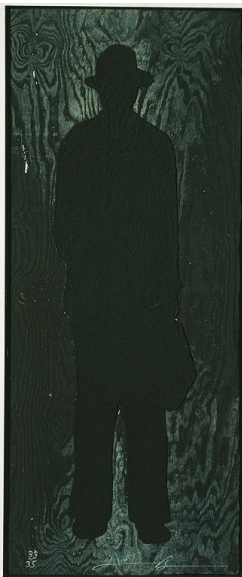


NOSES & EARS, ETC.: THE GEMINI SERIES: TWO PROFILES, ONE WITH NOSE (B&W); ONE WITH EAR (B&W) 2006  
2-layer, 7-color screenprint construction  
(mounted to Sintra and hand cut)  
framed 34 3/4 x 62 1/2 x 3"  
(88.6 x 158.4 x 7.6 cm)  
Edition of 45, #7  
JBA06-5307

**JONATHAN BOROFKY**



MALE / FEMALE 2000  
1-color lithograph/4-color screenprint  
63 x 43" (160.0 x 109.2 cm)  
Edition of 35, #22  
JB99-1428



MAN WITH A BRIEFCASE (A) 1991  
Woodcut on handmade paper with collage  
92 x 39" (233.7 x 99.1 cm)  
Edition of 35, #14  
JB90-1252



GEMINI G.E.L. <sup>AT</sup> JONI MOISANT WEYL

S U M M E R S A I L I N G  
June 1 – September 8, 2012

**CECILY BROWN**



AUJOURD'HUI ROSE 2005  
4-color lithograph  
39 x 29 1/2" (99.1 x 74.9 cm)  
Edition of 75, #14  
CBR05-1528

**VIJA CELMINS**



UNTITLED (WEB 4) 2002  
1-color photogravure/aquatint/drypoint  
20 1/2 x 24 1/4" (52.1 x 61.6 cm)  
Edition of 65, #20  
VC02-3335

**SAM FRANCIS**



SPECK 1971  
7-color lithograph  
Signed and numbered on verso  
34 x 46 1/4" (86.4 x 117.5 cm)  
Edition of 42, AP 4  
SF71-410

**ALLEN GINSBERG**



UNTITLED #3 1998  
6-color lithograph/screenprint  
Estate Stamped  
30 1/4 x 23 1/4" (76.8 x 59.1 cm)  
Edition of 36, #28  
AG96-5238



GEMINI G.E.L. <sup>AT</sup> JONI MOISANT WEYL

S U M M E R S A I L I N G  
June 1 – September 8, 2012

ROBERT GOBER



UNTITLED 2000  
1-color lithograph  
30 x 44 1/4" (76.2 x 112.4 cm)  
Edition of 50, #36  
RoGo99-1436



UNTITLED 2000  
2-color lithograph/2-color screenprint/  
embossment, with hand drawing and erasure  
30 x 43 1/2" (76.2 x 110.5 cm)  
Edition of 47, #36  
RoGo99-1437



UNTITLED 2000  
1-color lithograph  
38 x 46 1/2" (96.5 x 118.1 cm)  
Edition of 50, #36  
RoGo00-1453



Side A

UNTITLED 1997  
2-color lithograph  
11 1/4 x 14" (28.6 x 35.6 cm)  
Edition of 40, PP II  
RoGo97-1404



Side B



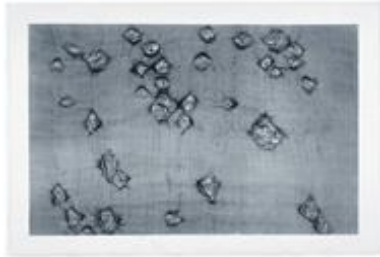
GEMINI G.E.L. <sup>AT</sup> JONI MOISANT WEYL

S U M M E R S A I L I N G  
June 1 – September 8, 2012

**ANN HAMILTON**



gauge (black) 2007  
2-color lithograph/screenprint  
38 x 56" (96.5 x 142.2 cm)  
Edition of 16, #13  
AH07-1554



warp & weft II 2007  
1-color lithograph  
38 1/2 x 56" (97.8 x 142.2 cm)  
Edition of 10, #10  
AH07-1560



score 2007  
2 cast-resin ear trumpets and unique grouping  
of 6 prints housed in wooden writing desk  
7 x 26 x 26" (17.8 x 66.0 x 66.0 cm)  
Edition of 15, #8  
AH06-2217



[#1-#7] from "reach" 2000  
Cast-steel and rusted spoons  
Dimensions vary  
Editions of 15, #10  
AH04-2204-2210



face...bobby 2003  
1-color photo-gravure  
Signed and numbered on verso  
29 1/2 x 42" (74.9 x 106.7 cm)  
Edition of 20, #11  
AH03-3350

*Please inquire about others from this series*



GEMINI G.E.L. <sup>AT</sup> JONI MOISANT WEYL

S U M M E R S A I L I N G  
June 1 – September 8, 2012

**JASPER JOHNS**



UNTITLED 1992  
8-color lithograph  
38 7/8 x 31 1/8" (98.4 x 79.1 cm)  
Edition of 74, #72  
JJ92-1305



LAND'S END 1979  
1-color lithograph  
52 x 36" (132.1 x 91.4 cm)  
Edition of 70, #5  
JJ78-845

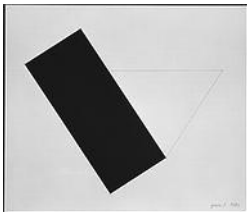
**ELLSWORTH KELLY**



BLACK CURVE 2000  
1-color lithograph  
30 x 22 7/8" (76.2 x 58.1 cm)  
Edition of 35, #26  
EK99-1450



DARK GRAY CURVE 1988  
2-color lithograph  
26 x 84" (66.0 x 213.4 cm)  
Edition of 25, #11  
EK87-1175



MARIGOT 1979  
2-color lithograph  
30 x 34 1/2" (76.2 x 87.6 cm)  
Edition of 25, #5  
EK78-876



GEMINI G.E.L. <sup>AT</sup> JONI MOISANT WEYL

S U M M E R S A I L I N G  
June 1 – September 8, 2012

**TOBA KHEDOORI**



UNTITLED 2005  
1-color etching  
Printed & published to benefit Big Brothers Big Sisters of LA  
27 3/8 x 23 5/8" (69.5 x 60.0 cm)  
Edition of 50  
TK05-3406

**ROY LICHTENSTEIN**



LA SORTIE 1991  
6-color woodcut  
58 1/2 x 81" (148.6 x 205.7 cm)  
Edition of 60, #40  
RL90-1221



IMPERFECT 44 3/4" x 103" 1988  
25-color woodcut/screenprint/collage  
44 3/4 x 103" (113.7 x 261.6 cm)  
Edition of 45, #36  
RL87-1153



VIEW FROM THE WINDOW 1985  
40-color lithograph/woodcut/screenprint  
79 9/16 x 33 9/16" (202.1 x 85.2 cm)  
Edition of 60, #36  
RL85-1121





GEMINI G.E.L. <sup>AT</sup> JONI MOISANT WEYL

S U M M E R S A I L I N G  
June 1 – September 8, 2012

**ROY LICHTENSTEIN** - continued



PEACE THROUGH CHEMISTRY BRONZE 1971  
Bronze wall relief  
27 1/4 x 46 1/4 x 1 1/4"  
(69.2 x 117.5 x 3.2 cm)  
Edition of 38  
RL70-2002

**MALCOLM MORLEY**



FOKKER DVIII 2001  
15-color lithograph/screenprint  
45 1/4 x 32 1/2" (114.9 x 82.5 cm)  
Edition of 35, #19  
MM01-1464



FOKKER DVII 2001  
19-color screenprint/lithograph  
45 1/4 x 32 1/4" (114.9 x 81.9 cm)  
Edition of 35, #19  
MM01-1463



EROTIC FRUITOS 1993  
10-color intaglio  
47 3/4 x 35 1/2" (121.3 x 90.2 cm)  
Edition of 49, #22  
MM89-3149





GEMINI G.E.L. <sup>AT</sup> JONI MOISANT WEYL

S U M M E R S A I L I N G  
June 1 – September 8, 2012

**BRUCE NAUMAN**



SOFT GROUND ETCHING - YELLOW 2007  
2-color etching  
30 3/4 x 34" (78.1 x 86.4 cm)  
Edition of 50, #8  
BN06-3408



SOFT GROUND ETCHING - GREEN 2007  
2-color etching  
29 x 34 1/4" (73.7 x 87.0 cm)  
Edition of 50, #8  
BN06-3410



SOFT GROUND ETCHING - ROSE 2007  
2-color etching  
29 3/4 x 34" (75.6 x 95.0 cm)  
Edition of 50, #8  
BN06-3412



COCKEYE LIPS (from INFRARED OUTTAKES) 2006  
Photographed by Jack Fulton (1968)  
Epson UltraChrome K3 inkjet print  
20 x 28" (50.8 x 71.1 cm)  
Edition of 60, #7  
BN06-9006



OPENED EYE (from INFRARED OUTTAKES) 2006  
Photographed by Jack Fulton (1968)  
Epson UltraChrome K3 inkjet print  
20 x 28" (50.8 x 71.1 cm)  
Edition of 60, #26  
BN06-9009



PARTIAL TRUTH 1999  
Embossment from granite stone  
19 1/8 x 24 1/2" (48.6 x 62.2 cm)  
Edition of 60, #33  
BN98-3293



GEMINI G.E.L. <sup>AT</sup> JONI MOISANT WEYL

S U M M E R S A I L I N G  
June 1 – September 8, 2012

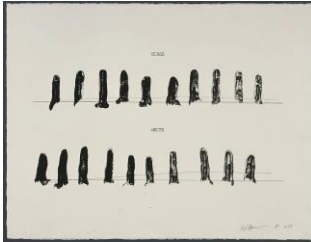
**BRUCE NAUMAN** - continued



HOLDING HANDS ALL THUMBS 1998  
1-color etching  
22 1/4 x 27 3/4" (56.5 x 70.5 cm)  
Edition of 50, #21  
BN98-3268



VERSO RECTO (STATE I) 1998  
3-color lithograph/screenprint  
22 1/4 x 28 1/2" (56.5 x 72.4 cm)  
Edition of 50, #21  
BN98-3266A



VERSO RECTO (STATE II) 1998  
2-color lithograph/screenprint  
22 1/4 x 28 3/4" (56.5 x 73.0 cm)  
Edition of 50, #21  
BN98-3266B



PARTIAL TRUTH 1997  
Black Absolute granite, hand carved  
18 x 24 x 2" (45.7 x 61.0 x 5.1 cm)  
Edition of 25, #16  
BN97-2181



UNTITLED (From "Fingers and Holes" series) 1994  
Monoprint produced from screen matrix  
(color of each print varies)  
35 1/4 x 35" (89.5 x 88.9 cm)  
Series of 90 unique works  
BN94-182 (#60)



GEMINI G.E.L. <sup>AT</sup> JONI MOISANT WEYL

S U M M E R S A I L I N G  
June 1 – September 8, 2012

**BRUCE NAUMAN** - continued



FLOOR DRAIN 1985  
1-color drypoint/aquatint  
39 1/8 x 28" (99.4 x 71.1 cm)  
Edition of 32, #4  
BN83-3085

**CLAES OLDENBURG**



PERFUME ATOMIZER ON A PILLOW 1997  
8-color lithograph with embossing  
22 1/2 x 28" (57.2 x 71.1 cm)  
Edition of 36, PP II  
CO92-1338



SOFT LIGHT BULB (NIGHT) 1994  
1-color lithograph with chine-collé  
31 3/4 x 24" (80.6 x 61.0 cm)  
Edition of 35, PP II  
CO92-1341B



PROFITEROLE - GREY STATE 1990  
5-color lithograph  
31 x 40 1/2" (78.7 x 102.9 cm)  
Edition of 58, #10  
CO89-1215



NOTES (KASSEL) 1968  
12-color lithograph/embossing  
22 11/16 x 15 3/4" (57.6 x 40.0 cm)  
Edition of 100, #6  
CO68-180



GEMINI G.E.L. <sup>AT</sup> JONI MOISANT WEYL

S U M M E R S A I L I N G  
June 1 – September 8, 2012

**DARRYL POTTORF & ROBERT RAUSCHENBERG**



QUATTRO MANI / MARRAKECH III 2000  
18-color screenprint  
36 x 36" (91.4 x 91.4 cm)  
Edition of 50, #30  
DP/RR99-5271

**KEN PRICE**



BOLIVAR 1998  
Fired and uniquely painted clay  
7 1/2 x 8 x 6" (19.1 x 20.3 x 15.2 cm)  
Edition of 25, #7  
KP98-2183



THE FIREWORM CUP 1991  
Earthenware with hand-painted glaze  
in wooden display box  
3 7/8 x 6 1/4 x 3 1/4" (9.8 x 15.9 x 8.3 cm)  
Edition of 25, #3  
KP91-2177



GREEN TURTLE CUP 1971  
19-color screenprint  
57 x 40" (144.8 x 101.6 cm)  
Edition of 75, #49  
KP71-5007



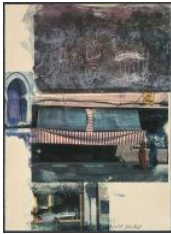
CHAIRS, TABLE, RUG, CUP 1971  
14-color screenprint  
51 1/2 x 41 1/2" (130.8 x 105.4 cm)  
Edition of 75, #38  
KP71-5010



GEMINI G.E.L. <sup>AT</sup> JONI MOISANT WEYL

S U M M E R S A I L I N G  
June 1 – September 8, 2012

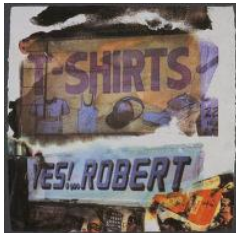
**ROBERT RAUSCHENBERG**



GOSSIP 2000  
11-color screenprint  
29 3/4 x 22" (75.6 x 55.9 cm)  
Edition of 50, #35  
RR99-5267



REUNION 2000  
12-color screenprint  
31 1/2 x 23" (80.0 x 58.4 cm)  
Edition of 50, #34  
RR99-5260



L.A. UNCOVERED #1 1998  
11-color screenprint  
20 1/2 x 20 1/4" (52.1 x 51.4 cm)  
Edition of 56, PP II  
RR98-5256



FENCE 1991  
4-color lithograph  
44 1/2 x 30 1/4" (113.0 x 76.8 cm)  
Edition of 57, #23  
RR91-1283



RUST PURSUIT 1991  
4-color lithograph  
30 x 44" (76.2 x 111.8 cm)  
Edition of 53, #37  
RR91-1277



TIBETAN LOCKS (CURTAIN) 1986  
Edition wall relief with photoscreened decals, hand-painting on steel, powder-coating and polyurethane  
30 x 30 x 11 1/2" (76.2 x 76.2 x 29.2 cm)  
Edition of 21, AC 5  
RR86-2143



GEMINI G.E.L. <sup>AT</sup> JONI MOISANT WEYL

S U M M E R S A I L I N G  
June 1 – September 8, 2012

**ROBERT RAUSCHENBERG** - continued



TRUTH 1982  
Unique paper and fabric collage made in the  
People's Republic of China  
30 1/2 x 26 1/2" (77.5 x 67.3 cm)  
Series of 70 unique works  
RR82-14



AMERICAN PEWTER WITH BURROUGHS V 1981  
4-color lithograph/embossing  
31 3/4 x 23 1/4" (80.6 x 59.1 cm)  
Edition of 48, #10  
RR81-1013



ROOKERY MOUNDS - CRYSTAL 1979  
3-color lithograph  
41 x 31" (104.1 x 78.7 cm)  
Edition of 55, #54  
RR79-898



ROOKERY MOUNDS - GRAY GARDEN 1979  
4-color lithograph  
41 x 31" (104.1 x 78.7 cm)  
Edition of 55, #37  
RR79-896



ROMANCES (PROPHECY) 1977  
4-color lithograph  
29 x 40 1/2" (73.7 x 102.9 cm)  
Edition of 38, #7  
RR77-838





GEMINI G.E.L. <sup>AT</sup> JONI MOISANT WEYL

S U M M E R S A I L I N G  
June 1 – September 8, 2012

**ROBERT RAUSCHENBERG** - continued



SCENT 1974  
Offset lithograph transferred to collage of paper  
bags and fabric  
86 x 50" (218.4 x 127 cm)  
Edition of 30, #8  
RR74-692

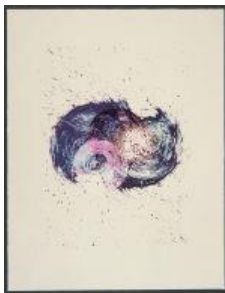


RINGER 1974  
Offset lithograph and screenprint transferred to a  
collage of paper bag and fabric  
70 x 36" (177.8 x 71.4 cm)  
Edition of 31, #28  
RR74-686



HORSEFEATHERS THIRTEEN - IV 1972  
Color lithograph/screen/pochoir/  
embossing with unique collage  
27 7/8 x 22 1/2" (70.8 x 57.1 cm)  
Edition of 89, #75  
RR72-473

**DOROTHEA ROCKBURNE**



W.I.M.P. #2 1999  
9-color lithograph/screenprint  
41 x 32" (104.1 x 81.3 cm)  
Edition of 39, #15  
DR98-1411





GEMINI G.E.L. <sup>AT</sup> JONI MOISANT WEYL

S U M M E R S A I L I N G  
June 1 – September 8, 2012

**DOROTHEA ROCKBURNE** - continued



URIEL 1983  
7-color lithograph on Transpagra, printed both sides, mounted on 100% ragboard, framed  
39 1/8 x 31 5/8" (99.4 x 80.3 cm)  
Edition of 34, #14  
DR81-1020



DEVINE RAY 1983  
9-color lithograph on Transpagra, printed both sides, mounted on 100% ragboard, framed  
40 x 35" (101.6 x 88.9 cm)  
Edition of 44, #10  
DR81-1019

**JAMES ROSENQUIST**



APPEARANCE 1982  
2-color aquatint/drypoint/etching  
33 1/2 x 26 1/2" (85.1 x 67.3 cm)  
Edition of 59, #36  
JR80-3043



"WHEN A LEAK...B&W" 1982  
7-color lithograph  
50 1/2 x 59" (128.3 x 149.9 cm)  
Edition of 25, #16  
JR80-969A



GEMINI G.E.L. <sup>AT</sup> JONI MOISANT WEYL

S U M M E R S A I L I N G  
June 1 – September 8, 2012

**SUSAN ROTHENBERG**



PUPPET SERIES #1 2008  
1-color mezzotint  
16 1/2 x 16" (41.9 x 40.6 cm)  
Edition of 50, #17  
SR08-3434



PUPPET SERIES #2 2008  
1-color mezzotint  
16 1/2 x 16" (41.9 x 40.6 cm)  
Edition of 50, #17  
SR08-3435



PUPPET SERIES #3 2008  
1-color mezzotint  
16 1/2 x 16" (41.9 x 40.6 cm)  
Edition of 50, #17  
SR08-3445



PUPPET SERIES #4 2008  
1-color mezzotint  
16 1/2 x 16" (41.9 x 40.6 cm)  
Edition of 50, #20  
SR08-3446



LEAN TO 2008  
1-color mezzotint  
16 1/2 x 16" (41.9 x 40.6 cm)  
Edition of 50, #17  
SR08-3447



TILT UP 2008  
1-color mezzotint  
16 1/2 x 16" (41.9 x 40.6 cm)  
Edition of 50, #17  
SR08-3448



GEMINI G.E.L. <sup>AT</sup> JONI MOISANT WEYL

S U M M E R S A I L I N G  
June 1 – September 8, 2012

**SUSAN ROTHENBERG** - continued



SPINNING (STATE) 2006  
1-color lithograph  
22 x 17 1/2" (55.9 x 44.5 cm)  
Edition of 24, #12  
SR86-1127A



SLIP 2003  
6-color lithograph  
37 1/4 x 42" (95.3 x 106.7 cm)  
Edition of 56, #24  
SR02-1494



SLIP (STATE) 2003  
3-color lithograph  
31 x 41 1/8" (78.7 x 104.5 cm)  
Edition of 17, #9  
SR02-1494A



GROUP 2003  
1-color lithograph  
35 1/2 x 28 1/2" (90.2 x 72.4 cm)  
Edition of 60, #24  
SR02-1495



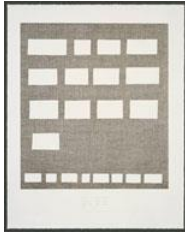
BONEMAN 1986  
1-color mezzotint  
30 x 20 13/16" (76.2 x 52.9 cm)  
Edition of 42, #3  
SR86-3131



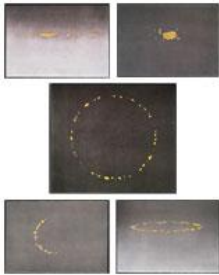
GEMINI G.E.L. <sup>AT</sup> JONI MOISANT WEYL

S U M M E R S A I L I N G  
June 1 – September 8, 2012

**ED RUSCHA**



LISTEN IF YOU EVER TELL... 2007  
3-color lithograph  
19 1/2 x 15 1/2" (49.5 x 39.4 cm)  
Edition of 35, #20  
ER06-1535

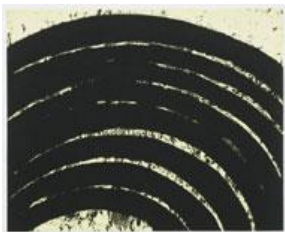


VARIOUS CHEESES 1976  
Complete set of 5 lithographs  
Dimensions vary Edition sizes vary, RTP  
ER75-732-736

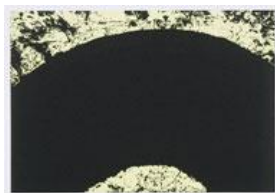
**RICHARD SERRA**



LEVEL I 2008  
1-color etching  
39" x 64 1/2" (99.1 x 163.8 cm)  
Edition of 38, #5  
RS08-3436



PATHS AND EDGES #5 2007  
1-color etching  
Signed and numbered on verso  
26 x 32 1/4" (66.0 x 81.9 cm)  
Edition of 60, #21  
RS07-3417



PATHS AND EDGES #10 2007  
1-color etching  
Signed and numbered on verso  
17 1/2 x 25" (44.5 x 63.5 cm)  
Edition of 60, #21  
RS07-3422



---

GEMINI G.E.L. <sup>AT</sup> JONI MOISANT WEYL

S U M M E R S A I L I N G  
June 1 – September 8, 2012

**RICHARD TUTTLE**



METAL SHOES, 1 2009  
Aquatint with copper plate embossment  
12 3/4 x 12 3/4" (32.4 x 32.4 cm)  
Series of 30 unique works  
RT09-3470 (#20)



METAL SHOES, 8 2009  
Aquatint  
19 3/4 x 29 3/4" (50.2 x 75.6 cm)  
Series of 30 unique works  
RT09-3477 (#20)