



GEMINI G.E.L. AT JONI MOISANT WEYL

A TRIBUTE TO ROBERT RAUSCHENBERG
PART ONE: PRINTS

October 23 – December 6, 2008



BOOSTER 1967
5-color lithograph/screenprint
72 x 35 1/2" Edition of 38
RR67-106

NFS
Private Collection



TEST STONE #7 1967
1-color lithograph
33 x 48" Edition of 38, #18
RR67-108

\$ 20,000



EARTH CRUST 1969
2-color lithograph
34 x 25" Edition of 42, #15
RR69-287

\$ 15,000



SUB-TOTAL 1972
3-color lithograph
8 x 12 1/2" Edition of 500, #324
RR69-304

\$ 4,000
frame: 400

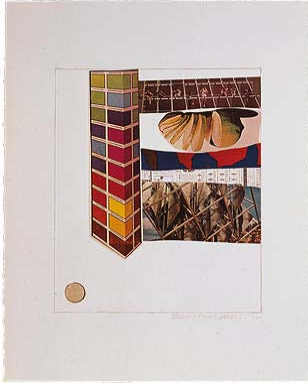


GEMINI G.E.L. AT JONI MOISANT WEYL

A TRIBUTE TO ROBERT RAUSCHENBERG

PART ONE: PRINTS

October 23 – December 6, 2008



HORSEFEATHERS THIRTEEN - IV 1972
Color lithograph/screen/pochoir/
collage/embossing
27 7/8 x 22 1/2" Edition of 89, #75
RR72-473

\$ 10,000
frame: 500



ROMANCES (POMEGRANATE) 1977
4-color lithograph
41 3/4 x 31 1/2" Edition of 37, #1
RR77-835

\$ 18,000



ROOKERY MOUNDS - GRAY GARDEN
1979
4-color lithograph
41 x 31" Edition of 55, #27
RR79-896

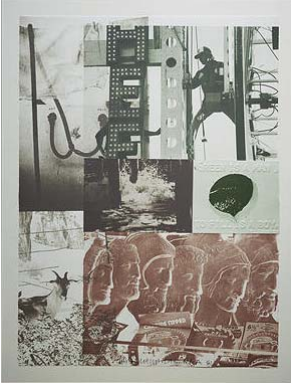
\$ 15,000
frame: 650



GEMINI G.E.L. AT JONI MOISANT WEYL

A TRIBUTE TO ROBERT RAUSCHENBERG
PART ONE: PRINTS

October 23 – December 6, 2008



AMERICAN PEWTER WITH BURROUGHS
II 1981
4-color lithograph/embossing
31 1/2 x 23 1/2" Edition of 42, AP VIII
RR81-1014

\$ 9,000
frame: 800



LILLY SCENT 1981
4-color lithograph
32 x 24" Edition of 50, #46
RR81-1036

\$ 9,000
frame: 800



FENCE 1991
4-color lithograph
44 1/2 x 30" Edition of 57, #23
RR91-1283

\$ 12,000
frame: 550



GEMINI G.E.L. ^{AT} JONI MOISANT WEYL

**A TRIBUTE TO ROBERT RAUSCHENBERG
PART ONE: PRINTS**

October 23 – December 6, 2008



WITNESS (SPECULATIONS) 1996
20-color screenprint
68 1/2 x 31 1/2" Edition of 55, #51
RR94-5215

\$ 25,000



L.A. UNCOVERED #11 1998
11-color screenprint
31 x 22 3/4" Edition of 56, #16
RR98-5257

\$ 10,000



VAMP 2000
18-color screenprint
23 1/2 x 31 1/2" Edition of 50, #27
RR99-5268

\$ 12,000
frame: 500