



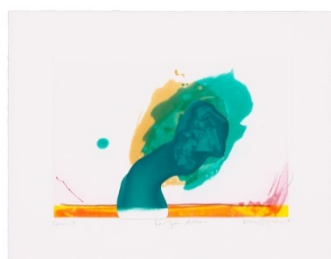
GEMINI G.E.L. AT JONI MOISANT WEYL

In the Project Space:

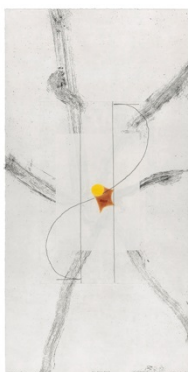
RICHARD TUTTLE



Nature-Media/V 2014
2-color etching
20 x 18" (50.8 x 45.7 cm)
Edition of 35, #17
RT13-3530



"For John Altoon" 2011
4-color etching with collage and unique pencil hand-drawing
by the artist
17 x 22" (43.2 x 55.9 cm)
Edition of 35, #22
RT11-3512



Blossom 2017
4-color etching with chine collé and red pen addition
by the artist
22 x 11" (55.9 x 27.9 cm)
Edition of 30, #14
RT15-3553



Yellow Circle 2018
Ceramic tile and vapor-coated polished steel
19 x 24 x 18" (48.3 x 61 x 45.7 cm)
Edition of 7, #6
RT17-2236



GEMINI G.E.L. ^{AT} JONI MOISANT WEYL

In the Project Space:

RICHARD TUTTLE



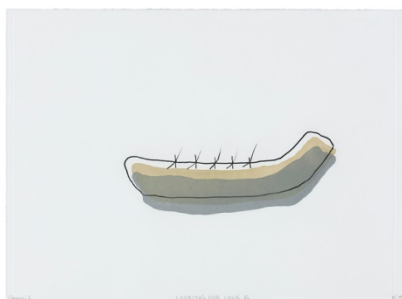
Tile, VI (nine inches), 2011
Durango low-fire clay with black slip, Nichrome wire and painted white wooden frame
13 5/8 x 13 3/4 x 3" (34.6 x 34.9 x 7.6 cm)
A series of 11 unique works, #6
RT11-2226



"For Case Hudson, Printer", 2013
Drypoint and woodblock with plastic and paper construction
17 7/8 x 24" (45.4 x 61.0 cm)
Series of 43 unique works, #17
RT12-227



"Pacific Seriously", 2012
6-color spit bite, aquatint, chine collé and paper pulp construction, each with unique hand-drawing by the artist
20 1/4 x 25 1/4 x 2" (51.4 x 64.1 x 5.08 cm), framed
Series of 38 unique works, #17
RT11-224



Looking for Love III, 2015
3-color aquatint
each 22 x 30 1/8" (55.9 x 76.5 cm)
Editions of 28, #13
RT14-3538