



GEMINI G.E.L. ^{AT} JONI MOISANT WEYL

SELECTED WORKS



TACITA DEAN

Pantone Pair (7726) 2019

Found Pantone card paired with postcard from the artist's collection, monoprinted and framed to the artist's specifications

12 1/2 x 15 x 1 1/2" (31.8 x 38.1 x 3.8 cm)

A series of 80 unique works

TD19-258

\$ 12,500 (each)
framed

On view: *Pantone Pair (Russet Orange)*, *Pantone Pair (7737)*, *Pantone Pair (4545)*, *Pantone Pair (Picante)*, *Pantone Pair (199)*, *Pantone Pair (Limeade)*, *Pantone Pair (691)*, *Pantone Pair (152)*, *Pantone Pair (Fir)*



FRANZ WEST

Honeymoon 2012

Cast papier-mache with wire mesh

Approximately 39" in diameter x 3/4" (99.1 x 1.91 cm)

Series of 30 unique works, #15

FW11-225

27,000



RICHARD TUTTLE

Looking for Love I 2015

3-color aquatint

22 x 30 1/8" (55.9 x 76.5 cm)

Edition of 28, #13

RT14-3536

2,800
frame 580



RICHARD TUTTLE

Looking for Love II 2015

4-color aquatint

22 x 30 1/8" (55.9 x 76.5 cm)

Edition of 28, #13

RT14-3537

2,800
frame 580



RICHARD TUTTLE

Looking for Love III 2015

3-color aquatint

22 x 30 1/8" (55.9 x 76.5 cm)

Edition of 28, #13

RT14-3538

2,800
frame 580



GEMINI G.E.L. ^{AT} JONI MOISANT WEYL

SELECTED WORKS



RICHARD TUTTLE

Looking for Love IV 2015
3-color aquatint
22 x 30 1/8" (55.9 x 76.5 cm)
Edition of 28, #13
RT14-3539

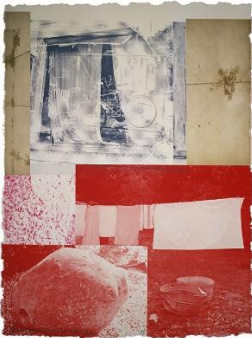
\$ 2,800
frame 580



ALLEN RUPPERSBERG

Great Speckled Bird 2013
Multi-colored screenprint on perforated player-piano roll
overall 11 1/4 x 240 1/2" (28.6 x 610.9 cm)
Edition of 12, #7
AR12-5365

22,000
frame 2,400



ROBERT RAUSCHENBERG

Rookery Mounds - Rose Bay 1979
4-color lithograph
41 x 31" (104.1 x 78.7 cm)
Edition of 54, AP 11
RR79-899

POR



ROBERT RAUSCHENBERG

Rookery Mounds - Crystal 1979
3-color lithograph
41 x 31" (104.1 x 78.7 cm)
Edition 55, #5
RR79-898

15,000
frame 1,000



ELIZABETH MURRAY

Messin' Around From "Sweetzer Suite" 2006
3-dimensional assemblage of hand-carved foam, hand-painted by the artist; series of unique works
aprox. 37 x 29" (94 x 73.7 cm)
A series of unique works
EM06-218

POR



GEMINI G.E.L. ^{AT} JONI MOISANT WEYL

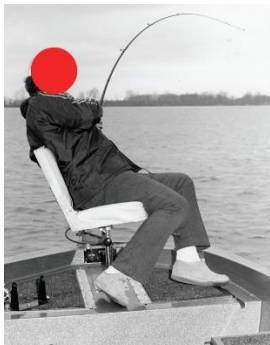
SELECTED WORKS



ELIZABETH MURRAY

Toe Two 1994
2-color screenprint
16 x 14 1/2" (40.6 x 36.8 cm)
Edition of 200, AP 34
EM94-5207

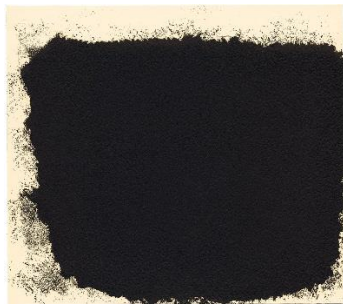
\$ 1,700
frame 450



JOHN BALDESSARI

Big Catch 2016
8-color screenprint
32 x 25 1/4" (81.3 x 64.1 cm)
Edition of 65, #45
JBA16-5394

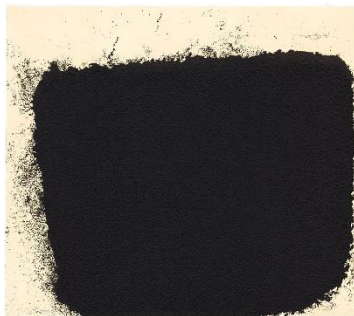
12,000
frame 650



RICHARD SERRA

Notebook Drawing II 2023
1-color etching, artist's approval screenprinted on verso
24 1/2 x 27 1/2" (62.2 x 69.9 cm)
Edition of 40, #25
RS22-3602

7,000
frame 550



RICHARD SERRA

Notebook Drawing III 2023
1-color etching, artist's approval screenprinted on verso
24 1/2 x 27 1/2" (62.2 x 69.9 cm)
Edition of 40, #25
RS22-3603

7,000
frame 550



RICHARD SERRA

Notebook Drawing VIII 2023
1-color etching, artist's approval screenprinted on verso
24 1/2 x 27 1/2" (62.2 x 69.9 cm)
Edition of 40, #25
RS22-3608

7,000
frame 550



GEMINI G.E.L. ^{AT} JONI MOISANT WEYL

SELECTED WORKS



JONATHAN BOROFSKY
Male / Female 2000
6-color lithograph/screenprint
25 1/4 x 18 1/2" (64.1 x 47 cm)
Edition of 35, #20
JB99-1421

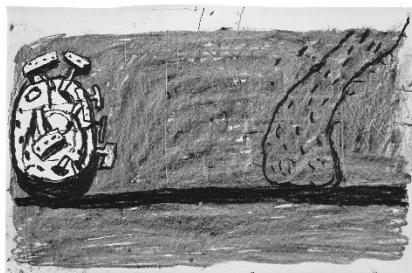
\$ 1,200
frame 300



ANN HAMILTON
Pages 2017
Unique cloth and word collage on book endpaper
Various dimensions
Framed 16 3/4 x 13 7/8" (42.5 x 35.2 cm)
A series of unique works
AH17-251

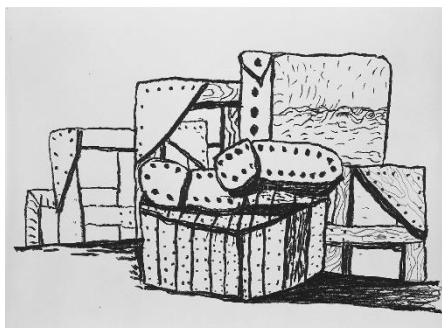
6,000 (each)
framed

Left to right:
Page 10, Page 56, Page 5
Page 20, Page 17, Page 6
Page 81, Page 18, Page 100



PHILIP GUSTON
Scene 1981
1-color lithograph
20 x 29 3/4" (50.8 x 75.6 cm)
Edition of 50, #40
PG79-930

6,000
frame 650



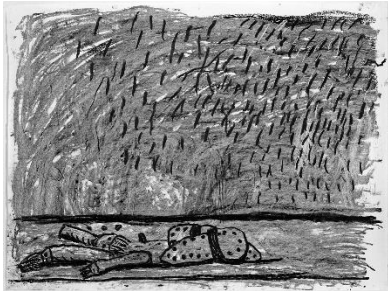
PHILIP GUSTON
Studio Forms 1980
1-color lithograph
32 x 42 1/2" (81.3 x 108 cm)
Edition of 100, #52
PG79-921

12,000
frame 1,200



GEMINI G.E.L. ^{AT} JONI MOISANT WEYL

SELECTED WORKS



PHILIP GUSTON

View 1983

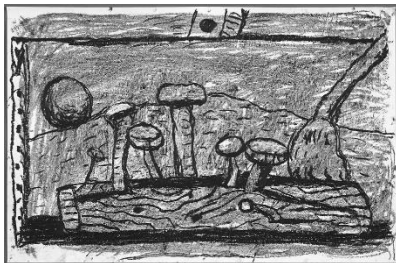
1-color lithograph, Estate Stamped

30 x 42 1/2" (76.2 x 108 cm)

Edition of 50, #30

PG79-923

\$ 9,000
frame 850



PHILIP GUSTON

Easel 1983

1-color lithograph, Estate Stamped

20 x 30" (50.8 x 76.2 cm)

Edition of 50, #31

PG79-934

6,000
frame 650



TERRY WINTERS

Clocks And Clouds/2 2013

6-color lithograph

36 x 46" (91.4 x 116.8 cm)

Edition of 35, #17

TW13-1623

6,000
frame 1,300



TERRY WINTERS

Clocks And Clouds/5 2013

6-color lithograph

36 x 46" (91.4 x 116.8 cm)

Edition of 35, #29

TW13-1625

6,000
frame 1,300



GEMINI G.E.L. ^{AT} JONI MOISANT WEYL

SELECTED WORKS



ANALIA SABAN

Wooden Floor On Wood (One-Point Perspective) 2017

Photoetching on wood

26 3/4 x 26 3/4 x 3/4" (67.9 x 67.9 x 1.9 cm)

Edition of 38

AS17-3560

\$ 4,200

framed



ANALIA SABAN

Wooden Floor On Wood (Horizontal) 2017

Photoetching on wood

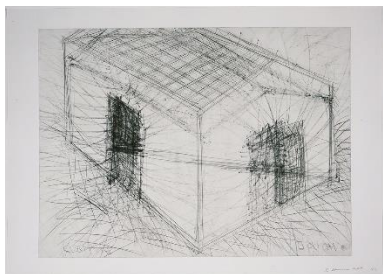
26 3/4 x 26 3/4 x 3/4" (67.9 x 67.9 x 1.9 cm)

Edition of 38

AS17-3559

4,200

framed



BRUCE NAUMAN

House Divided 1985

1-color drypoint/etching

28 x 39 1/8" (71.1 x 99.4 cm)

Edition of 23, #7

BN83-3086

15,000
frame 1,000



BRUCE NAUMAN

Floor Drain 1985

1-color drypoint/aquatint

39 1/8 x 28" (99.4 x 71.1 cm)

Edition of 32, #4

BN83-3085

10,000
frame 600