



GEMINI G.E.L. <sup>AT</sup> JONI MOISANT WEYL

SELECTED WORKS BY GEMINI ARTISTS  
February 3 – May 27, 2023



**Ellsworth Kelly**

*Sunflower I*, 2004  
1-color lithograph  
37 x 29" (94 x 73.7 cm)  
Edition of 50, AP 10  
EK95-1398



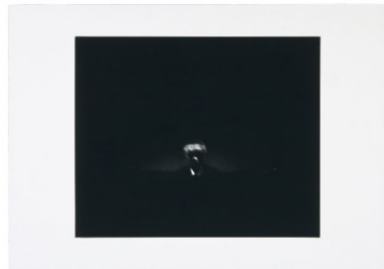
**Tacita Dean**

*Pantone Pair (Cool Gray 7)*, 2019  
Found Pantone card paired with postcard from the artist's collection, monoprinted and framed to the artist's specifications  
12 1/2 x 15 x 1 1/2" (31.8 x 38.1 x 3.8 cm)  
A series of 80 unique works  
TD19-258



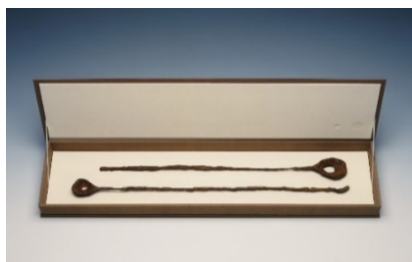
**Ann Hamilton**

*face...bobby*, 2003  
1-color photo-gravure, signed and numbered on verso  
29 1/2 x 42" (74.9 x 106.7 cm)  
Edition of 20, #11  
AH03-3350



**Ann Hamilton**

*face...mr. innui*, 2003  
1-color photo-gravure, signed and numbered on verso  
29 1/2 x 42" (74.9 x 106.7 cm)  
Edition of 20, #11  
AH03-3356



**Ann Hamilton**

*[#6] and [#7] from "reach"*, 2005  
One from a series of paired, cast-steel and rusted spoons  
28 x 2" (71.1 x 5.1 cm)  
Edition of 15, #10  
AH04-2209



GEMINI G.E.L. <sup>AT</sup> JONI MOISANT WEYL



**Susan Rothenberg**

*Spinning (State)*, 2006

1-color lithograph

22 x 17 1/2" (55.9 x 44.5 cm)

Edition of 24, #12

SR86-1127A



**Richard Serra**

*Composite II*, 2019

3-color aquatint with screenprinted Paintstik/etching ink

Signed-and-numbered on verso

20 x 29 1/4" (50.8 x 74.3 cm)

Edition of 38, #24

RS17-4038



**Claes Oldenburg**

*Soft Light Bulb - Night*, 1997

1-color lithograph with chine colle

31 3/4 x 24" (80.6 x 61 cm)

Edition of 35, #15

CO92-1341B



**Jasper Johns**

*Untitled*, 1998

1-color etching

30 x 22" (76.2 x 55.9 cm)

Edition of 75, SP9

JJ97-2182



**Richard Serra**

*Junction #1*, 2010

1-color etching

16 x 18" (40.6 x 45.7 cm)

Edition of 50, #40

RS10-3485



**Analia Saban**

*Pitcher #4 (Spilled Interior)*, 2017

Stenciled ink monoprint

22 x 30" (55.9 x 76.2 cm)

Edition of 34, #24

AS17-249



GEMINI G.E.L. <sup>AT</sup> JONI MOISANT WEYL



**Susan Rothenberg**

*Puppet Series #2, 2008*

1-color mezzotint

16 1/2 x 16" (41.9 x 40.6 cm)

Edition of 50, #17

SR08-3435



**Robert Rauschenberg**

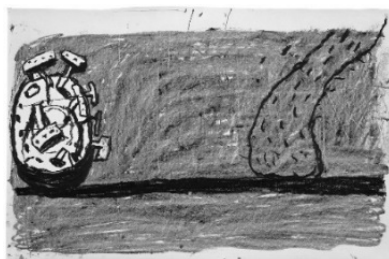
*Test Stone #1, 1967*

1-color lithograph

18 x 14" (45.7 x 35.6 cm)

Edition of 77, #66

RR67-101



**Philip Guston**

*Scene, 1981*

1-color lithograph

20 x 29 3/4" (50.8 x 75.6 cm)

Edition of 50, #40

PG79-930



**John Baldessari**

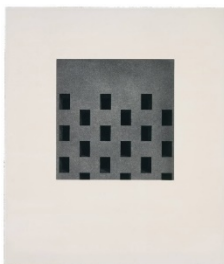
*Hands & Feet: Hands, Gloves & Person, 2017*

8-color screenprint

26 1/4 x 36" (66.7 x 91.4 cm)

Edition of 50, #21

JBA16-5400



**Toba Khedoori**

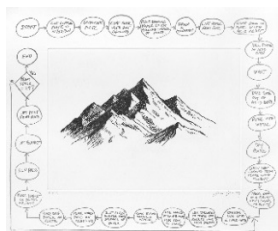
*Untitled, 2005*

1-color etching

27 3/8 x 23 5/8" (69.5 x 60 cm)

Edition of 50, #20

TK05-3406



**Analia Saban**

*Flowchart (Mountain), 2020*

2-color etching

16 5/8 x 19 7/8" (42.2 x 50.5 cm)

Edition of 25, #23

AS19-3591



GEMINI G.E.L. <sup>AT</sup> JONI MOISANT WEYL



**Analia Saban**

*Blender (One-Continuous Line)*, 2016

1-color aquatint

54 1/2 x 41 1/2" (138.4 x 105.4 cm)

Edition of 18, #15

AS15-3541



**Jonathan Borofsky**

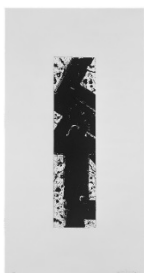
*God Is A Feeling*, 2010

2-color lithograph

38 x 49" (96.5 x 124.5 cm)

Edition of 25, #18

JB08-1583



**Sam Francis**

*Totem*, 1983

1-color aquatint

37 3/4 x 19 3/4" (95.9 x 50.2 cm)

Edition of 29, AP 6

SF81-3053



**Brice Marden**

*Greyer Muses*, 2001

2-color etching/1-color lithograph

22 x 30" (55.9 x 76.2 cm)

Edition of 45, #2

BM99-1433



**Brice Marden**

*Red Line Muses*, 2001

2-color etching/1-color lithograph

22 x 30" (55.9 x 76.2 cm)

Edition of 45, #8

BM99-1432



**Ken Price**

*Western Sunset*, 1993

7-color screenprint

26 x 20 3/8" (66 x 51.8 cm)

Edition of 70, #63

KP92-5199



GEMINI G.E.L. <sup>AT</sup> JONI MOISANT WEYL



**Bruce Nauman**  
*Soft Ground Etching - Green, 2007*  
2-color etching  
29 x 34 1/4" (73.7 x 87 cm)  
Edition of 50, #8  
BN06-3410



**Bruce Nauman**  
*Soft Ground Etching - Rose, 2007*  
2-color etching  
29 3/4 x 34" (75.6 x 86.4 cm)  
Edition of 50, #8  
BN06-3412



**Bruce Nauman**  
*Soft Ground Etching - Lavender, 2007*  
2-color etching  
30 x 34" (76.2 x 86.4 cm)  
Edition of 50, #9  
BN06-3407



**Bruce Nauman**  
*Soft Ground Etching - Coral, 2007*  
2-color etching  
29 3/4 x 34" (75.6 x 86.4 cm)  
Edition of 50, #9  
BN06-3411



**Bruce Nauman**  
*Soft Ground Etching - Yellow, 2007*  
2-color etching  
30 3/4 x 34" (78.1 x 86.4 cm)  
Edition of 50, #8  
BN06-3408





GEMINI G.E.L. <sup>AT</sup> JONI MOISANT WEYL



**Elizabeth Murray**

*"Wooster" from The Metropolitan Series, 2005*

Paper construction: collage & handcoloring by the artist over multi-colored lithograph. Mounted onto ragboard.

28 x 35 x 1 5/8" (71.1 x 88.9 x 4.1 cm)

One from a series of 24 unique works

EM04-216



**Elizabeth Murray**

*"St. Marks" from The Metropolitan Series, 2005*

Paper construction: collage & handcoloring by the artist over multi-colored lithograph. Mounted onto ragboard.

28 x 35 x 1 5/8" (71.1 x 88.9 x 4.1 cm)

One from a series of 24 unique works

EM04-216



**John Baldessari**

*Noses & Ears, Etc.: Two Profiles, One With Nose (B&W); One With Ear (B&W), 2006*

2-layer, 7-color screenprint construction, mounted to Sintra and hand cut

framed 34 3/4 x 62 1/2 x 3" (88.3 x 158.8 x 7.6 cm)

Edition of 45, #7

JBA06-5307



**John Baldessari**

*Noses & Ears, Etc.: One Face (Three Versions) With Nose, Ear And Glasses, 2006*

3-layer, 26-color screenprint construction, mounted to Sintra and hand cut

framed 34 3/4 x 76 3/4 x 3" (88.3 x 194.9 x 7.6 cm)

Edition of 45, AP10

JBA06-5311



**Elizabeth Murray**

*Fling, 1997*

8-color lithograph/ 8-color screenprint

36 x 27" (91.4 x 68.6 cm)

Edition of 40, #36

EM93-1345



GEMINI G.E.L. <sup>AT</sup> JONI MOISANT WEYL



**Richard Tuttle**

*Tile, IV (seven inches), 2011*

Durango earthenware clay with black slip, copper wire and painted white wooden frame

8 5/8 x 8 5/8 x 2 1/4" (21.9 x 21.9 x 5.7 cm)

Edition of 17, #6

RT11-2224



**Richard Tuttle**

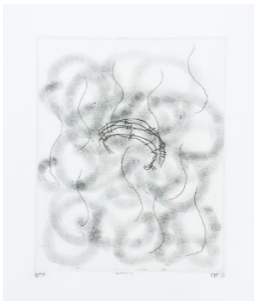
*Tile, III (six inches), 2011*

Durango earthenware clay with black slip, silicone and painted white wooden frame

7 5/8 x 7 5/8 x 2 3/4" (19.4 x 19.4 x 7 cm)

Edition of 21, #6

RT11-2223



**Richard Tuttle**

*Nature-Media/II, 2014*

1-color etching (2 printings)

13 x 11" (33 x 27.9 cm)

Edition of 35, #16

RT13-3527



**Richard Tuttle**

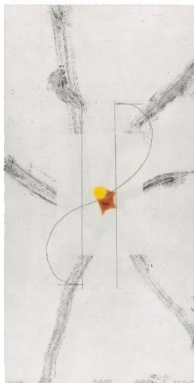
*Nature-Media/IV, 2014*

2-color etching (2 printings)

20 x 18" (50.8 x 45.7 cm)

Edition of 35, #17

RT13-3529



**Richard Tuttle**

*Blossom, 2017*

4-color etching with chine colle and red pen addition by the artist

22 x 11" (55.9 x 27.9 cm)

Edition of 30, #14

RT15-3553



GEMINI G.E.L. <sup>AT</sup> JONI MOISANT WEYL



**Richard Tuttle**

*"Pacific Seriously", 2012*

6-color spit bite, aquatint, chine colle and paper pulp construction, each with unique hand-drawing by the artist  
framed 20 1/4 x 25 1/4 x 3" (51.4 x 64.1 x 7.6 cm)  
Series of 38 unique works, #17

RT11-224



**Richard Tuttle**

*"For Case Hudson, Printer", 2013*

Drypoint, woodblock with plastic and paper construction  
17 7/8 x 24" (45.4 x 61 cm)  
Edition of 43, #17

RT12-227



**Richard Tuttle**

*Looking For Love I, 2015*

3-color aquatint  
22 x 30 1/8" (55.9 x 76.5 cm)  
Edition of 28, #13

RT14-3536



**Richard Tuttle**

*Looking For Love II, 2015*

4-color aquatint  
22 x 30 1/8" (55.9 x 76.5 cm)  
Edition of 28, #13

RT14-3537