



GEMINI G.E.L. <sup>AT</sup> JONI MOISANT WEYL

## SUMMER IN THE CITY



**Dorothea Rockburne**

*Devine Ray* 1983

9-color lithograph on Transpagra, printed both sides, mounted on 100% ragboard

40 x 35" (101.6 x 88.9 cm)

Edition of 44, AP 7

DR81-1019

\$ 13,500  
framed



**Brice Marden**

*Greyer Muses* 2001

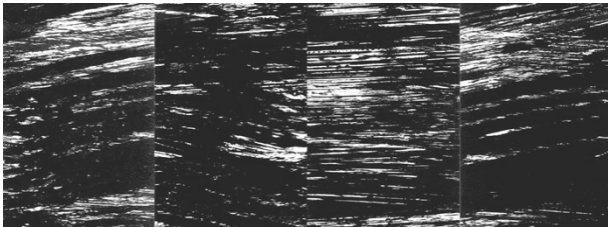
2-color etching/1-color lithograph

22 x 30" (55.9 x 76.2 cm)

Edition of 45, #2

BM99-1433

30,000  
framed



**Ellsworth Kelly**

*The River* 2003

12-color lithograph, coated, mounted on aluminum

40 x 109" (101.6 x 276.9 cm)

Edition of 12

EK02-1486

POR



**John Chamberlain**

*Straits of Muse* 2005

Chrome-plated bronze, cast from foam carving

16 x 14 x 13" (40.6 x 35.6 x 33 cm)

Edition of 9, #3

JC04-2211

60,000



GEMINI G.E.L. <sup>AT</sup> JONI MOISANT WEYL



**Terry Winters**  
*Clocks and Clouds /2* 2013  
6-color lithograph  
36 x 46" (91.4 x 116.8 cm)  
Edition of 35, #17  
TW12-1623

\$ 6,000  
frame 1,300



**Terry Winters**  
*Clocks and Clouds /5* 2013  
6-color lithograph  
36 x 46" (91.4 x 116.8 cm)  
Edition of 35, #29  
TW13-1625

6,000  
frame 1,300



**Toba Khedoori**  
*Untitled* 2025  
1-color mezzotint  
57 1/4 x 43 3/4" (145.4 x 111.1 cm)  
Edition of 42, #8  
TK24-3617

45,000  
frame 2,900



**Vija Celmins**  
*Alliance* 1983  
3-color aquatint/mezzotint/drypoint  
24 x 19 3/8" (61 x 49.2 cm)  
Edition of 48, #7  
VC82-3076

35,000  
framed

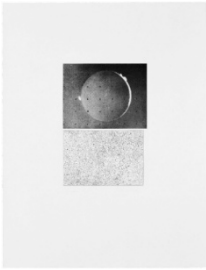


**Vija Celmins**  
*Drypoint - Ocean Surface* 1983  
1-color drypoint  
26 1/8 x 20 1/8" (66.4 x 51.1 cm)  
Edition of 75, #7  
VC82-3073

40,000  
framed



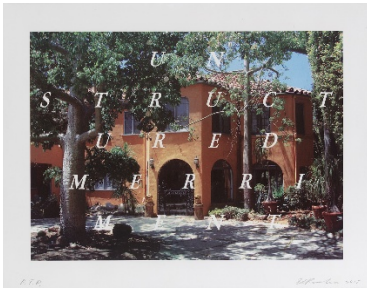
GEMINI G.E.L. <sup>AT</sup> JONI MOISANT WEYL



**Vija Celmins**

*Jupiter Moon - Constellation* 1983  
3-color mezzotint/etching  
23 3/4 x 18 1/2" (60.3 x 47 cm)  
Edition of 48, #7  
VC82-3077

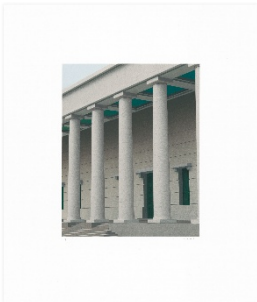
\$ 25,000  
framed



**Ed Ruscha**

*Unstructured Merriment* 2016  
22-color lithograph/screenprint  
23 1/4 x 30" (59.1 x 76.2 cm)  
Edition of 60, #39  
ER15-1636

15,000  
frame 500



**Thomas Demand**

*Haus der Kunst* 2024  
9-color lithograph with embossing  
32 3/4 x 28" (83.2 x 71.1 cm)  
Edition of 48, #31  
ThD22-1689

8,000  
frame 950



**Thomas Demand**

*One Stamford Forum* 2024  
9-color lithograph with embossing  
32 3/4 x 28" (83.2 x 71.1 cm)  
Edition of 48, #31  
ThD19-1684

8,000  
frame 950



**Thomas Demand**

*Mumbai Olympic Pool* 2024  
8-color lithograph with embossing  
32 3/4 x 28" (83.2 x 71.1 cm)  
Edition of 48, #31  
ThD20-1687

8,000  
frame 950



GEMINI G.E.L. <sup>AT</sup> JONI MOISANT WEYL



**Ann Hamilton**

*RIGHTS 2017*

Blind embossment with hand-applied ink

79 1/2 x 21 1/2" (201.9 x 54.6 cm)

Edition of 22, AP 8

AH15-3555

\$ 20,000  
framed



**Claes Oldenburg**

*Profile Airflow - Test Mold, Front End 1972*

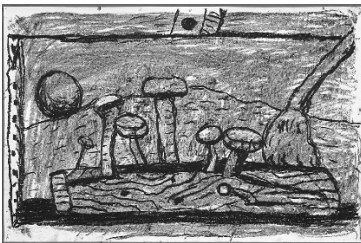
Molded polyurethane relief over 1-color silkscreen  
on plexiglas, framed in welded aluminum

18 1/2 x 15 5/8 x 4" (47 x 39.7 x 10.2 cm)

Edition of 50, #24

CO72-2009

25,000  
framed



**Philip Guston**

*Easel 1983*

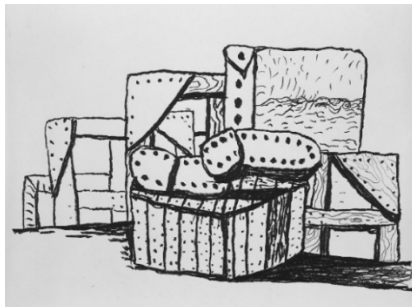
1-color lithograph, Estate Stamped

20 x 30" (50.8 x 76.2 cm)

Edition of 50, #31

PG79-934

10,000  
frame 650



**Philip Guston**

*Studio Forms 1980*

1-color lithograph

32 x 42 1/2" (81.3 x 108 cm)

Edition of 100, #52

PG79-921

20,000  
frame 1,200



GEMINI G.E.L. AT JONI MOISANT WEYL



**John Baldessari** \$ 30,000  
*Person With Guitar (Yellow)* 2004  
3-layer, 6-color screenprint construction, mounted to  
Sintra and hand cut  
24 x 46 1/2 x 3/4" (61 x 118.1 x 1.9 cm)  
Edition of 45  
JBA04-5294



**John Baldessari** 30,000  
*Person With Guitar (Green)* 2004  
3-layer, 8-color screenprint construction, mounted to  
Sintra and hand cut  
43 x 26 x 3/4" (109.2 x 66 x 1.9 cm)  
Edition of 45  
JBA04-5299



**John Baldessari** 30,000  
*Person With Guitar (Pink)* 2004  
3-layer, 5-color screenprint construction, mounted to  
Sintra and hand cut  
30 x 37 1/4 x 3/4" (76.2 x 94.6 x 1.9 cm)  
Edition of 45  
JBA04-5297



**Franz West** 27,000  
*Honeymoon* 2012  
Papier-mache, with wire mesh  
approx. diameter 39 x 3/4" (99.1 x 1.9 cm)  
Edition of 30, #15  
FW11-225



**Jonathan Borofsky** 1,200  
*Male / Female* 2000  
6-color lithograph/screenprint  
25 1/4 x 18 1/2" (64.1 x 47 cm)  
Edition of 35, #19  
JB99-1420  
frame 300



GEMINI G.E.L. <sup>AT</sup> JONI MOISANT WEYL



**Jonathan Borofsky**  
*Male / Female* 2000  
6-color lithograph/screenprint  
25 1/4 x 18 1/2" (64.1 x 47 cm)  
Edition of 35, #20  
JB99-1421

\$ 1,200  
frame 300



**Jonathan Borofsky**  
*Male / Female* 2000  
16-color screenprint  
25 1/4 x 18 1/2" (64.1 x 47 cm)  
Edition of 45, #15  
JB99-5258

1,200  
frame 300



**Jonathan Borofsky**  
*Male / Female* 2000  
6-color lithograph/screenprint  
25 1/4 x 18 1/2" (64.1 x 47 cm)  
Edition of 35, AP5  
JB99-1422

1,200  
frame 300



**Richard Serra**  
*Finally Finished IV* 2018  
1-color etching  
74 1/2 x 60" (189.2 x 152.4 cm)  
Edition of 44, #19  
RS17-3564

POR



**Richard Serra**  
*Screech* 1996  
1-color etching  
38 3/4 x 41" (98.4 x 104.1 cm)  
Edition of 29, AP3  
RS93-3219

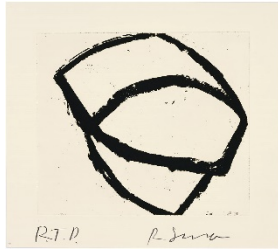
28,000  
frame 1,500



GEMINI G.E.L. AT JONI MOISANT WEYL



Venice Notebook #13



Venice Notebook #4

**Richard Serra**

*Venice Notebook 2001 2002*

1-color etchings

16 x 18" (40.6 x 45.7 cm) (each)

Editions of 60, AP3

RS01-3313-3341

\$ 10,000 each  
frames 575 each



Venice Notebook #8



Venice Notebook #18



Venice Notebook #17



Venice Notebook #12



**Richard Serra**

*Videy Afangar #8 1991*

1-color etching

12 3/4 x 14 1/4" (32.4 x 36.2 cm)

Edition of 75, AP 3

RS90-3164

8,500  
frame 500



**Richard Tuttle**

*Plant Growth 2012*

Ceramic earthenware

12 1/2 x 16 x 16" (31.8 x 40.6 x 40.6 cm)

Edition of 12, #6

RT12-228

10,000

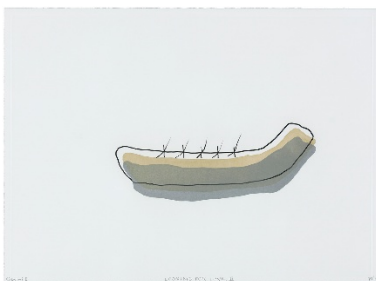


GEMINI G.E.L. AT JONI MOISANT WEYL



**Richard Tuttle**  
*Looking For Love II* 2015  
4-color aquatint  
22 x 30 1/8" (55.9 x 76.5 cm)  
Edition of 28, #13  
RT14-3537

\$ 2,800  
frame 580



**Richard Tuttle**  
*Looking For Love III* 2015  
3-color aquatint  
22 x 30 1/8" (55.9 x 76.5 cm)  
Edition of 28, #13  
RT14-3538

2,800  
frame 580