



GEMINI G.E.L. ^{AT} JONI MOISANT WEYL

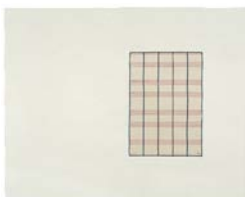
SUMMER SELECTIONS
JULY 7 – SEPTEMBER 2, 2016



JOHN BALDESSARI
NOSES & EARS, ETC.: FACE WITH NOSE AND
(GREEN) EAR 2006
3-layer, 6-color screenprint construction
34 3/4 x 62 3/4 x 3"
(88.3 x 159.4 x 7.6 cm)
Edition of 45, #9
JBA06-5309



JONATHAN BOROFSKY
HUMAN STRUCTURES #1 2005
42-color screenprint
60 x 51" (152.4 x 129.5 cm)
Edition of 35, #9
JB05-5303



ANN HAMILTON
script i 2008
2-color lithograph with chine collé
15 x 19" (38.1 x 48.3 cm)
Edition of 35, #16
AH07-1568



ANN HAMILTON
shell 2007
Felt multiple with cotton stitching and
black wire hanger
52 x 44 x 6" (132.1 x 111.8 x 15.2 cm)
Edition of 25, #7
AH07-2218



GEMINI G.E.L. ^{AT} JONI MOISANT WEYL

SUMMER SELECTIONS

JULY 7 – SEPTEMBER 2, 2016



DAVID HOCKNEY

MO McDERMOTT 1976

1-color lithograph

32 1/2 x 23 3/4" (82.6 x 60.3 cm)

Edition of 100, #80

DH76-774



ELLSWORTH KELLY

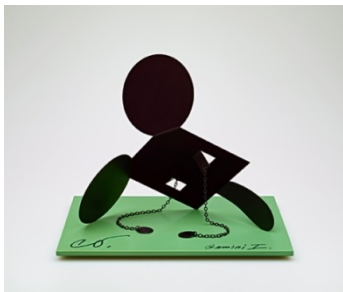
ORANGE 2004

1-color lithograph

16 x 12" (40.6 x 30.5 cm)

Edition of 250, AP 34

EK04-1507



CLAES OLDENBURG

GEOMETRIC MOUSE, SCALE E, "DESKTOP" 2013

Painted aluminum sculpture on painted
aluminum, signed-and-numbered base

6 1/2" x 8 1/4" x 6 1/2" (16.5 x 21.0 x 16.5 cm)

Edition of 50, #48

CO13-2234



KEN PRICE

THE FIREWORM CUP 1991

Earthenware with hand-painted glaze

in wooden display box

3 7/8 x 6 1/4 x 3 1/4" (9.8 x 15.9 x 8.3 cm)

box 8 x 10 3/8 x 5 3/4" (20.3 x 26.4 x 14.6 cm)

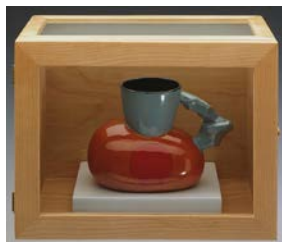
Edition of 25, #3

KP91-2177



GEMINI G.E.L. ^{AT} JONI MOISANT WEYL

SUMMER SELECTIONS
JULY 7 – SEPTEMBER 2, 2016



KEN PRICE

CHET 1991

Earthenware with hand-painted glaze
in wooden display box

4 1/8 x 6 x 3 1/8" (10.5 x 15.2 x 7.9 cm)

box 8 x 10 3/8 x 5 3/4" (20.3 x 26.4 x 14.6 cm)

Edition of 25, #25

KP91-2178



KEN PRICE

CALIFORNIA CUP 1991

Earthenware with hand-painted glaze
in wooden display box

4 1/8 x 6 x 3" (10.5 x 15.2 x 7.6 cm)

box 8 x 10 3/8 x 5 3/4" (20.3 x 26.4 x 14.6 cm)

Edition of 25, #20

KP91-2176



KEN PRICE

TEXAS TURTLE CUP 1971

16-color screenprint

41 x 32 1/2" (104.1 x 82.6 cm)

Edition of 75, #38

KP71-5005



GEMINI G.E.L. ^{AT} JONI MOISANT WEYL

SUMMER SELECTIONS

JULY 7 – SEPTEMBER 2, 2016



JOEL SHAPIRO

BOAT, BIRD, MOTHER AND CHILD (f) 2009

3-color (4 printings) screenprint

30 x 23 1/2" (76.2 x 59.7 cm)

Edition of 38, #11

JS09-5324



JOEL SHAPIRO

BOAT, BIRD, MOTHER AND CHILD (g) 2009

3-color (8 printings) screenprint

29 x 33 1/2" (73.7 x 85.1 cm)

Edition of 38, #20

JS09-5325



JOEL SHAPIRO

BOAT, BIRD, MOTHER AND CHILD (a) 2009

2-color (5 printings) screenprint

33 x 26" (83.8 x 66 cm)

Edition of 38, #20

JS09-5319



RICHARD TUTTLE

TILE II (five inches) 2011

Durango earthenware clay with black slip and
painted white wooden frame

7 5/8 x 7 5/8 x 2" (19.4 x 19.4 x 5.1 cm)

Series of 20 unique works, #6

RT11-2222



GEMINI G.E.L. ^{AT} JONI MOISANT WEYL

SUMMER SELECTIONS
JULY 7 – SEPTEMBER 2, 2016



RICHARD TUTTLE

TILE IV (seven inches) 2011
Durango earthenware clay with black slip,
copper wire and painted white wooden frame
8 5/8 x 8 5/8 x 2 1/4" (21.9 x 21.9 x 5.7 cm)
Series of 17 unique works, #6
RT11-2224



RICHARD TUTTLE

TILE VI (nine inches) 2011
Durango low-fire clay with black slip,
Nichrome wire and painted white wooden frame
13 5/8 x 13 3/4 x 3" (34.6 x 34.9 x 7.6 cm)
Series of 11 unique works, #6
RT11-2226



TERRY WINTERS

CLOCKS AND CLOUDS/1 2013
4-color lithograph
36 x 46" (91.4 x 116.8 cm)
Edition of 35, #17
TW13-1626



GEMINI G.E.L. ^{AT} JONI MOISANT WEYL

SUMMER SELECTIONS
JULY 7 – SEPTEMBER 2, 2016

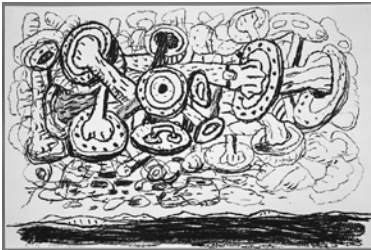
On View in the Project Space:



RICHARD DIEBENKORN
UNTITLED #3 1993
6-color lithograph, Estate Stamped
11 x 15 1/8" (27.9 x 38.4 cm)
Edition of 68, #57
RIDI92-1331



RICHARD SERRA
ELEVATIONAL WEIGHT IV 2016
Hand-applied Paintstik and silica on coated paper,
signed on verso
24 x 30" (61 x 76.2 cm)
Edition of 28, #16
RS14-4015



PHILIP GUSTON
SKY 1983
1-color lithograph
20 x 29 3/4" (50.8 x 75.6 cm)
Edition of 50, AP10
PG79-928



DAVID HOCKNEY
INK IN THE ROOM 1993
23-color lithograph/screen print
25 1/2 x 35 1/2" (64.8 x 90.2 cm)
Edition of 68, RTP
DH93-1362



GEMINI G.E.L. ^{AT} JONI MOISANT WEYL

SUMMER SELECTIONS
JULY 7 – SEPTEMBER 2, 2016



ELIZABETH MURRAY

"RED, HOT & BLUE" FROM ROOFTOPS WITH FLYING GEESE
2003

Multi-colored lithograph/screenprint, cut, collaged &
handpainted by the artist
aprox. 30 x 30" (76.2 x 76.2 cm)
Series of 13 unique works, #1
EM03-215



FRANK STELLA

EMPRESS OF INDIA II 1968

5-color lithograph
16 1/4" x 35 3/8" (41.3 x 89.9 cm)
Edition of 100, AP IX
FS67-158



JOHN BALDESSARI

GOD NOSE 2007

Hand-painted cast aluminum
36 x 37 x 6" (91.4 x 94.0 x 15.2 cm)
Edition of 25, #21
JBA07-2219