



GEMINI G.E.L. ^{AT} JONI MOISANT WEYL

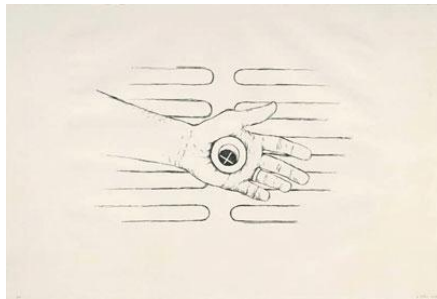
THE PAULA COOPER EFFECT

March 5 – May 22, 2026



Robert Gober
Untitled, 2002
4-color lithograph
51 x 36" (129.5 x 91.4 cm)
Edition of 65, #21
ROGO01-1485

\$ 22,000
frame 800



Robert Gober
Untitled, 2000
1-color lithograph
30 x 44 1/4" (76.2 x 112.4 cm)
Edition of 50, #7
ROGO99-1436

16,000
frame 650



Sophie Calle
The Address Book 2009
Portfolio of 28 prints in screenprinted binder,
with 3 related prints
15 1/4 x 12 5/8" (38.7 x 32.1 cm)
Edition of 45
SC09-2220

12,000



Elizabeth Murray
Ade from "Thirty-Eight", 1993
23-color lithograph/screenprint construction with
unique pastel application by the artist
35 1/2 x 29 1/2 x 3 3/4" (90.2 x 74.9 x 9.5 cm)
Series of 38 unique works (#6)
EM93-179

40,000
framed

GEMINI G.E.L. ^{AT} JONI MOISANT WEYL



Elizabeth Murray
Fling, 1997
 8-color lithograph/ 8-color screenprint
 36 x 27" (91.4 x 68.6 cm)
 Edition of 40, #36
 EM93-1345

\$ 4,500
frame 750



Elizabeth Murray
Whazzat, 1996
 Pastel over collaged lithograph
 Framed: 45 x 27 1/4" (114.3 x 69.2 cm)
 Series of 23 unique works (#9)
 EM96-210

30,000
framed



Elizabeth Murray
It Had To Be You from 'Knotting.' 1999
 Hand-colored paper construction, mounted
 onto 25 x 18 1/2" 4-ply museum board
 Framed: 26 x 19 1/2 x 4" (66 x 49.5 x 10.2 cm)
 Series of 33 unique works (#41)
 EM99-2186

12,000
framed



Elizabeth Murray
Night And Day, 1995
 8-color lithograph/silkscreen/intaglio
 sheet 16 3/4 x 15 3/8" (42.5 x 39.1 cm)
 image 8 1/4 x 7 5/16" (21 x 18.6 cm)
 Edition of 66, #33
 EM94-1370

3,000
frame 450



Elizabeth Murray
Red Violet, 1995
 9-color lithograph/silkscreen/intaglio
 sheet 16 3/4 x 15 3/8" (42.5 x 39.1 cm)
 image 8 1/4 x 7 5/16" (21 x 18.6 cm)
 Edition of 59, #49
 EM94-1368

3,000
frame 450



GEMINI G.E.L. ^{AT} JONI MOISANT WEYL



Sophie Calle

\$ 38,000

In Memory of Frank Gehry's Flowers, 2014

Painted wood shelf with color photographs,
glass vase by Frank Gehry, framed color photo
1 3/4 x 54 1/2 x 9 1/2" (4.4 x 138.4 x 24.1 cm)

Edition of 25, #18

SC11-2235



Jonathan Borofsky

4,000

Beyond Good And Bad, It's Amazing To Be Alive, 1991

frame 1,000

4-color lithograph/1-color screenprint

33 1/2 x 71" (85.1 x 180.3 cm)

Edition of 60, #56

JB90-1238



Jonathan Borofsky

1,200

Male / Female 2000

frame 300

16-color screenprint

25 1/4 x 18 1/2" (64.1 x 47 cm)

Edition of 45, #15

JB99-5258



Cecily Brown

4,500

Untitled, 2005

frame 600

10-color lithograph

40 x 29 1/2" (101.6 x 74.9 cm)

Edition of 35, #8

CBR05-1530



Cecily Brown

2,800

Aujourd'hui Rose, 2005

frame 800

4-color lithograph

39 x 29 1/2" (99.1 x 74.9 cm)

Edition of 75, #52

CBR05-1528

GEMINI G.E.L. AT JONI MOISANT WEYL



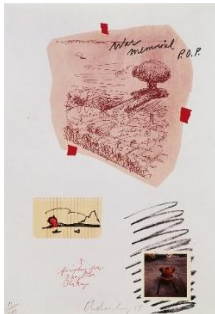
Jonathan Borofsky
Berlin Dream With Steel Window Frame, 1986
 2-color lithograph with plexiglas and metal frame
 33 1/2 x 41 1/4" (85.1 x 104.8 cm)
 Edition of 30, AP 4
 JB84-1123

\$ 9,500
framed



Claes Oldenburg
Perfume Atomizer, On A Pillow, 1997
 8-color lithograph with embossing
 22 1/2 x 28" (57.2 x 71.1 cm)
 Edition of 36, #32
 CO92-1338

4,500
Frame 900



Claes Oldenburg
Notes (P.O.P.), 1968
 13-color lithograph/embossing
 22 11/16 x 15 3/4" (57.6 x 40 cm)
 Edition of 100, #5
 CO68-181

POR



Claes Oldenburg
Notes (Body Buildings), 1968
 9-color lithograph
 22 11/16 x 15 3/4" (57.6 x 40 cm)
 Edition of 100, #79
 CO68-187

POR



Claes Oldenburg
Notes (Drum Set), 1968
 9-color lithograph
 22 11/16 x 15 3/4" (57.6 x 40 cm)
 Edition of 100, #79
 CO68-183

POR



GEMINI G.E.L. ^{AT} JONI MOISANT WEYL



Mark Di Suvero

\$ 15,000

Untitled, 1972

Arrangeable sculpture: 5 pieces of torch-cut 2" steel
closed 10 x 8 x 2" (25.4 x 20.3 x 5.1 cm)

Edition of 250, #134

MDS72-2035



Mark Di Suvero

20,000

T'ang, 1977

Torch-cut steel, 5 pieces to be arranged & positioned
closed 14 7/8 x 12 7/8 x 5/8" (37.8 x 32.7 x 1.6 cm)

Edition of 50, PC 3

MDS77-2041



Mark Di Suvero

20,000

Rising (For Walt Whitman), 1981

Saw-cut shot-peened nickel-plated aluminum,
5 pieces, to be arranged and positioned
closed 21 x 17 1/2 x 5/8" (53.3 x 44.5 x 1.6 cm)

Edition of 25, AC 10

MdS80-2056B



Joel Shapiro

9,500

Boat, Bird, Mother And Child (f), 2009

3-color (4 printings) screenprint

30 x 23 1/2" (76.2 x 59.7 cm)

Edition of 38, #5

JS09-5324

framed



Joel Shapiro

15,000

Up Down Around (d), 2011

12-color screenprint/lithograph

38 x 51" (96.5 x 129.5 cm)

Edition of 45, PP II

JS11-5346

framed

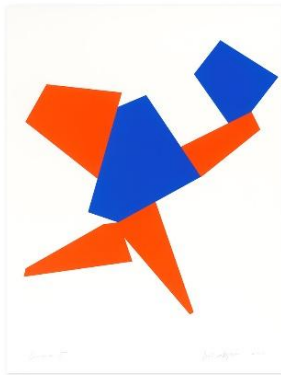


GEMINI G.E.L. ^{AT} JONI MOISANT WEYL



Joel Shapiro
Up Down Around (e), 2011
9-color screenprint/lithograph
38 x 41" (96.5 x 104.1 cm)
Edition of 45, #32
JS11-5347

\$ 4,500
frame 1,400



Joel Shapiro
Toss-Up, 2012
3-color screenprint
39 1/2 x 30" (100.3 x 76.2 cm)
Edition of 100, AP 14
JS12-5349

POR



Jonathan Borofsky
*Flying Man With Briefcase No. 28169***, 1983
Painted Gatorfoam multiple sculpture
94 1/2 x 24 1/2 x 1" (240 x 62.2 x 2.5 cm)
Edition of 9, AP 4
JB83-2111

45,000



Jonathan Borofsky
Stick Man, 1983
4-color lithograph
52 1/2 x 37 3/4" (133.4 x 95.9 cm)
Edition of 27
JB83-1074

8,500



GEMINI G.E.L. ^{AT} JONI MOISANT WEYL



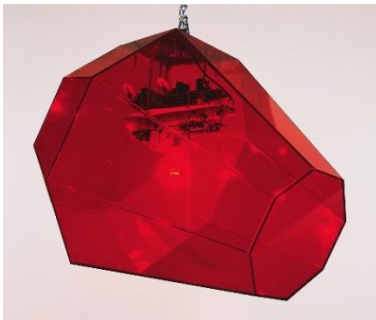
Jonathan Borofsky
People Running, 1982
1-color lithograph
39 1/2 x 76" (100.3 x 193 cm)
Edition of 40, #27
JB82-1050

\$ 14,000
framed



Jonathan Borofsky
I Dreamed I Found A Red Ruby, 1982
2-color lithograph
76 x 39 1/2" (193 x 100.3 cm)
Edition of 27
JB82-1051

15,000



Jonathan Borofsky
I Dreamed I Found A Red Ruby, 1986
Rotating multiple sculpture of red acrylic,
with flashing light and motor
23 x 22 1/2 x 22 1/2" (58.4 x 57.2 x 57.2 cm)
Edition of 25, #22
JB86-2130

12,000



Jonathan Borofsky
Flowers At No. 2984214, 1986
Unique screenprint with handpainting by the artist
48 x 40" (121.9 x 101.6 cm)
Series of 73 unique works (#48)
JB86-130

POR

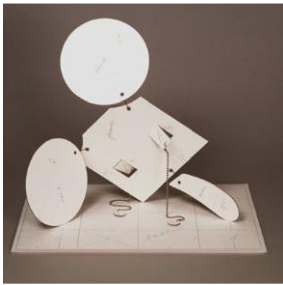


GEMINI G.E.L. ^{AT} JONI MOISANT WEYL



Donald Judd
Untitled, 1971
Stainless steel and acrylic
4 x 23 x 27" (10.2 x 58.4 x 68.6 cm)
Edition of 50, #3
DJ71-2028

POR



Claes Oldenburg
Geometric Mouse - Scale D, 1971
Moveable 3-dimensional object; die-cut laminated
photo offset printed paper
17 1/2 x 14" (44.5 x 35.6 cm)
Unlimited edition
CO71-2011A

750



Claes Oldenburg
Geometric Mouse, Scale E, "Desktop", 2013
Painted aluminum sculpture on painted aluminum
Signed-and-numbered base
6 1/2 x 8 1/4 x 6 1/2" (16.5 x 21 x 16.5 cm)
Edition 50, #50
CO13-2234

18,000



Claes Oldenburg
Profile Airflow - Test Mold, Front End, 1972
Molded polyurethane relief over 1-color silkscreen on
plexiglas, framed in welded aluminum
18 1/2 x 15 5/8 x 4" (47 x 39.7 x 10.2 cm)
Edition of 50, #24
CO72-2009

30,000
framed