



GEMINI G.E.L. ^{AT} JONI MOISANT WEYL

THE VENETIANS

Selections from Five Decades of Gemini G.E.L. Biennale Artists

JUNE 4 – AUGUST 28, 2015

SOPHIE CALLE



THE ADDRESS BOOK 2009

A portfolio of prints: 28 pages, each with text and photographs, in a screenprinted binder;
one etching with gold leaf, one blind embossment and
one 5-color lithograph with collage

Binder: 14 x 15 1/2 x 1 1/2" (35.6 x 39.4 x 3.8 cm)

Each sheet: 15 1/4 x 12 5/8" (38.7 x 32.1 cm)

Edition of 45

SC09-2220

ROBERT GOBER



UNTITLED 2002

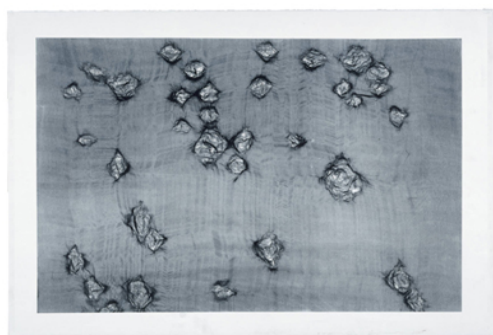
4-color lithograph

51 x 36" (129.5 x 91.4 cm)

Edition of 65, #57

RoGo01-1485

ANN HAMILTON



warp & weft II 2007

1-color lithograph

38 1/2 x 56" (97.8 x 142.2 cm)

Edition of 10, #10

AH07-1560



GEMINI G.E.L. ^{AI} JONI MOISANT WEYL

THE VENETIANS

Selections from Five Decades of Gemini G.E.L. Biennale Artists

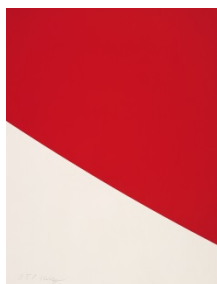
JUNE 4 – AUGUST 28, 2015

JASPER JOHNS



FOUR PANELS FROM UNTITLED 1972-1974
4-part embossed color lithograph
Each panel 40 x 28 1/2" (101.6 x 72.4 cm)
Edition of 45 with 3 Gemini proofs, Gemini II
JJ73-623

ELLSWORTH KELLY



RED CURVE 2000
1-color lithograph
30 x 22 7/8" (76.2 x 58.1 cm)
Edition of 50, #48
EK99-1446

ELIZABETH MURRAY



RED, HOT & BLUE from
ROOFTOPS WITH FLYING GEESE 2003
Multi-colored lithograph/screenprint,
cut, collaged & handpainted by the artist
Framed 28 7/8 x 29 x 5 1/2" (73.3 x 73.6 x 14.0 cm)
Series of 13 unique works
EM03-215 (#1)

BRUCE NAUMAN



UNTITLED (From "Fingers and Holes" series) 1994
Monoprint produced from screen matrix
35 1/4 x 35" (89.5 x 88.9 cm)
Series of 90 unique works
BN94-182 (#20)



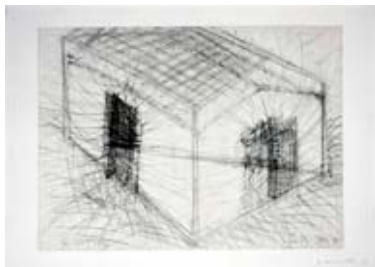
GEMINI G.E.L. ^{AT} JONI MOISANT WEYL

THE VENETIANS

Selections from Five Decades of Gemini G.E.L. Biennale Artists

JUNE 4 – AUGUST 28, 2015

BRUCE NAUMAN - continued



HOUSE DIVIDED 1985
1-color drypoint/etching
28 x 39 1/8" (71.1 x 99.4 cm)
Edition of 23, #7
BN83-3086

ISAMU NOGUCHI



GODDESS 1983
Galvanized steel sculpture
61 x 41 1/4 x 12 3/4" (154.9 x 104.8 x 32.4 cm)
Edition of 18
IN82-2099



LADY MIRROR 1983
Galvanized steel sculpture
58 3/4 x 17 x 17" (149.2 x 43.2 x 43.2 cm)
Edition of 18
IN82-2098

CLAES OLDENBURG



GEOMETRIC MOUSE, SCALE E, "DESKTOP" 2013
Painted aluminum sculpture on painted
aluminum, signed-and-numbered base
6 1/2 x 8 1/4 x 6 1/2" (16.5 x 21.0 x 16.5 cm)
Edition of 50, #48
CO13-2234



GEMINI G.E.L. ^{AT} JONI MOISANT WEYL

THE VENETIANS

Selections from Five Decades of Gemini G.E.L. Biennale Artists

JUNE 4 – AUGUST 28, 2015

ROBERT RAUSCHENBERG



PULL 1974

Offset lithograph and screenprint transferred
to collage of fabric and paper bags

85 x 48" (215.9 x 121.9 cm)

Edition of 29, #11

RR74-690

SUSAN ROTHENBERG



SEVENTEEN HEADS 2003

Cast solid sterling silver

Dimensions vary per piece

Editions of 6

SR02-2189 through SR02-2205

*#17 available only with purchase of complete set

FRANZ WEST



HONEYMOON 2012

Papier-mache, with wire mesh

Approx. 39" diameter x 3/4" depth (99.1 x 19.1 cm)

Series of 30 unique works

FW11-225 (#15)



GEMINI G.E.L. ^{AT} JONI MOISANT WEYL

THE VENETIANS

Selections from Five Decades of Gemini G.E.L. Biennale Artists

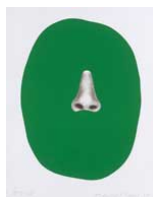
JUNE 4 – AUGUST 28, 2015

On view in our Project Space:

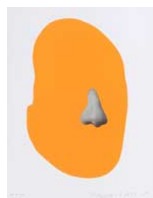
JOHN BALDESSARI



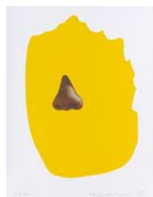
GOD NOSE 2007
Hand-painted cast aluminum
36 x 37 x 6" (91.4 x 94.0 x 15.2 cm)
Edition of 25, #21
JBA07-2219



NOSE/SILHOUETTE: GREEN 2010
1-color lithograph/1-color screenprint
18 x 14" (45.7 x 35.6 cm)
Edition of 50, #28
JBA10-5338



NOSE/SILHOUETTE: ORANGE 2010
1-color lithograph/1-color screenprint
18 x 14" (45.7 x 35.6 cm)
Edition of 50, #28
JBA10-5340



NOSE/SILHOUETTE: YELLOW 2010
4-color lithograph/1-color screenprint
18 x 14" (45.7 x 35.6 cm)
Edition of 50, #28
JBA10-5341

ANN HAMILTON



wreathe 2001
Blind debossment
Signed and numbered on verso
22 3/4 x 30 1/2" (57.8 x 77.5 cm)
Edition of 45, RTP
AH00-3309

On view in our Project Space:



GEMINI G.E.L. ^{AT} JONI MOISANT WEYL

THE VENETIANS

Selections from Five Decades of Gemini G.E.L. Biennale Artists

JUNE 4 – AUGUST 28, 2015

ROBERT RAUSCHENBERG



SPACKLE 1990
3-color lithograph
5 3/4 x 4 1/2" (14.6 x 11.4 cm)
Edition of 250, #77
RR90-1240

ED RUSCHA



MAIN STREET 1990
1-color lithograph
8 1/4 x 10 1/4" (21.0 x 26.0 cm)
Edition of 250, #137
ER90-1244

RICHARD SERRA



REVERSAL III & VII 2014
Hand-applied Paintstik and silica on two sheets of
Handmade paper, signed on verso
Each (overall) 42 x 15" (106.7 x 38.1 cm)
Editions of 50, #26
RS14-4004 & RS14-4008

JOEL SHAPIRO



UP DOWN AROUND (b) 2011
10-color screenprint/lithograph
36 x 24" (91.4 x 61.0 cm)
Edition of 45, #16
JS11-5344